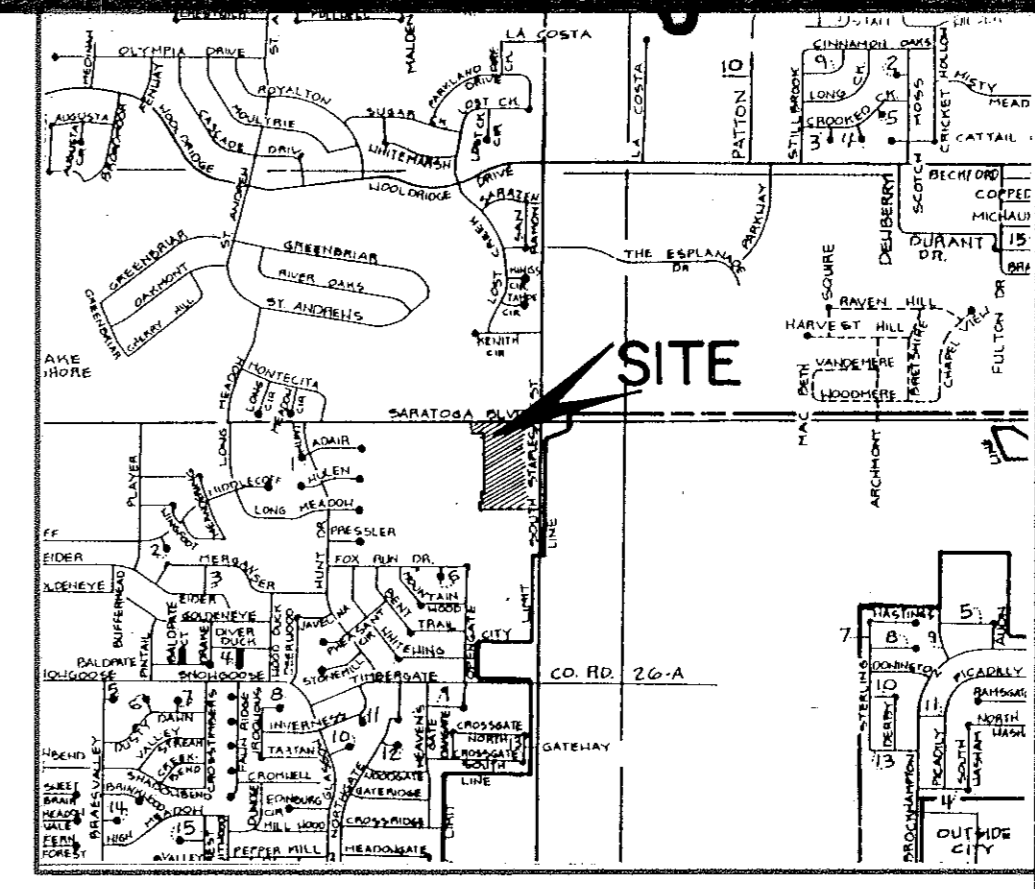
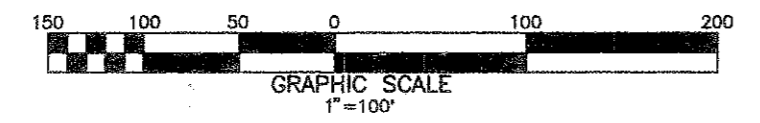
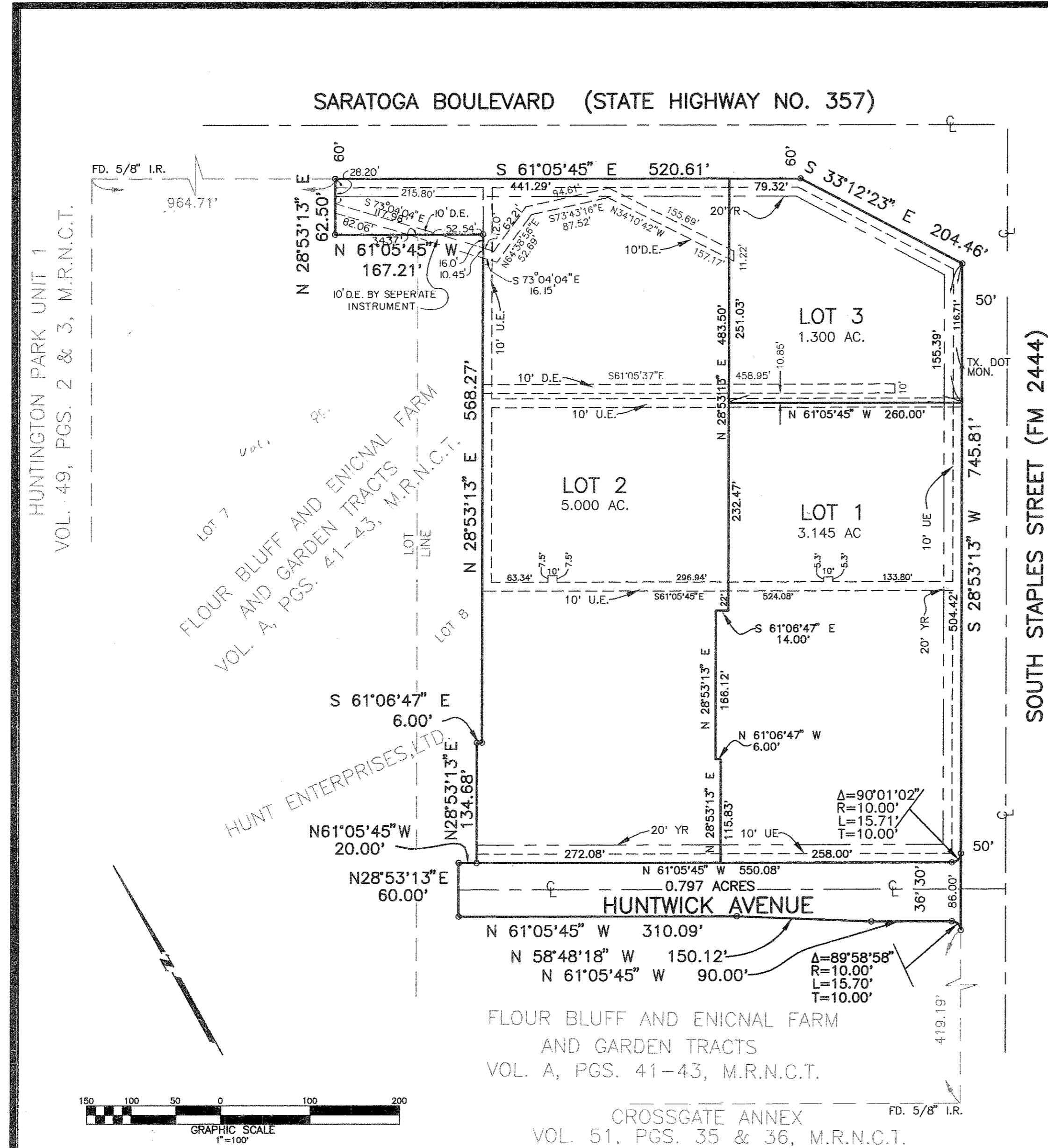


PLAT OF HUNTINGTON PARK UNIT 2 LOTS 1, 2 & 3, BLOCK 1

BEING A 10.242 ACRES OF LAND OUT OF LOTS 7 & 8, SECTION 5, FLOUR BLUFF AND ENICAL FARM AND GARDEN TRACTS, A MAP OF WHICH IS RECORDED IN VOLUME A, PAGES 41 AND 43, MAP RECORDS OF NUECES COUNTY, TEXAS.



- NOTES:
- TOTAL PLATTED AREA CONTAINS 10.242 ACRES OF LAND.
 - 5/8 INCH IRON RODS AT ALL LOT CORNERS, EXCEPT AS SHOWN.
 - THE YARD REQUIREMENT AS DEPICTED, IS A REQUIREMENT OF THE ZONING ORDINANCE AND IS SUBJECT TO CHANGE AS THE ZONING MAY CHANGE.
 - BEARINGS BASED UPON THE SOUTHERLY RIGHT-OF-WAY LINE OF SARATOGA BOULEVARD AS SHOWN ON PLAT OF HUNTINGTON PARK UNIT 1, A MAP OF WHICH IS RECORDED IN VOL. 49, PGS. 1 AND 2, MAP RECORDS OF NUECES COUNTY, TEXAS.
 - NO DRIVEWAY ACCESS BE PERMITTED ACROSS THE FLARE OUT PORTION OF THE INTERSECTION ON LOT 3.
 - EACH LOT HAS INDEPENDENT ACCESS TO THE PUBLIC DRAINAGE SYSTEM. THEREFORE, DRAINAGE ACROSS LOT LINES THROUGH A PRIVATE INTERNAL STORM SYSTEM IS ALLOWED. THE CITY SHALL NOT BE RESPONSIBLE FOR MAINTENANCE OF THE PRIVATE STORM SEWER SYSTEM.



STATE OF TEXAS
COUNTY OF NUECES

WE, HUNT DEVELOPMENT, LTD., A TEXAS LIMITED PARTNERSHIP, HEREBY CERTIFIES THAT WE ARE THE OWNERS OF LOTS 1 AND 3 AS SHOWN ON THE FOREGOING PLAT; THAT WE HAVE HAD SAID LANDS SURVEYED AND SUBDIVIDED AS SHOWN; THAT STREETS SHOWN ARE DEDICATED TO THE PUBLIC USE FOREVER; THAT EASEMENTS AS SHOWN ARE DEDICATED TO THE PUBLIC USE FOR THE INSTALLATION, OPERATION AND USE OF PUBLIC UTILITIES; AND THAT THIS MAP WAS MADE FOR THE PURPOSE OF DESCRIPTION AND DEDICATION.

THIS THE 1st DAY OF February, 1995.

HUNT MANAGEMENT, INC., GENERAL PARTNER
Hilton A. Hunt
BY: HILTON A. HUNT, PRESIDENT

STATE OF TEXAS
COUNTY OF NUECES

THIS INSTRUMENT WAS ACKNOWLEDGED BEFORE ME BY HILTON A HUNT, PRESIDENT OF HUNT MANAGEMENT, INC., GENERAL PARTNER OF HUNT DEVELOPMENT, LTD., A TEXAS LIMITED PARTNERSHIP, ON BEHALF OF SAID LIMITED PARTNERSHIP.

THIS THE 1st DAY OF Feb., 1995.

Beatrice Silva
NOTARY PUBLIC IN AND FOR THE STATE OF TEXAS

BEATRICE SILVA
Notary Public
STATE OF TEXAS
My Comm. Exp. Dec. 16, 1997

STATE OF IDAHO
COUNTY OF ADA

WE, ALBERTSON'S, INC., A DELAWARE CORPORATION, HEREBY CERTIFY THAT WE ARE THE OWNERS OF LOT 2 AS SHOWN ON THE FOREGOING PLAT; THAT IT HAS HAD SAID LANDS SURVEYED AND SUBDIVIDED AS SHOWN; THAT STREETS SHOWN ARE DEDICATED TO THE PUBLIC USE FOREVER; THAT EASEMENTS AS SHOWN ARE DEDICATED TO THE PUBLIC USE FOR THE INSTALLATION, OPERATION AND USE OF PUBLIC UTILITIES; AND THAT THIS MAP WAS MADE FOR THE PURPOSE OF DESCRIPTION AND DEDICATION.

THIS THE 2nd DAY OF February, 1995.

ALBERTSON'S, INC.
A DELAWARE CORPORATION
William H. Arnold
BY: WILLIAM H. ARNOLD,
VICE PRESIDENT, REAL ESTATE LAW

STATE OF IDAHO
COUNTY OF ADA

THIS INSTRUMENT WAS ACKNOWLEDGED BEFORE ME BY WILLIAM H. ARNOLD, AS VICE PRESIDENT, REAL ESTATE LAW, OF ALBERTSON'S INC., A DELAWARE CORPORATION, ON BEHALF OF SAID CORPORATION.

THIS THE 2nd DAY OF February, 1995.

Lana Anderson
NOTARY PUBLIC IN AND FOR THE STATE OF IDAHO

STATE OF TEXAS
COUNTY OF NUECES

I, THOMAS L WILLIS JR., REGISTERED PROFESSIONAL LAND SURVEYOR FOR URBAN ENGINEERING, HEREBY CERTIFY THAT THE FOREGOING MAP WAS PREPARED FROM SURVEYS MADE ON THE GROUND UNDER MY DIRECTION AND IS TRUE AND CORRECT; THAT I HAVE BEEN ENGAGED UNDER CONTRACT TO SET ALL LOT AND BLOCK CORNERS AS SHOWN HEREON AND TO COMPLETE SUCH OPERATIONS WITHOUT DELAY.

THIS THE 1st DAY OF February, 1995.

Thomas L. Willis Jr.
THOMAS L WILLIS JR., R.P.L.S.
TEXAS LICENSE NO. 4903

STATE OF TEXAS
COUNTY OF NUECES

THIS FINAL PLAT OF THE HEREIN DESCRIBED PROPERTY WAS APPROVED BY THE DEPARTMENT OF ENGINEERING SERVICES OF THE CITY OF CORPUS CHRISTI, TEXAS.

THIS THE 7th DAY OF February, 1995.

R.H. Shackelford
R.H. SHACKELFORD, P.E.
DIRECTOR OF ENGINEERING SERVICES/CITY ENGINEER

STATE OF TEXAS
COUNTY OF NUECES

THIS FINAL PLAT OF THE HEREIN DESCRIBED PROPERTY WAS APPROVED ON BEHALF OF THE CITY OF CORPUS CHRISTI, TEXAS BY THE ZONING AND PLANNING COMMISSION.

THIS THE 15th DAY OF June, 1994.

Brandol M. Harvey
BRANDOL M. HARVEY
DIRECTOR OF PLANNING

Lamont C. Taylor
LAMONT C. TAYLOR, CHAIRMAN
95-011

STATE OF TEXAS
COUNTY OF NUECES

I, ERNEST BRIONES, CLERK OF THE COUNTY COURT IN AND FOR SAID COUNTY, DO HEREBY CERTIFY THAT THE FOREGOING INSTRUMENT DATED THE 1st DAY OF February, 1995, WITH ITS CERTIFICATE OF AUTHENTICATION WAS FILED FOR RECORD IN MY OFFICE THE 8 DAY OF February, 1995, AT 3:29 O'CLOCK P.M. AND DULY RECORDED THE 9 DAY OF February, 1995, AT 9:30 O'CLOCK A.M., IN SAID COUNTY IN VOLUME 56, PAGE 146, MAP RECORDS.

WITNESS MY HAND AND SEAL OF THE COUNTY COURT, IN AND FOR SAID COUNTY, AT OFFICE IN CORPUS CHRISTI, TEXAS, THE DAY AND YEAR LAST WRITTEN.

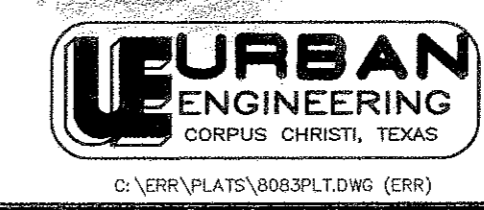
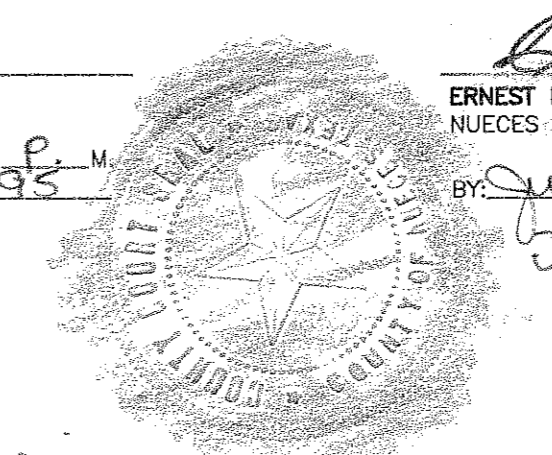
NO. 949599
FILED FOR RECORD

AT 3:29 O'CLOCK P.M.
February 8, 1995

ERNEST BRIONES
CLERK COUNTY COURT
NUECES COUNTY, TEXAS

Ernest Briones
ERNEST BRIONES, COUNTY CLERK
NUECES COUNTY, TEXAS

BY: *Juanita Ramirez*
JUANITA RAMIREZ
DEPUTY



DATE: 2-1-95
SCALE: 1"=100'
JOB NO. 08083.94.03

E003P.L1 Wed Feb 1 16:25:19 1995 URBAN/ERR HP DesignJet 6000! HP-GL/2 ADI 4.2 plotter driver by Hewlett-Packard 1.0