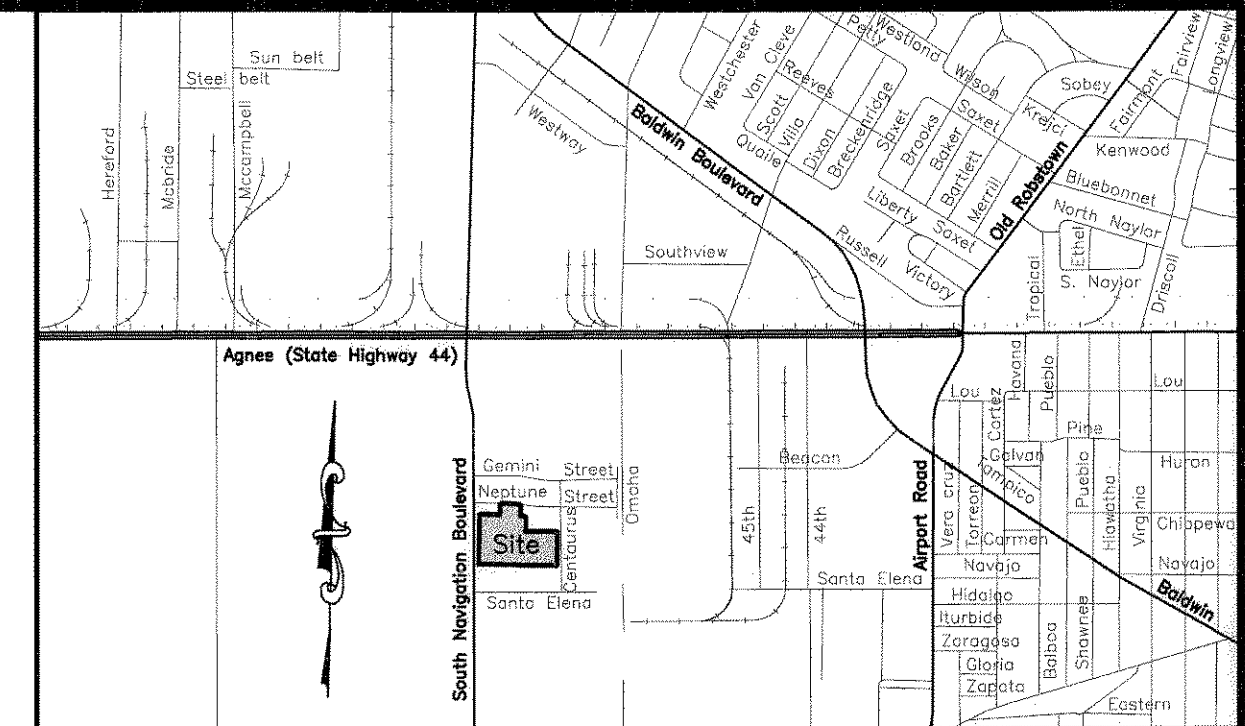


Notes:

- 1.) Total platted area contains 9.061 acres of land, including street dedication.
- 2.) The receiving waters for storm water runoff is the Oso Creek Basin. The TCEQ has not classified the aquatic life use for the Oso Creek, but it is recognized as an environmentally sensitive area. The Oso Creek flows directly into the Oso Bay. The TCEQ has classified the aquatic life use for Oso Bay as "exceptional" and "oyster waters" and categorized the receiving water as "contact recreation" use.
- 3.) Bearings are based on the recorded plat of Starcrest Place Unit 2, Block 4, Lots 16A and 16B, a map of which is recorded in Volume 46, Page 74, Map Records of Nueces County, Texas.
- 4.) By graphic plotting only, this property is in Zone "C" on Flood Insurance Rate Map, Community Panel No. 485464 0165 C, City of Corpus Christi, Texas, which bears an effective date of July 18, 1985 and is not in a Special Flood Hazard Area.



LOCATION MAP N.T.S.

**Plat of
Starcrest Place Unit 2
Block 4, Lots 16C, 16D and 16E**

9.061 acres being a replat of Lot 16A, Block 4, Starcrest Place Unit 2, a map of which is recorded in Volume 66, Pages 2-3, Map Records of Nueces County, Texas and Lots 5, 6, 7 and 8, Block 4, Starcrest Place - Unit No. 1, a map of which is recorded in Volume 38, Page 13, Map Records of Nueces County, Texas.

State of Texas
County of Nueces

I, Juan J. Salazar, a Registered Professional Land Surveyor for Urban Engineering, have prepared the foregoing map from a survey made on the ground under my direction and is true and correct to the best of my knowledge, information and belief; I have been engaged under contract to set all Lot and Block corners as shown herein and to complete such operations with due and reasonable diligence consistent with sound professional practice.

This the 29th day of September, 2008
Juan J. Salazar
 Juan J. Salazar, R.P.L.S.
 Texas License No. 4909



State of Texas
County of Nueces

This final plat of the herein described property was approved by the Department of Development Services of the City of Corpus Christi, Texas.

This the 13th day of October, 2008
Juan Perales, Jr.
 Juan Perales, Jr., P.E.
 Development Services Engineer

State of Texas
County of Nueces

This final plat of the herein described property was approved on behalf of the City of Corpus Christi, Texas by the Planning Commission.

This the 3rd day of SEPTEMBER, 2008
Faryce Goode-Macon Rudy Garza
 Faryce Goode-Macon Rudy Garza, Chairman
 Secretary 0908088-NP070 (08-21000018)

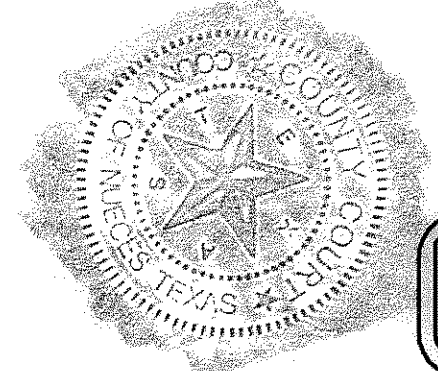
State of Texas
County of Nueces

I, Diana T. Barrera, Clerk of the County Court in and for said County, do hereby certify that the foregoing instrument dated the 7th day of October, 2008, with its certificate of authentication was filed for record in my office the 14 day of October, 2008. At 3:13 O'clock P. M., and duly recorded the 14 day of October, 2008, at 3:13 O'clock P. M., in said County in Volume 67, Page 218 & 219, Map Records.

Witness my hand and seal of the County Court, in and for said County, at office in Corpus Christi, Texas, the day and year last written.

No. 2008045883
 Filed for Record
 at 3:13 O'clock P. M.
October 14, 2008

Diana T. Barrera
 Diana T. Barrera, County Clerk
 Nueces County, Texas
 By: Norma Handy
 Deputy
 NORMA HANDY



URBAN ENGINEERING
 2725 SWANTNER, CORPUS CHRISTI, TEXAS 78404
 (361)854-3101 Fax: (361)854-8001

DATE: August 15, 2008
 SCALE: 1"=60'
 JOB NO.: 32258.A8.00
 SHEET: 1 of 2
 DRAWN BY: XG

State of Texas
County of Nueces

SOUTHVIEW CORPORATION, a Texas Corporation, hereby certifies that it is the owner of the lands embraced within the boundaries of Lot 16A as shown on the foregoing plat; that it has had said lands surveyed and subdivided as shown; that easements as shown are dedicated to the public use for the installation, operation and use of public utilities; and that this map was made for the purpose of description and dedication.

This the 7th day of October, 2008

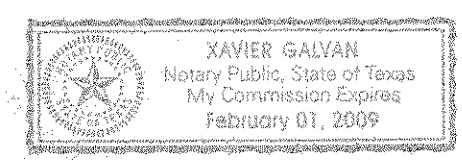
By: SOUTHVIEW CORPORATION, a Texas Corporation
Michael Yankee
 MICHAEL YANKEE, President

State of Texas
County of Nueces

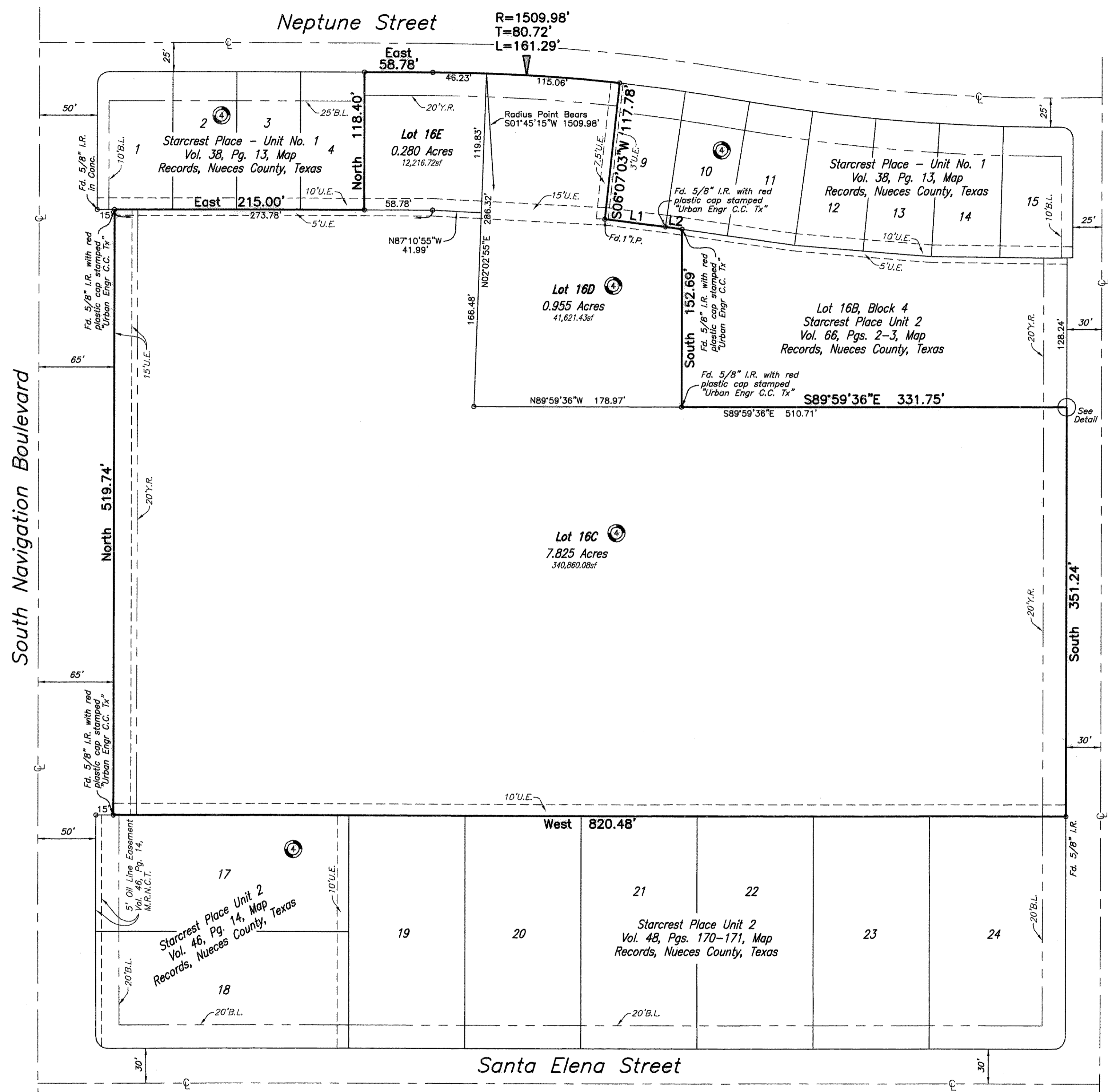
This instrument was acknowledged before me by MICHAEL YANKEE, as President of SOUTHVIEW CORPORATION, a Texas Corporation

This the 7th day of October, 2008

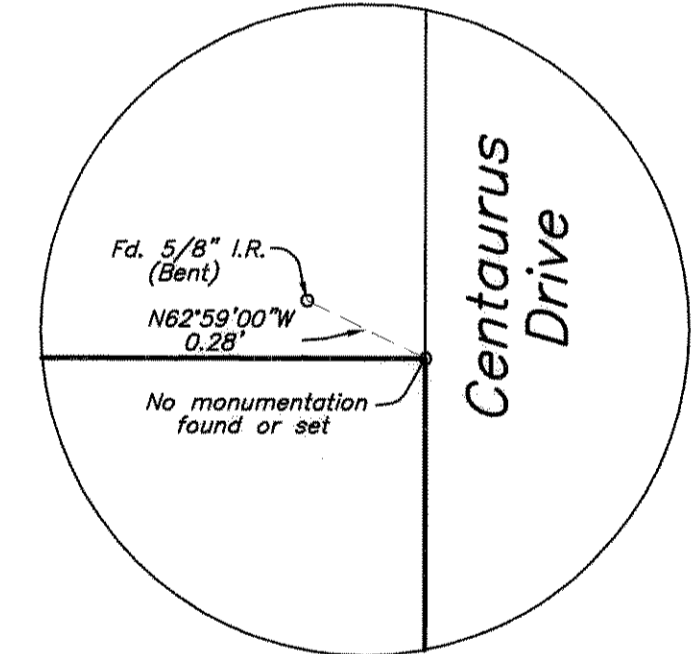
Xavier Galvan
 Notary Public in and for the State of Texas



Vol. 67 Pg. 218

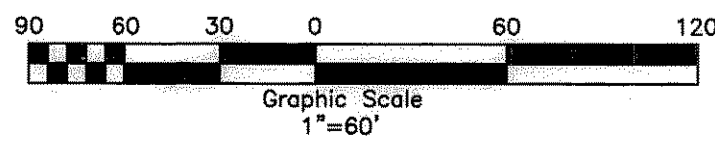


LINE	BEARING	DISTANCE
L1	S82°56'57"E	52.62'
L2	S82°01'09"E	14.44'



Plat of
Starcrest Place Unit 2
 Block 4, Lots 16C, 16D and 16E

9.061 acres being a replat of Lot 16A, Block 4, Starcrest Place Unit 2, a map of which is recorded in Volume 66, Pages 2-3, Map Records of Nueces County, Texas and Lots 5, 6, 7 and 8, Block 4, Starcrest Place - Unit No. 1, a map of which is recorded in Volume 38, Page 13, Map Records of Nueces County, Texas.



URBAN ENGINEERING
 2725 SWANNEER, CORPUS CHRISTI, TEXAS 78404
 (361)854-3101 Fax: (361)854-6001

DATE: August 15, 2008
 SCALE: 1"=60'
 JOB NO.: 32258.A8.00
 SHEET: 2 of 2
 DRAWN BY: XG