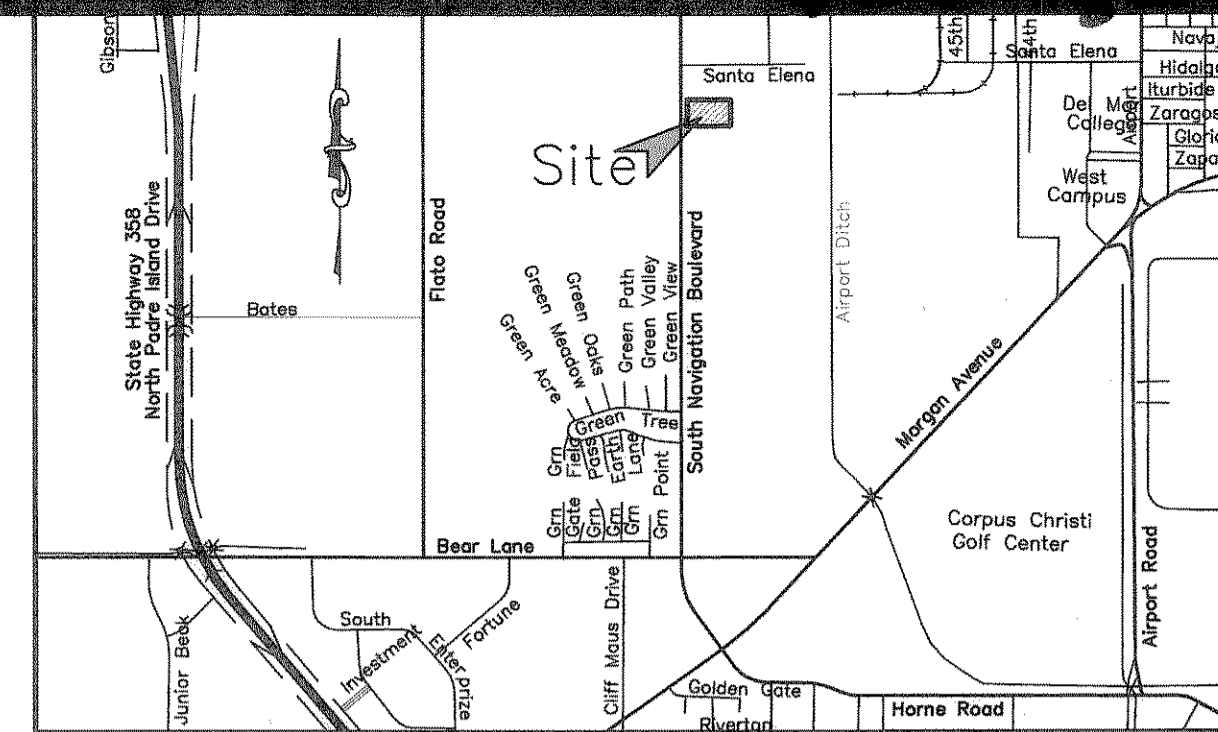


Notes:

- 1.) Total platted area contains 2.905 acres of land.
- 2.) Set 5/8 inch iron rods with red plastic cap stamped "URBAN ENGR C.C. TX" at all Lot corners, except where noted.
- 3.) The receiving water for the storm water runoff from this property is the Oso Creek. The TCEQ has not classified the aquatic life use for the Oso Creek, but it is recognized as an environmentally sensitive area. The Oso Creek flows directly into the Oso Bay. The TCEQ has classified the aquatic life use for the Oso Bay as "exceptional" and "oyster waters" and categorized the receiving water as "contact recreation" use.
- 4.) Bearings are based on the recorded plat of Stabil Tract, Block 1, Lot 1, a map of which is recorded in Volume 63, Page 41, Map Records of Nueces County, Texas.
- 5.) By graphic plotting only, this property is in Zone "C" on Flood Insurance Rate Map, Community Panel No. 485464 0165 C, City of Corpus Christi, Texas, which bears an effective date of July 18, 1985 and is not in a Special Flood Hazard Area.
- 6.) If any lot is developed with residential uses, compliance with the Public Open Space regulations will be required during the building permit phase



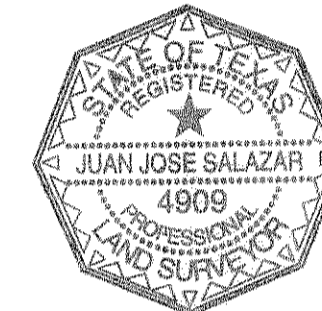
LOCATION MAP N.T.S.

State of Texas  
County of Nueces

I, Juan J. Salazar, a Registered Professional Land Surveyor for Urban Engineering, have prepared the foregoing map from a survey made on the ground under my direction and is true and correct to the best of my knowledge, information and belief; I have been engaged under contract to set all Lot and Block corners as shown herein and to complete such operations with due and reasonable diligence consistent with sound professional practice.

This the 23<sup>rd</sup> day of November 2011

Juan J. Salazar  
Juan J. Salazar, R.L.S.  
Texas License No. 4909



State of Texas  
County of Nueces

This final plat of the herein described property was approved by the Department of Development Services of the City of Corpus Christi, Texas.

This the 23 day of DECEMBER 2011

Armando Gutierrez, Jr.  
Armando Gutierrez, Jr., P.E.  
Development Services Engineer

State of Texas  
County of Nueces

This final plat of the herein described property was approved on behalf of the City of Corpus Christi, Texas by the Planning Commission.

This the 2<sup>ND</sup> day of February 2011

Miguel S. Saldaña      Rudy Garza  
Miguel S. Saldaña, A.I.C.P.      Rudy Garza, Chairman  
Secretary

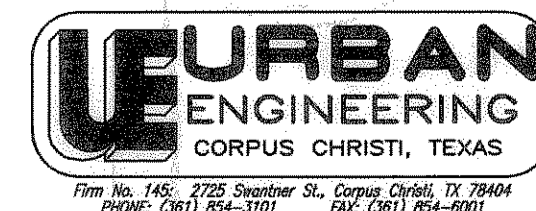
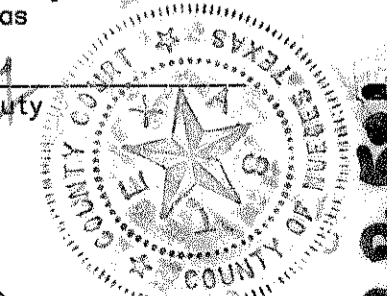
State of Texas  
County of Nueces

I, Diana T. Barrera, Clerk of the County Court in and for said County, do hereby certify that the foregoing instrument dated the 23<sup>rd</sup> day of November, 2011, with its certificate of authentication was filed for record in my office the 27<sup>th</sup> day of December, 2011, at 2:13 O'clock P.M., and duly recorded the 27<sup>th</sup> day of December, 2011, at 2:13 O'clock P.M., in said County in Volume 67, Page 581 & 592, Map Records.

Witness my hand and seal of the County Court, in and for said County, at office in Corpus Christi, Texas, the day and year last written.

No. 2011046895  
Filed for Record  
at 2:13 O'clock P.M.  
December 27, 2011

Diana T. Barrera  
Diana T. Barrera, County Clerk  
Nueces County, Texas  
By: Emma Cruz  
EMMA CRUZ, Deputy



DATE: Jan. 14, 2011  
SCALE: 1"=100'  
JOB NO.: 37595.B0.00  
SHEET: 1 of 2  
DRAWN BY: XG

Firm No. 145, 2725 Sweathner St., Corpus Christi, TX 78404  
PHONE: (361) 854-3101 FAX: (361) 854-8001

Plat of  
Stabil Tract  
Block 1, Lot 1R

being a replat of Lot 1, Block 1, Stabil Tract, a map of which is recorded in Volume 63, Page 41, Map Records of Nueces County, Texas and 1.579 acres out of a 9.748 acre tract of land described in Warranty Deed conveyed by Stabil Drill Specialties, recorded in Document No. 2001016819, Official Public Records of Nueces County, Texas; said 9.748 acre tract being a part of the north half of a 19.496 acre tract (also known as Tract 9); said 9.748 acre tract being out of Lot 1, Block 10, J.C. Russell Farm Blocks, a map of which is recorded in Volume 28, Pages 58-59, Map Records of Nueces County, Texas.

State of Louisiana  
Parish of Lafayette

Stabil Drill Specialties, L.L.C., a Louisiana Limited Liability Corporation, hereby certifies that it is the owner of the lands embraced within the boundaries of the foregoing plat; that it has had said lands surveyed and subdivided as shown; that streets shown are dedicated to the public use forever; that easements as shown are dedicated to the public use for the installation, operation and use of public utilities; and that this map was made for the purpose of description and dedication.

This the 11<sup>th</sup> day of October, 2011

By: Stabil Drill Specialties, L.L.C., a Louisiana Limited Liability Corporation

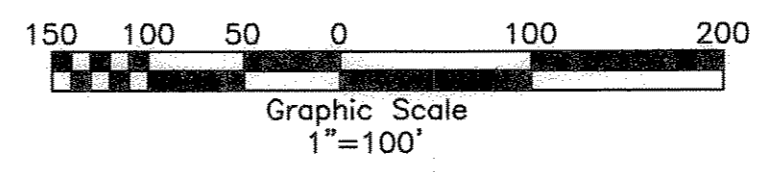
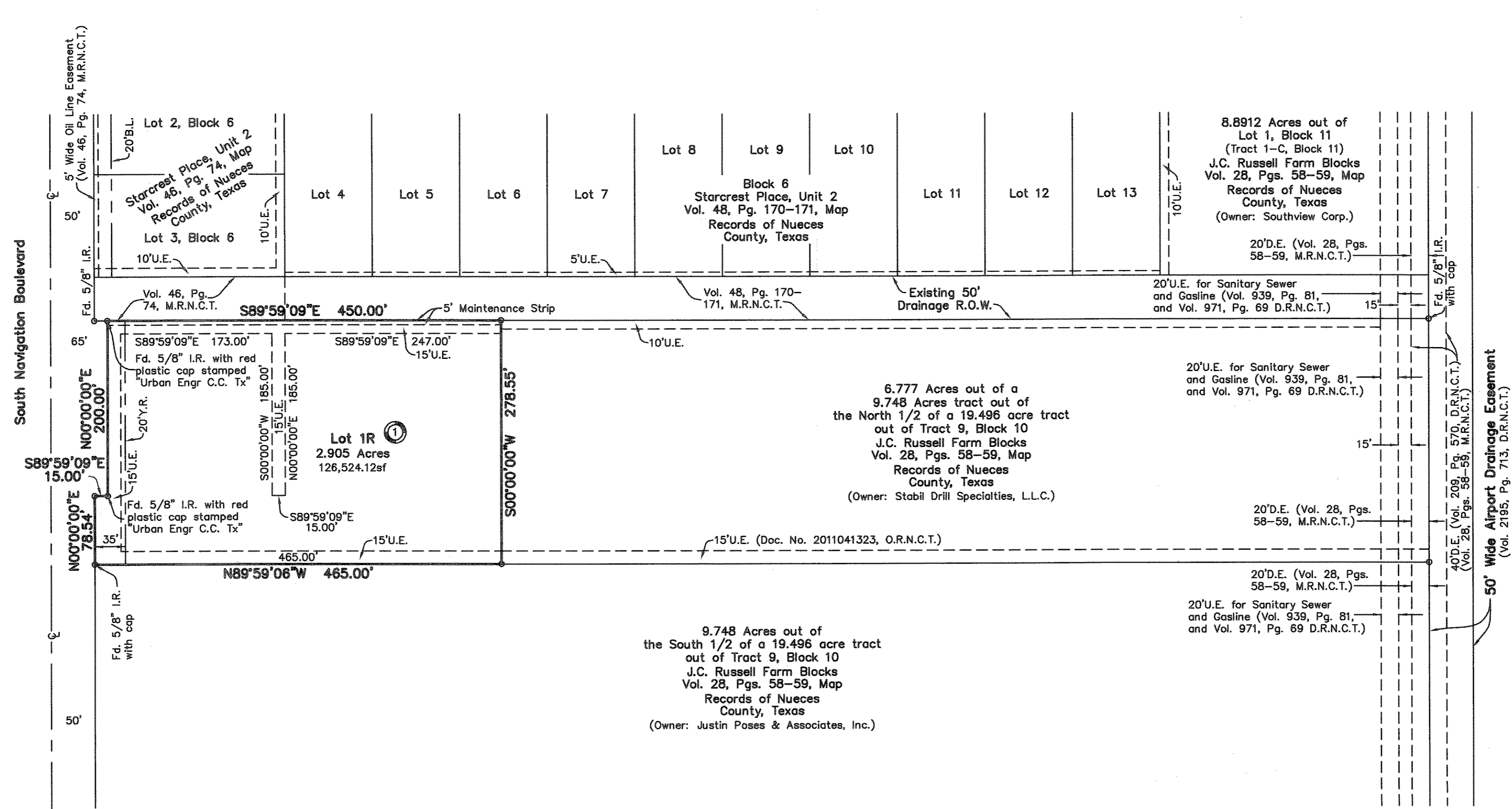
By: Chris Russo  
Chris Russo, Vice-President

State of Louisiana  
Parish of Lafayette

This instrument was acknowledged before me by Chris Russo, as Vice-President of Stabil Drill Specialties, L.L.C., a Louisiana Limited Liability Corporation, on behalf of said corporation.

This the 11<sup>th</sup> day of October, 2011

Nola R. Boudreaux      Notary Public  
Notary Public in and for the State of Louisiana



**Notes:**

- 1.) Total platted area contains 2.905 acres of land.
- 2.) Set 5/8 inch iron rods with red plastic cap stamped "URBAN ENGR C.C. TX" at all Lot corners, except where noted.
- 3.) The receiving water for the storm water runoff from this property is the Oso Creek. The TCEQ has not classified the aquatic life use for the Oso Creek, but it is recognized as an environmentally sensitive area. The Oso Creek flows directly into the Oso Bay. The TCEQ has classified the aquatic life use for the Oso Bay as "exceptional" and "oyster waters" and categorized the receiving water as "contact recreation" use.
- 4.) Bearings are based on the recorded plat of Stabil Tract, Block 1, Lot 1, a map of which is recorded in Volume 63, Page 41, Map Records of Nueces County, Texas.
- 5.) By graphic plotting only, this property is in Zone "C" on Flood Insurance Rate Map, Community Panel No. 485464 0165 C, City of Corpus Christi, Texas, which bears an effective date of July 18, 1985 and is not in a Special Flood Hazard Area.
- 6.) If any lot is developed with residential uses, compliance with the Public Open Space regulations will be required during the building permit phase

*Plat of*  
**Stabil Tract**  
**Block 1, Lot 1R**

being a replat of Lot 1, Block 1, Stabil Tract, a map of which is recorded in Volume 63, Page 41, Map Records of Nueces County, Texas and 1.579 acres out of a 9.748 acre tract of land described in Warranty Deed conveyed by Stabil Drill Specialties, recorded in Document No. 2001016819, Official Public Records of Nueces County, Texas; said 9.748 acre tract being a part of the north half of a 19.496 acre tract (also known as Tract 9); said 9.748 acre tract being out of Lot 1, Block 10, J.C. Russell Farm Blocks, a map of which is recorded in Volume 28, Pages 58-59, Map Records of Nueces County, Texas.

**URBAN ENGINEERING**  
CORPUS CHRISTI, TEXAS  
Firm No. 145, 2725 Swantner St., Corpus Christi, TX 78404  
PHONE: (361) 854-3101 FAX: (361) 854-8001

DATE: Jan. 14, 2011  
SCALE: 1"=100'  
JOB NO.: 37595.B0.00  
SHEET: 2 of 2  
DRAWN BY: XG

VOL 67 Pg 582