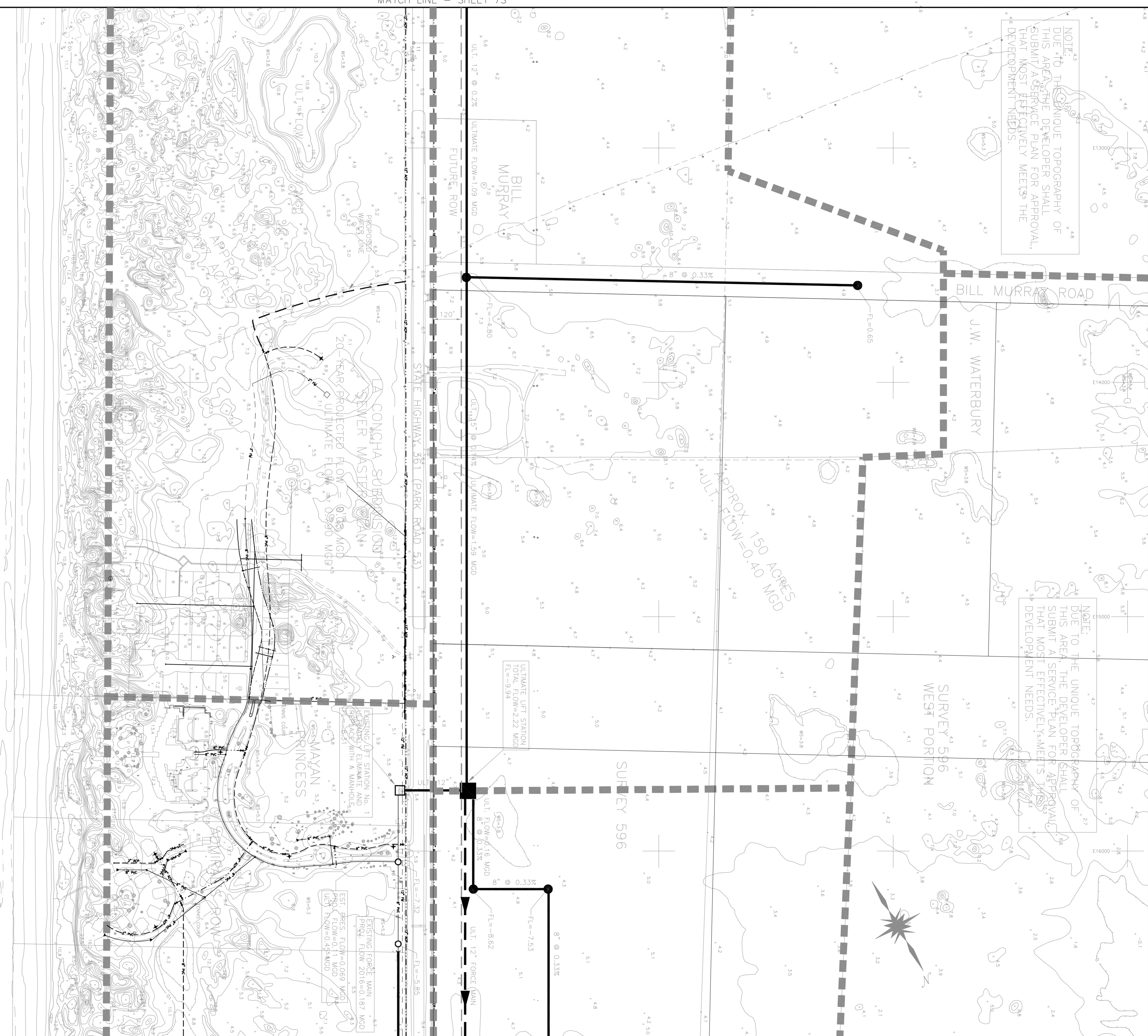


NOTE:  
DUE TO THE UNIQUE TOPOGRAPHY OF THIS AREA, THE DEVELOPER SHALL SUBMIT A SERVICE PLAN FOR APPROVAL THAT MOST EFFECTIVELY MEETS THE DEVELOPMENT NEEDS.

NOTE:  
DUE TO THE UNIQUE TOPOGRAPHY OF THIS AREA, THE DEVELOPER SHALL SUBMIT A SERVICE PLAN FOR APPROVAL THAT MOST EFFECTIVELY MEETS THE DEVELOPMENT NEEDS.



MATCH LINE - SHEET 75

MATCH LINE - SHEET 35

GULF OF MEXICO

© 1997 by Urban Engineering, REV. APRIL, 2002

**URBAN ENGINEERING**  
CORPUS CHRISTI, TEXAS  
P.O. BOX 6355, CORPUS CHRISTI, TEXAS 78466-6355  
PHONE: (361) 854-3101 FAX: (361) 854-6001

**LEGEND**

WATER  
AC PIPE  
CAST IRON PIPE  
ADVANCED PIPE

SEWER  
CLAY PIPE  
GLASS BLOCK  
CONCRETE  
LINED  
MANHOLE  
CLEANOUT  
LIFT STATION

**NUECES COUNTY WCID #4**

WATER AND SEWER MASTER PLAN  
PORT ARANSAS, TEXAS

JOB NO. 9872.95.07

KEY MAP

GRAPHIC SCALE  
1" = 200'

ADOPTED: AUGUST 19, 1997

C:\9872\9807\SHEETS

SHEET 55 OF 21