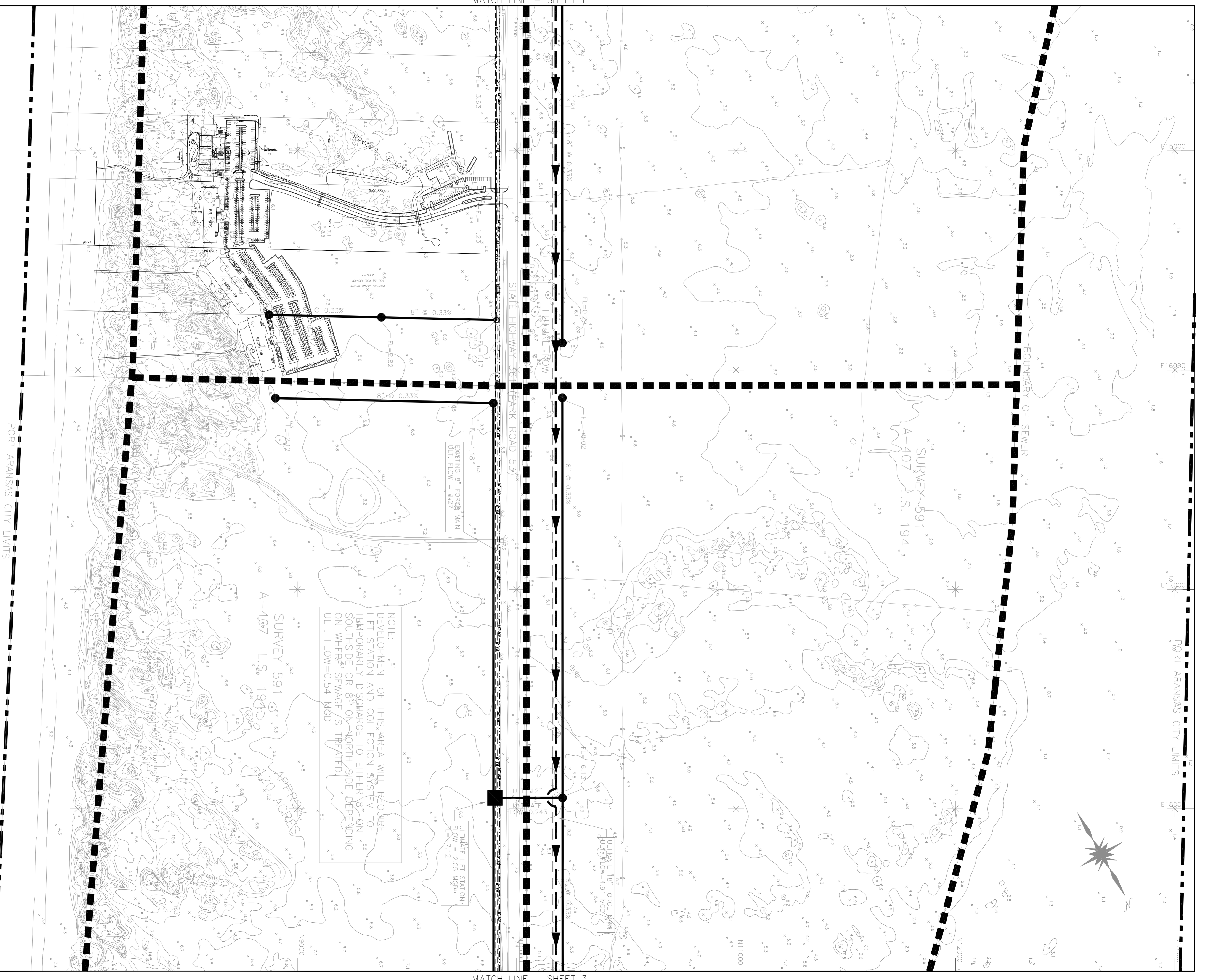


MATCH LINE - SHEET 1



NOTE:
 DEVELOPMENT OF THIS AREA WILL REQUIRE
 LIFT STATION AND COLLECTION SYSTEM TO
 TEMPORARILY DISCHARGE TO EITHER S-ON
 SOUTHSIDE OR S-ON-NORTH SIDE, DEPENDING
 ON WHERE SEWAGE IS TREATED.
 ULT. FLOW=0.54 MGD

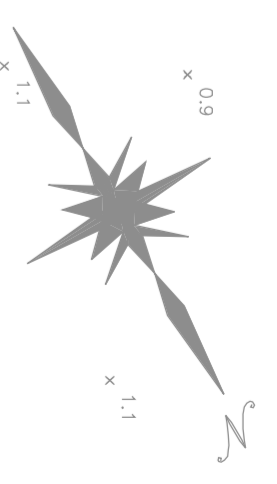
ULTIMATE LIFT STATION
 FLOW = 2.05 MGD @
 ULT. FLOW=1.712

ULTIMATE 18" FORCE MAIN
 FLOW=4.91 MGD @
 ULT. FLOW=5.351

GULF OF MEXICO

PORT ARANSAS CITY LIMITS

PORT ARANSAS CITY LIMITS



N7000

URBAN ENGINEERING
 CORPUS CHRISTI, TEXAS
 P.O. BOX 6355, CORPUS CHRISTI, TEXAS 78466-6355
 PHONE: (361) 854-3101 FAX: (361) 854-6001

LEGEND

WATER	SEWER
AC PIPE	CLAY PIPE
CAST IRON PIPE	CONCRETE MAIN
ADVANCED PIPE	INSULATION
	MANHOLE
	CLEANOUT
	LIFT STATION

NUECES COUNTY WCID #4
 WATER AND SEWER MASTER PLAN
 PORT ARANSAS, TEXAS

ADOPTED: AUGUST 19, 1997

GRAPHIC SCALE
 1"=200'

KEY MAP

SHEET 2 OF 21

© 1997 by Urban Engineering, REV. APRIL, 2002