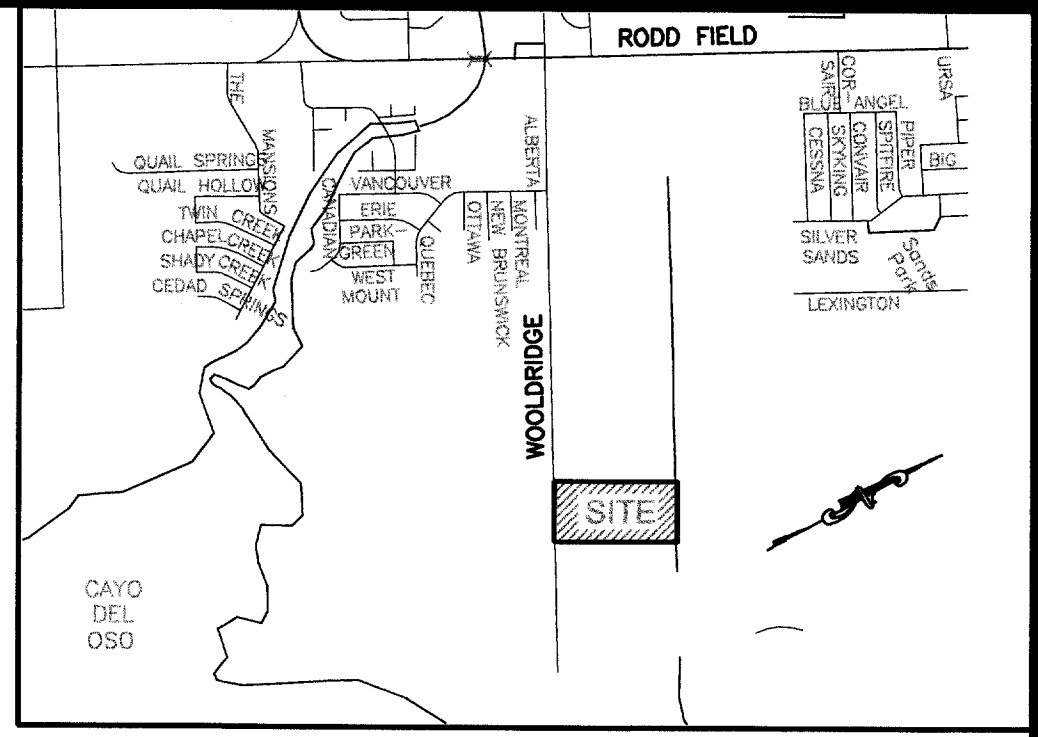
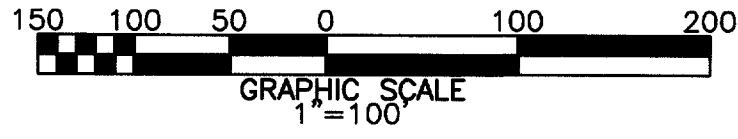
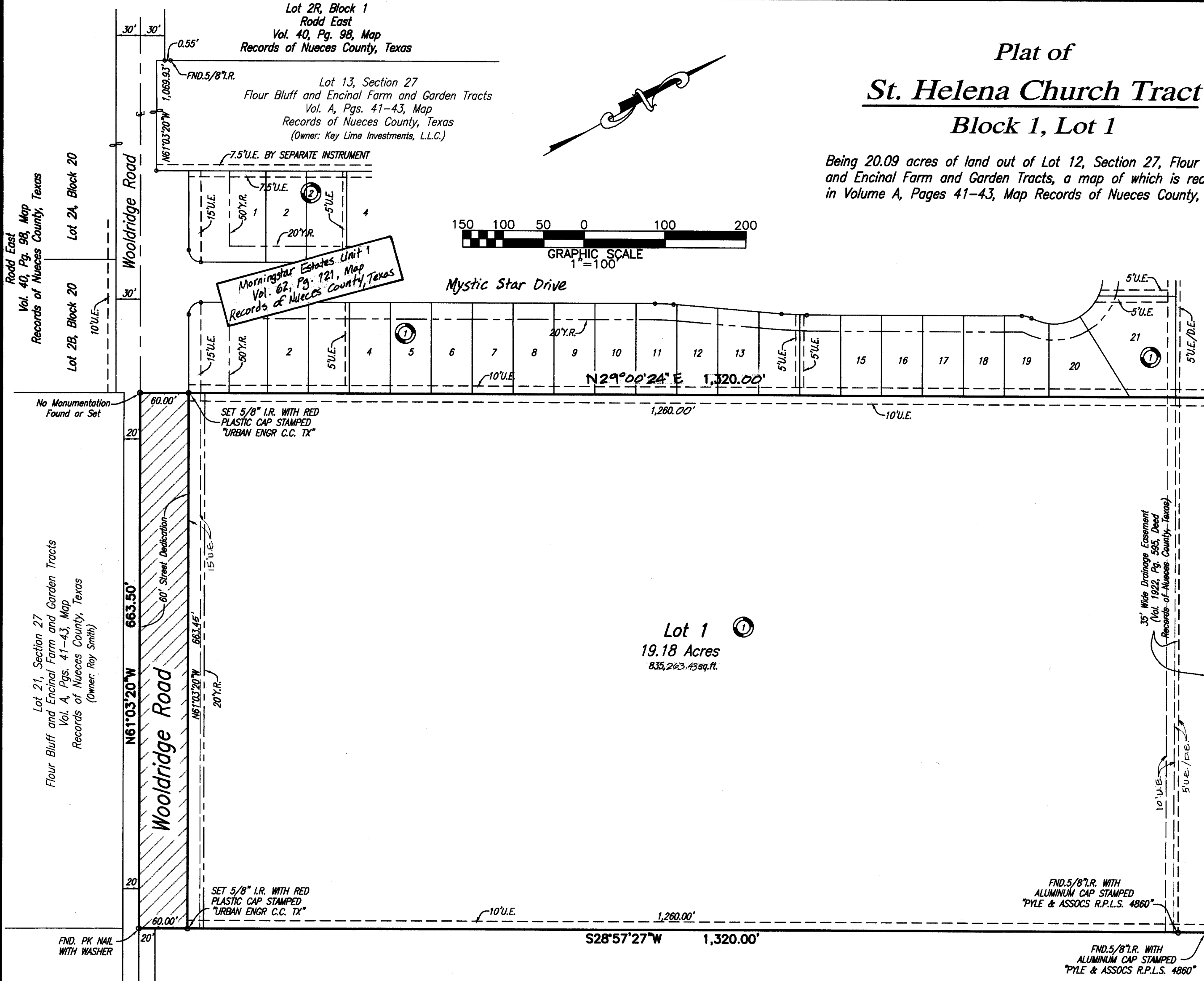


# Plat of St. Helena Church Tract Block 1, Lot 1

Being 20.09 acres of land out of Lot 12, Section 27, Flour Bluff and Encinal Farm and Garden Tracts, a map of which is recorded in Volume A, Pages 41-43, Map Records of Nueces County, Texas.



**Lot 1**  
19.18 Acres  
835,263.43 sq. ft.

State of Texas  
County of Nueces

I, Juan J. Salazar, a Registered Professional Land Surveyor for Urban Engineering, have prepared the foregoing map from a survey made on the ground under my direction and is true and correct to the best of my knowledge, information and belief; I have been engaged under contract to set all Lot and Block corners as shown hereon and to complete such operations with due and reasonable diligence consistent with sound professional practice.

This the 23<sup>rd</sup> day of April, 2003

Juan J. Salazar  
Juan J. Salazar, R.P.L.S.  
Texas License No. 4909



State of Texas  
County of Nueces

This final plat of the herein described property was approved by the Department of Engineering Services of the City of Corpus Christi, Texas.

This the 22<sup>nd</sup> day of May, 2003

Angel B. Escobar, P.E.  
Angel B. Escobar, P.E.  
Director of Engineering Services

State of Texas  
County of Nueces

This final plat of the herein described property was approved on behalf of the City of Corpus Christi, Texas by the Planning Commission.

This the 20<sup>th</sup> day of June, 2001

Michael N. Gunring      David Berlanga Sr.  
Michael N. Gunring      David Berlanga, Sr./Chairman  
Secretary      03-049

State of Texas  
County of Nueces

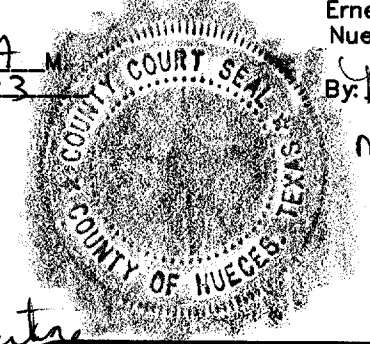
I, Ernest Briones, Clerk of the County Court in and for said County, do hereby certify that the foregoing instrument dated the 22 day of April, 2003, with its certificate of authentication was filed for record in my office the 29 day of May, 2003, AT 10:49 O'clock A.M., and duly recorded the 29 day of May, 2003, at 10:49 O'clock A.M., in said County in Volume 662, Page 143, Map Records.

Witness my hand and seal of the County Court, in and for said County, at office in Corpus Christi, Texas, the day and year last written.

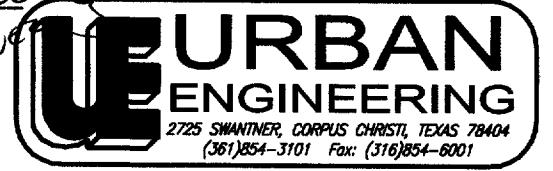
No. 2003027211  
Filed for Record  
at 10:49 O'clock A.M.  
May 29, 2003

Mary Louise Martinez  
Deputy  
MARY LOUISE MARTINEZ

Ernest Briones  
Clerk County Court  
Nueces County, Texas



By: Mary Louise Martinez  
Deputy  
MARY LOUISE MARTINEZ



DATE: APR. 17, 2003  
SCALE: 1"= 100'  
JOB NO. 37536.00.01  
SHEET 1 OF 1

### Notes:

- Total platted area contains 20.09 acres of land. (Includes Street Dedication)
- The receiving waters for storm water from this property is the Oso Bay. The receiving waters are not classified by the TCEQ as having "Exceptional" aquatic life.
- Bearings are based on the centerline of Woodridge Road, same being the southwest boundary of this plat as monumented on the ground and shown as North 61°03'20" West on the recorded plat of the Forum Mall, a map of which is recorded in Volume 53, Page 115, Map Records of Nueces County, Texas.
- By graphic plotting only, this property is in Zone "C" on Flood Insurance Rate Map, Community Panel No. 485464 0315 D, City of Corpus Christi, Texas, which bears an effective date of August 3, 1989 and is not in a Special Flood Hazard Area.

State of Texas  
County of Nueces  
The Most Reverend Edmond Carmody, D.D., Bishop Carmody of Diocese of Corpus Christi, a Corporate Sole, and his successors in office, hereby certifies that we are the owners of the lands embraced within the boundaries of the foregoing plat; that we have had said lands surveyed and subdivided as shown; that streets shown are dedicated to the public use forever; that easements as shown are dedicated to the public use for the installation, operation and use of public utilities; and that this map was made for the purpose of description and dedication.

This the 22<sup>nd</sup> day of April, 2003

Edmond Carmody  
The Most Reverend Edmond Carmody, D.D.,  
Bishop Carmody of Diocese of Corpus Christi,  
a Corporate Sole, and his successors in office

State of Texas  
County of Nueces

This instrument was acknowledged before me by the The Most Reverend Edmond Carmody, D.D., Bishop Carmody of Diocese of Corpus Christi, a Corporate Sole, and his successors in office.

This the 22<sup>nd</sup> day of April, 2003

Mary L Sedberry  
Notary Public in and for the State of Texas

