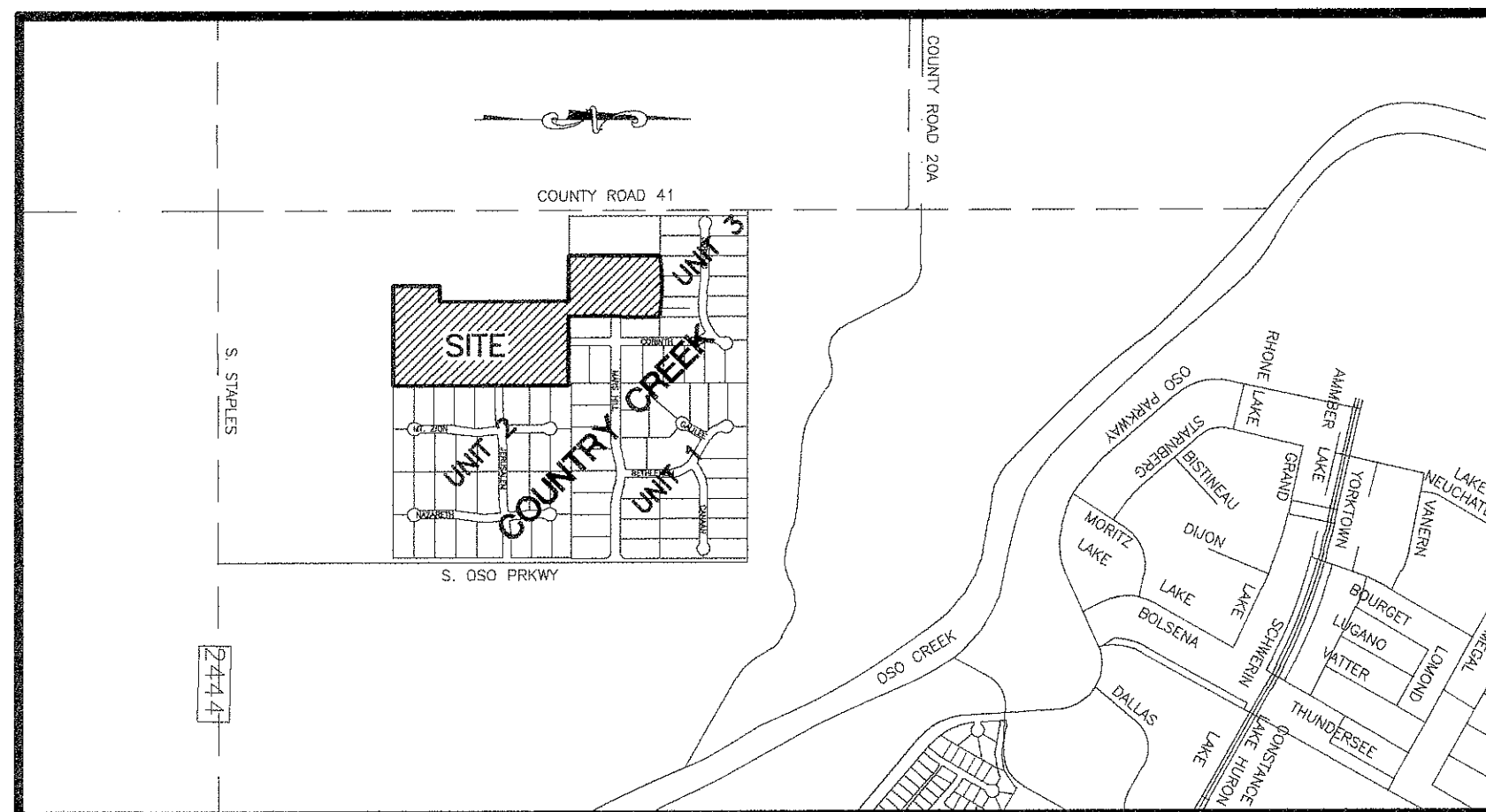


PLAT OF
COUNTRY CREEK UNIT 4

BEING 27.15 ACRES MORE OR LESS OUT OF SECTION A AND SECTION 31, LAURELES FARM TRACTS, A MAP OF WHICH IS RECORDED IN VOLUME 3, PAGE 15, MAP RECORDS OF NUECES COUNTY, TEXAS, ALSO BEING OUT OF LANDS DESCRIBED IN DOCUMENT NO. 839128 OFFICIAL PUBLIC RECORDS OF REAL PROPERTY OF NUECES COUNTY, TEXAS.



LOCATION MAP N.T.S.

NOTES:

- 1.) TOTAL PLATTED AREA CONTAINS 27.15 ACRES OF LAND.
- 2.) THE YARD REQUIREMENT AS DEPICTED, IS A REQUIREMENT OF THE ZONING ORDINANCE AND IS SUBJECT TO CHANGE AS THE ZONING MAY CHANGE.
- 3.) SET 5/8 INCH IRON RODS WITH RED PLASTIC CAP STAMPED "URBAN ENGR C.C. TX" AT ALL LOT CORNERS, EXCEPT WHERE NOTED.
- 4.) THE RECEIVING WATERS FOR STORM WATER FROM THIS PROPERTY IS OSO CREEK. THE RECEIVING WATERS ARE NOT CLASSIFIED BY THE TNRCC AS HAVING "EXCEPTIONAL" AQUATIC LIFE.
- 5.) BEARINGS ARE BASED ON THE RECORDED PLAT OF COUNTRY CREEK UNIT 3, A MAP OF WHICH IS RECORDED IN VOLUME 57, PAGES 74-75, MAP RECORDS OF NUECES COUNTY, TEXAS.

STATE OF TEXAS
COUNTY OF NUECES

COUNTRY CREEK PARTNERS, INC., A TEXAS CORPORATION, HEREBY CERTIFIES THAT IT IS THE OWNER OF THE LANDS EMBRACED WITHIN THE BOUNDARIES OF THE FOREGOING PLAT; THAT IT HAS HAD SAID LANDS SURVEYED AND SUBDIVIDED AS SHOWN; THAT STREETS SHOWN ARE DEDICATED TO THE PUBLIC USE FOREVER; THAT EASEMENTS AS SHOWN ARE DEDICATED TO THE PUBLIC USE FOR THE INSTALLATION, OPERATION AND USE OF PUBLIC UTILITIES; AND THAT THIS MAP WAS MADE FOR THE PURPOSE OF DESCRIPTION AND DEDICATION.

THIS THE 28th DAY OF April, 2000

COUNTRY CREEK PARTNERS, INC.

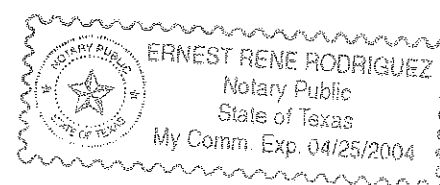
Gene Graham
BY: GENE GRAHAM, PRESIDENT

STATE OF TEXAS
COUNTY OF NUECES

THIS INSTRUMENT WAS ACKNOWLEDGED BEFORE ME BY GENE GRAHAM, AS PRESIDENT OF COUNTRY CREEK PARTNERS, INC., A TEXAS CORPORATION, ON BEHALF OF SAID CORPORATION.

THIS THE 28th DAY OF April, 2000

Ernest Rene Rodriguez
NOTARY PUBLIC IN AND FOR THE STATE OF TEXAS



STATE OF TEXAS
COUNTY OF NUECES

THIS FINAL PLAT APPROVED BY THE CORPUS CHRISTI NUECES COUNTY HEALTH UNIT. ANY PRIVATE WATER SUPPLY AND/OR SEWERAGE SYSTEM SHALL BE APPROVED BY THE CORPUS CHRISTI-NUECES COUNTY HEALTH DEPARTMENT PRIOR TO INSTALLATION.

THIS THE 17th DAY OF September, 1999

Jim McFarland
JIM MCFARLAND, MANAGER
PUBLIC HEALTH ENGINEER
CORPUS CHRISTI, NUECES COUNTY, TEXAS

STATE OF TEXAS
COUNTY OF NUECES

I, JUAN J. SALAZAR, REGISTERED PROFESSIONAL LAND SURVEYOR FOR URBAN ENGINEERING, HAVE PREPARED THE FOREGOING MAP FROM A SURVEY MADE ON THE GROUND UNDER MY DIRECTION AND IS TRUE AND CORRECT TO THE BEST OF MY KNOWLEDGE, INFORMATION AND BELIEF; I HAVE BEEN ENGAGED UNDER CONTRACT TO SET ALL LOT AND BLOCK CORNERS AS SHOWN HEREON AND TO COMPLETE SUCH OPERATIONS WITH DUE AND REASONABLE DILIGENCE CONSISTENT WITH SOUND PROFESSIONAL PRACTICE.

THIS THE 3rd DAY OF MAY, 2000

Juan J. Salazar
JUAN J. SALAZAR, R.P.L.S.
TEXAS LICENSE NO. 4909



STATE OF TEXAS
COUNTY OF NUECES

THIS FINAL PLAT OF THE HEREIN DESCRIBED PROPERTY WAS APPROVED BY THE DEPARTMENT OF ENGINEERING SERVICES OF THE CITY OF CORPUS CHRISTI, TEXAS.

THIS THE 9th DAY OF May, 2000

Angel Escobar, P.E.
ANGEL ESCOBAR, P.E.
DIRECTOR OF ENGINEERING SERVICES

STATE OF TEXAS
COUNTY OF NUECES

THIS FINAL PLAT OF THE HEREIN DESCRIBED PROPERTY WAS APPROVED ON BEHALF OF THE CITY OF CORPUS CHRISTI, TEXAS BY THE PLANNING COMMISSION.

THIS THE 15th DAY OF September, 1999

Michael N. Gunning Ron Guzman
MICHAEL N. GUNNING RON GUZMAN, CHAIRMAN
SECRETARY

00-047

STATE OF TEXAS
COUNTY OF NUECES

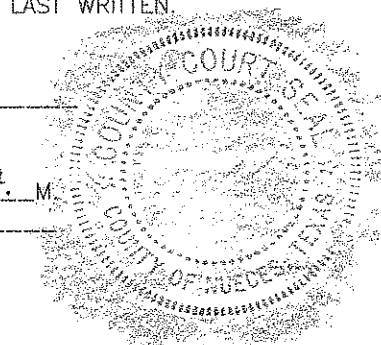
I, ERNEST BRIONES, CLERK OF THE COUNTY COURT IN AND FOR SAID COUNTY, DO HEREBY CERTIFY THAT THE FOREGOING INSTRUMENT DATED THE 28 DAY OF April, 2000, WITH ITS CERTIFICATE OF AUTHENTICATION WAS FILED FOR RECORD IN MY OFFICE THE 11 DAY OF May, 2000, AT 10:16 O'CLOCK A.M. AND DULY RECORDED THE 11 DAY OF May, 2000, AT 10:16 O'CLOCK B.M., IN SAID COUNTY IN VOLUME 60, PAGE 120-121, MAP RECORDS.

WITNESS MY HAND AND SEAL OF THE COUNTY COURT, IN AND FOR SAID COUNTY, AT OFFICE IN CORPUS CHRISTI, TEXAS, THE DAY AND YEAR LAST WRITTEN.

NO. 2000019102
FILED FOR RECORD

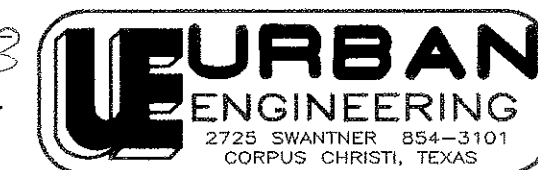
AT 10:16 O'CLOCK A.M.
May 11, 2000

ERNEST BRIONES
CLERK COUNTY COURT
NUECES COUNTY, TEXAS



Ernest Briones
ERNEST BRIONES, COUNTY CLERK
NUECES COUNTY, TEXAS
BY: Mary Louise Martinez
DEPUTY
MARY LOUISE MARTINEZ

BY: Mary Louise Martinez
DEPUTY
MARY LOUISE MARTINEZ

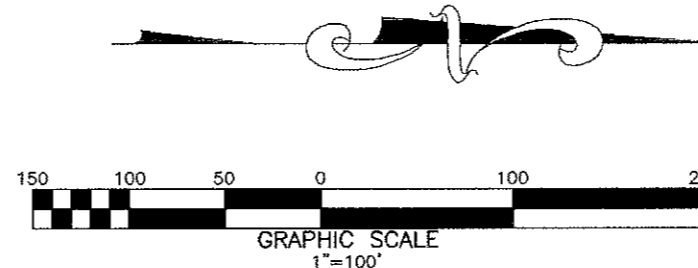


DATE: AUG. 11, 1999
SCALE: 1"= 100'
JOB NO. 20492.04.00
SHEET 1 OF 2

PLAT OF COUNTRY CREEK UNIT 4

BEING 27.15 ACRES MORE OR LESS OUT OF SECTION A
AND SECTION 31, LAURELES FARM TRACTS, A MAP OF
WHICH IS RECORDED IN VOLUME 3, PAGE 15, MAP
RECORDS OF NUECES COUNTY, TEXAS, ALSO BEING OUT
OF LANDS DESCRIBED IN DOCUMENT NO. 839128
OFFICIAL PUBLIC RECORDS OF REAL PROPERTY OF NUECES

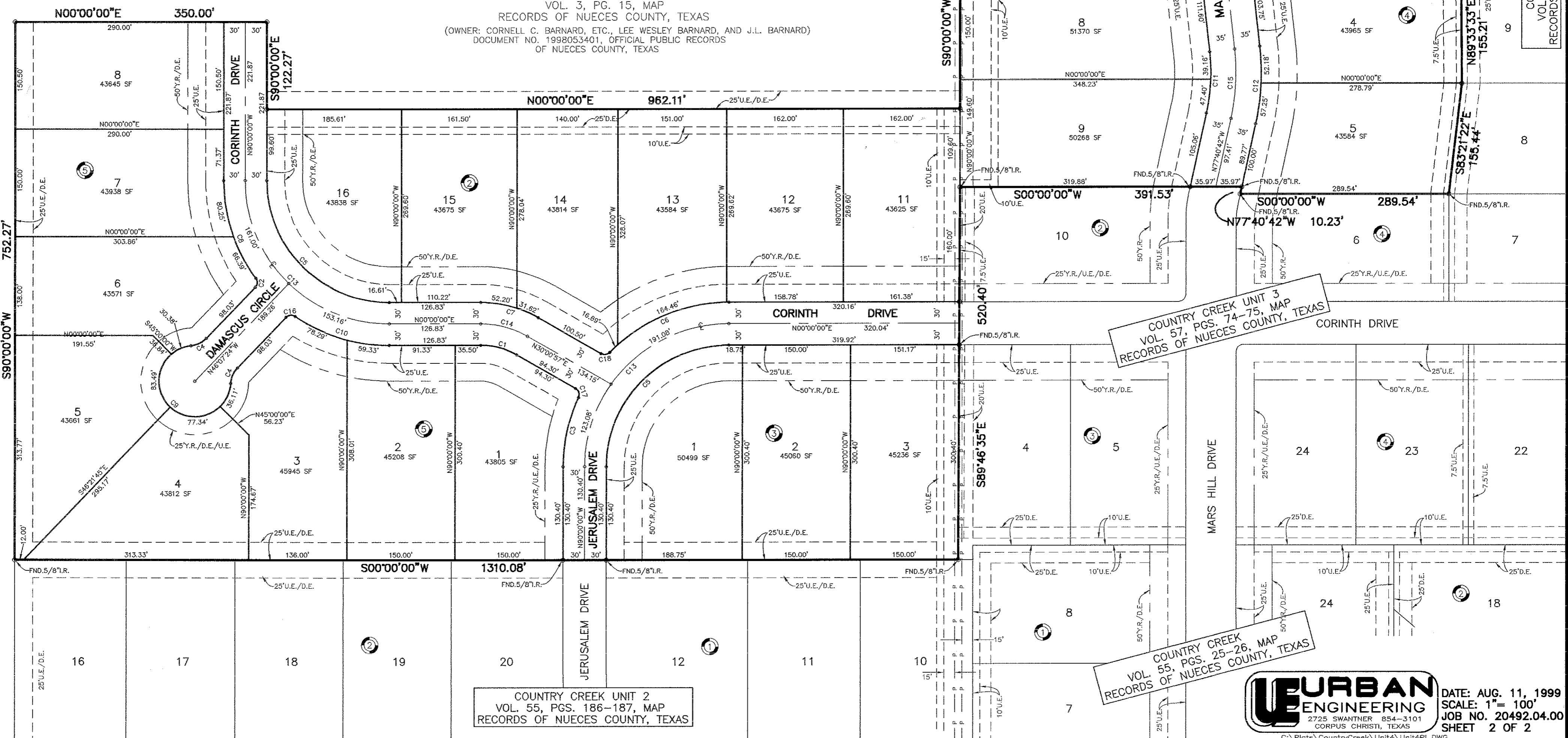
COUNTY ROAD 41



- C1 DELTA= 30°00'57"
RADIUS= 100.00'
TANGENT= 26.81'
LENGTH= 52.39'
- C2 DELTA= 80°24'21"
RADIUS= 10.00'
TANGENT= 8.45'
LENGTH= 14.03'
- C3 DELTA= 24°49'27"
RADIUS= 230.00'
TANGENT= 50.62'
LENGTH= 99.65'
- C4 DELTA= 40°14'34"
RADIUS= 34.50'
TANGENT= 12.64'
LENGTH= 24.23'
- C5 DELTA= 90°00'00"
RADIUS= 170.00'
TANGENT= 170.00'
LENGTH= 267.04'
- C6 DELTA= 45°55'47"
RADIUS= 230.00'
TANGENT= 97.46'
LENGTH= 184.37'
- C7 DELTA= 30°00'57"
RADIUS= 160.00'
TANGENT= 42.90'
LENGTH= 83.82'
- C8 DELTA= 36°31'45"
RADIUS= 230.00'
TANGENT= 75.91'
LENGTH= 146.64'
- C9 DELTA= 260°29'08"
RADIUS= 50.00'
TANGENT= ---
LENGTH= 227.32'
- C10 DELTA= 34°16'58"
RADIUS= 230.00'
TANGENT= 70.94'
LENGTH= 137.62'
- C11 DELTA= 18°42'58"
RADIUS= 265.00'
TANGENT= 43.67'
LENGTH= 86.56'
- C12 DELTA= 18°42'58"
RADIUS= 335.00'
TANGENT= 55.21'
LENGTH= 109.43'
- C13 DELTA= 90°00'00"
RADIUS= 200.00'
TANGENT= 200.00'
LENGTH= 314.16'
- C14 DELTA= 30°00'57"
RADIUS= 130.00'
TANGENT= 34.85'
LENGTH= 68.10'
- C15 DELTA= 18°42'58"
RADIUS= 300.00'
TANGENT= 49.44'
LENGTH= 98.00'
- C16 DELTA= 80°24'21"
RADIUS= 10.00'
TANGENT= 8.45'
LENGTH= 14.03'
- C17 DELTA= 84°48'30"
RADIUS= 10.00'
TANGENT= 9.13'
LENGTH= 14.80'
- C18 DELTA= 75°56'44"
RADIUS= 10.00'
TANGENT= 7.81'
LENGTH= 13.26'

SECTION 31
LAURELES FARM TRACTS
VOL. 3, PG. 15, MAP
RECORDS OF NUECES COUNTY, TEXAS
(OWNER: CORNELL C. BARNARD, ETC., LEE WESLEY BARNARD, AND J.L. BARNARD)
DOCUMENT NO. 1998053401, OFFICIAL PUBLIC RECORDS
OF NUECES COUNTY, TEXAS

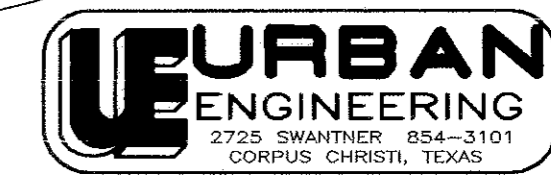
SECTION 31
LAURELES FARM TRACTS
VOL. 3, PG. 15, MAP
RECORDS OF NUECES COUNTY, TEXAS
(OWNER: CORNELL C. BARNARD, LEE WESLEY BARNARD, AND J.L. BARNARD)
DOCUMENT NO. 1998053401, OFFICIAL PUBLIC RECORDS
OF NUECES COUNTY, TEXAS



COUNTRY CREEK UNIT 2
VOL. 55, PGS. 186-187, MAP
RECORDS OF NUECES COUNTY, TEXAS

COUNTRY CREEK UNIT 3
VOL. 57, PGS. 74-75, MAP
RECORDS OF NUECES COUNTY, TEXAS

COUNTRY CREEK
VOL. 55, PGS. 25-26, MAP
RECORDS OF NUECES COUNTY, TEXAS



DATE: AUG. 11, 1999
SCALE: 1" = 100'
JOB NO. 20492.04.00
SHEET 2 OF 2