

PLAT OF COUNTRY CREEK UNIT 2

BEING 39.39 ACRES OF LAND OUT OF SECTION 31, LAURELES FARM TRACTS, A MAP OF WHICH IS RECORDED IN VOLUME 3, PAGE 15, MAP RECORDS OF NUECES COUNTY, TEXAS

- NOTES:**
1. 5/8 INCH IRON RODS AT ALL CORNERS.
 2. THE YARD REQUIREMENT, AS DEPICTED ON THIS PLAT IS A REQUIREMENT OF THE ZONING ORDINANCE AND IS SUBJECT TO CHANGE AS THE ZONING MAY CHANGE
 3. NO DRIVEWAY ACCESS IS PERMITTED TO SOUTH OSO PARKWAY FROM LOTS 1, 2, & 3 IN BLOCK 1 AND LOTS 1-5 IN BLOCK 2.
 4. "THE COUNTRY CREEK UNIT 2 ARCHITECTURAL CONTROL COMMITTEE WILL BE RESPONSIBLE FOR MAINTENANCE OF OPEN DITCHES WITHIN DRAINAGE EASEMENTS OR WITHIN THE STREET RIGHT-OF-WAY OF JERUSALEM DRIVE, NAZARETH DRIVE OR MT. ZION DRIVE UPON ANNEXATION INTO THE CITY LIMITS."
 5. "IN ACCORDANCE WITH COMMUNITY PANEL NO. 485494 0520 D, MAP REVISED JUNE 4, 1987, THIS SUBDIVISION IS LOCATED IN ZONE "B."

STATE OF TEXAS
COUNTY OF NUECES

I, JUAN J. SALAZAR, REGISTERED PROFESSIONAL LAND SURVEYOR FOR URBAN ENGINEERING, HEREBY CERTIFY THAT THE FOREGOING MAP WAS PREPARED FROM SURVEYS MADE ON THE GROUND UNDER MY DIRECTION AND IS TRUE AND CORRECT; THAT I HAVE BEEN ENGAGED UNDER CONTRACT TO SET ALL LOT AND BLOCK CORNERS AS SHOWN HEREON AND TO COMPLETE SUCH OPERATIONS WITHOUT DELAY.

THIS THE 2nd DAY OF SEPTEMBER, 1993.

Juan J. Salazar
JUAN J. SALAZAR, R.P.L.S.
TEXAS LICENSE NO. 4909



STATE OF TEXAS
COUNTY OF NUECES

THIS FINAL PLAT OF THE HEREIN DESCRIBED PROPERTY WAS APPROVED BY THE DEPARTMENT OF ENGINEERING SERVICES OF THE CITY OF CORPUS CHRISTI, TEXAS.

THIS THE 24th DAY OF September, 1993.

Carl Crull
CARL CRULL
DIRECTOR OF ENGINEERING SERVICES/CITY ENGINEER

STATE OF TEXAS
COUNTY OF NUECES

THIS FINAL PLAT OF THE HEREIN DESCRIBED PROPERTY WAS APPROVED ON BEHALF OF THE CITY OF CORPUS CHRISTI, TEXAS BY THE PLANNING COMMISSION.

THIS THE 18th DAY OF November, 1992

Brandol M. Harvey
BRANDOL M. HARVEY,
DIRECTOR OF PLANNING

Shirley Mims
SHIRLEY MIMS, CHAIRMAN
93-066

STATE OF TEXAS
COUNTY OF NUECES

I, ERNEST BRIONES, CLERK OF THE COUNTY COURT IN AND FOR SAID COUNTY, DO HEREBY CERTIFY THAT THE FOREGOING INSTRUMENT DATED THE 27 DAY OF Aug., 1993, WITH ITS CERTIFICATE OF AUTHENTICATION WAS FILED FOR RECORD IN MY OFFICE THE 30 DAY OF September, 1993. AT 4:22 O'CLOCK P. M., AND DULY RECORDED THE 1 DAY OF October, 1993. AT 11 O'CLOCK A. M., IN SAID COUNTY IN VOLUME 55, PAGE 186, MAP RECORDS.

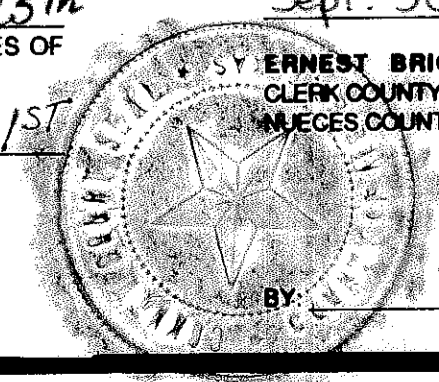
WITNESS MY HAND AND SEAL OF THE COUNTY COURT, IN AND FOR SAID COUNTY, AT OFFICE IN CORPUS CHRISTI, TEXAS, THE DAY AND YEAR LAST WRITTEN.

NO. 877217
FILED FOR RECORD
AT 4:22 O'CLOCK P. M.
Sept. 30, 1993

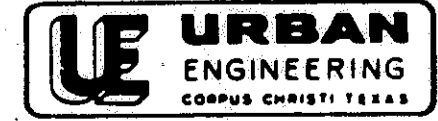
Ernest Briones
ERNEST BRIONES, COUNTY CLERK
NUECES COUNTY, TEXAS

BY: *Eric Torres*
DEPUTY
ERIC TORRES

ERNEST BRIONES
CLERK COUNTY COURT
NUECES COUNTY, TEXAS



BY: *Eric Torres*
DEPUTY
ERIC TORRES



DATE: OCTOBER 2, 1992
SCALE: 1" =
JOB NO. 20482.02.00
SHEET 1 OF 2

STATE OF TEXAS
COUNTY OF NUECES

THIS FINAL PLAT APPROVED BY THE CORPUS CHRISTI NUECES COUNTY HEALTH UNIT. ANY PRIVATE WATER SUPPLY AND/OR SEWERAGE SYSTEM SHALL BE APPROVED BY THE CORPUS CHRISTI-NUECES COUNTY HEALTH DEPARTMENT PRIOR TO INSTALLATION.

THIS THE 18th DAY OF August, 1993.

R. Leon Decker
R. LEON DECKER, P.E.
PUBLIC HEALTH ENGINEER
CORPUS CHRISTI, NUECES COUNTY, TEXAS

STATE OF TEXAS
COUNTY OF NUECES

"THE FINAL PLAT OF THE HEREIN DESCRIBED PROPERTY IS RECOMMENDED FOR APPROVAL BY THE UNDERSIGNED COUNTY ENGINEER."

Bernardo Garcia
BERNARDO GARCIA COUNTY ENGINEER,
NUECES COUNTY, TEXAS

STATE OF TEXAS
COUNTY OF NUECES

I, ERNEST BRIONES, CLERK OF THE COMMISSIONERS COURT OF NUECES COUNTY, TEXAS, HEREBY CERTIFY THAT THE FOREGOING MAP WAS APPROVED AND ACCEPTED BY SAID COURT ON THE 25th DAY OF AUGUST, 1993, AS SHOWN BY ORDER OF RECORD IN THE MINUTES OF SAID COURT IN VOLUME 26, PAGE 619.

WITNESS MY HAND AND SEAL OF SAID COURT AT OFFICE IN CORPUS CHRISTI, TEXAS, THIS THE 15th DAY OF SEPTEMBER, 1993.

Ernest M. Briones
ERNEST BRIONES, CLERK OF THE
COMMISSIONERS COURT, NUECES COUNTY, TEXAS

STATE OF TEXAS
COUNTY OF NUECES

COUNTRY CREEK PARTNERS, A TEXAS GENERAL PARTNERSHIP, HEREBY CERTIFIES THAT IT IS THE OWNER OF THE LANDS EMBRACED WITHIN THE BOUNDARIES OF THE FOREGOING PLAT; THAT IT HAS HAD SAID LAND SURVEYED AND SUBDIVIDED AS SHOWN; THAT STREETS ARE DEDICATED TO THE PUBLIC USE FOREVER; THAT EASEMENTS AS SHOWN ARE DEDICATED TO THE PUBLIC USE FOR THE INSTALLATION, OPERATION, AND USE OF PUBLIC UTILITIES; AND THAT THIS MAP WAS MADE FOR THE PURPOSE OF DESCRIPTION AND DEDICATION.

THIS THE 27th DAY OF August, 1993.

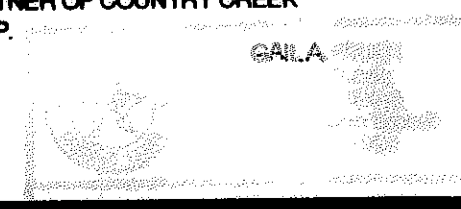
COUNTRY CREEK PARTNERS
Gene Graham
GENE GRAHAM, PARTNER

STATE OF TEXAS
COUNTY OF NUECES

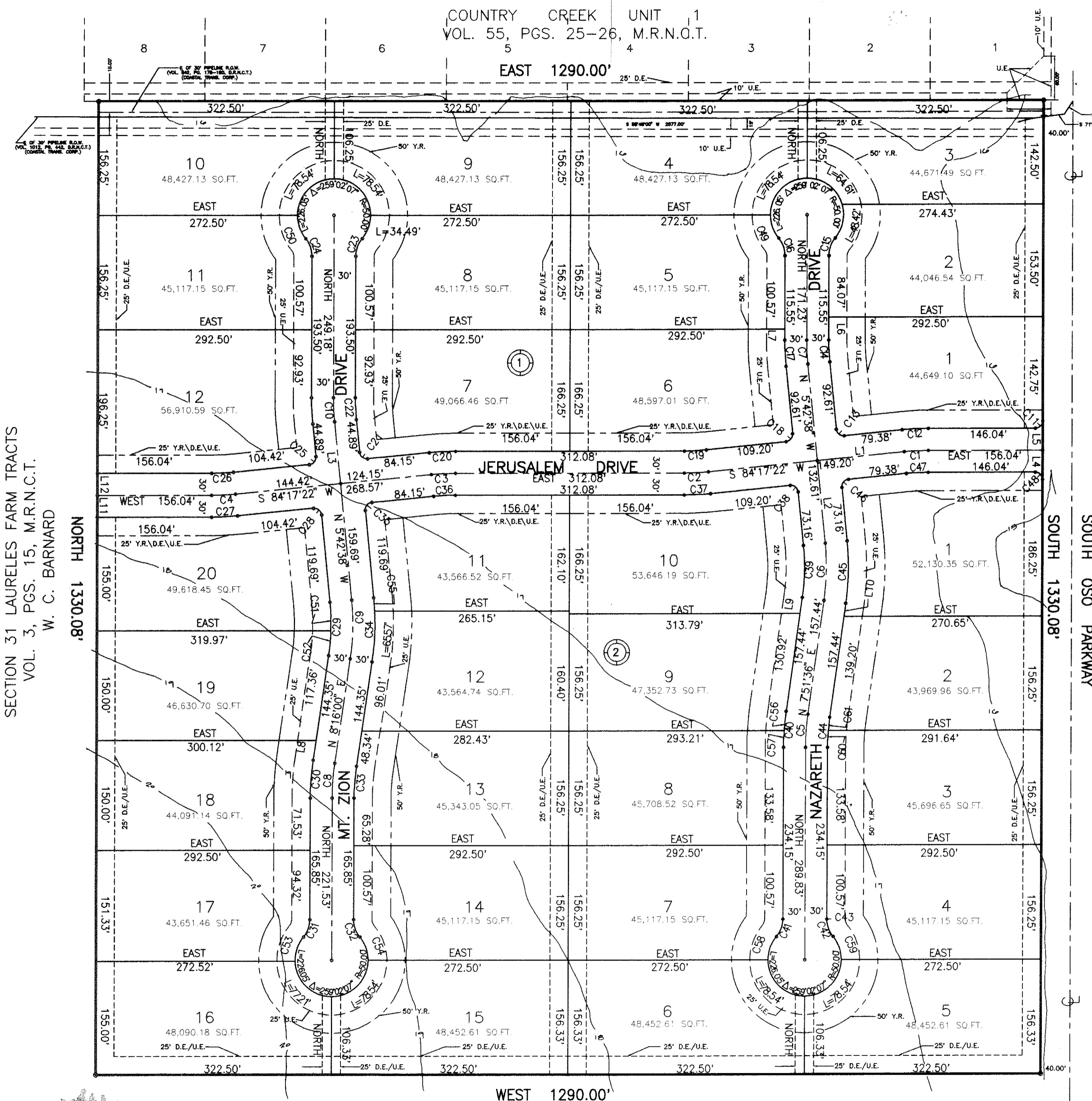
THIS INSTRUMENT WAS ACKNOWLEDGED BEFORE ME BY GENE GRAHAM PARTNER OF COUNTRY CREEK PARTNERS, A TEXAS GENERAL PARTNERSHIP, ON BEHALF OF SAID PARTNERSHIP.

THIS THE 27th DAY OF August, 1993.

Gail A. Pruett
NOTARY PUBLIC IN AND FOR THE STATE OF TEXAS
Gail A. Pruett



COUNTRY CREEK UNIT 1
VOL. 55, PGS. 25-26, M.R.N.O.T.



LINE	BEARING	DISTANCE
L1	S 84°17'22" W	119.38
L2	N 5°42'38" W	113.16
L3	N 5°42'38" W	84.89
L4	N 0°00'00" E	40.00
L5	N 0°00'00" E	40.00
L6	N 0°00'00" E	31.48
L7	S 0°00'00" E	14.98
L8	S 8°16'00" W	26.99
L9	S 7°51'36" W	26.52
L10	N 7°51'36" E	18.23
L11	N 0°00'00" E	30.00
L12	N 0°00'00" E	30.00

CURVE	ARC	DELTA	RADIUS	TAN LENGTH
C1	32.89	5°42'38"	330.00	16.46
C2	32.89	5°42'38"	330.00	16.46
C3	32.89	5°42'38"	330.00	16.46
C4	32.89	5°42'38"	330.00	16.46
C5	45.27	7°51'36"	330.00	22.67
C6	78.16	13°34'14"	330.00	39.28
C7	32.89	5°42'38"	330.00	16.46
C8	47.61	8°16'00"	330.00	23.85
C9	80.50	13°58'36"	330.00	40.45
C10	32.89	5°42'38"	330.00	16.46
C11	15.71	90°00'00"	10.00	10.00
C12	35.88	5°42'38"	360.00	17.98
C13	15.71	90°00'00"	10.00	10.00
C14	29.90	5°42'38"	300.00	14.98
C15	25.86	39°31'04"	37.50	13.47
C16	25.86	39°31'04"	37.50	13.47
C17	35.88	5°42'38"	360.00	17.98
C18	15.71	90°00'00"	10.00	10.00
C19	29.90	5°42'38"	300.00	14.98
C20	35.88	5°42'38"	360.00	17.98
C21	15.71	90°00'00"	10.00	10.00
C22	29.90	5°42'38"	300.00	14.98
C23	25.86	39°31'04"	37.50	13.47
C24	25.86	39°31'04"	37.50	13.47
C25	15.71	90°00'00"	10.00	10.00
C26	29.90	5°42'38"	300.00	14.98
C27	35.88	5°42'38"	360.00	17.98
C28	15.71	90°00'00"	10.00	10.00
C29	73.19	13°58'36"	300.00	36.78
C30	51.94	8°16'00"	360.00	26.02
C31	25.86	39°31'04"	37.50	13.47
C32	25.86	39°31'04"	37.50	13.47
C33	43.28	8°16'00"	300.00	21.68
C34	87.82	13°58'36"	360.00	44.13
C35	15.71	90°00'00"	10.00	10.00
C36	29.90	5°42'38"	300.00	14.98
C37	35.88	5°42'38"	360.00	17.98
C38	15.71	90°00'00"	10.00	10.00
C39	71.06	13°34'14"	300.00	35.69
C40	49.39	7°51'36"	360.00	24.73
C41	25.86	39°31'04"	37.50	13.47
C42	25.86	39°31'04"	37.50	13.47
C43	0.00	0°00'00"	37.50	0.00
C44	41.16	7°51'36"	300.00	20.61
C45	85.27	13°34'14"	360.00	42.83
C46	15.71	90°00'00"	10.00	10.00
C47	29.90	5°42'38"	300.00	14.98
C48	15.71	90°00'00"	10.00	10.00
C49	34.49	39°31'04"	50.00	17.98
C50	34.49	39°31'04"	50.00	17.98
C51	39.18	7°28'56"	300.00	19.62
C52	34.01	6°29'43"	300.00	17.02
C53	34.49	39°31'04"	50.00	17.98
C54	34.49	39°31'04"	50.00	17.98
C55	22.23	4°12'08"	360.00	13.21
C56	26.70	4°14'58"	360.00	13.36
C57	22.69	3°36'38"	360.00	11.35
C58	34.49	39°31'04"	50.00	17.98
C59	34.49	39°31'04"	50.00	17.98
C60	22.69	4°20'02"	300.00	11.35
C61	18.46	3°31'34"	300.00	9.23

SECTION 31 LAURELES FARM TRACTS
VOL. 3, PGS. 15, M.R.N.C.T.
W. C. BARNARD

SOUTH OSO PARKWAY
SOUTH 1330.08'

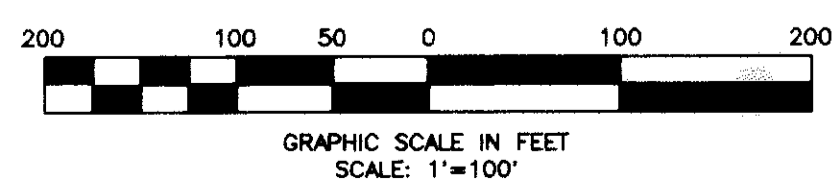
PLAT OF
**COUNTRY CREEK
UNIT 2**

- NOTES:
- 5/8 INCH IRON RODS AT ALL CORNERS.
 - THE YARD REQUIREMENT, AS DEPICTED ON THIS PLAT IS A REQUIREMENT OF THE ZONING ORDINANCE AND IS SUBJECT TO CHANGE AS THE ZONING MAY CHANGE.
 - NO DRIVEWAY ACCESS IS PERMITTED TO SOUTH OSO PARKWAY FROM LOTS 1, 2, & 3 IN BLOCK 1 AND LOTS 1-5 IN BLOCK 2.
 - THE COUNTRY CREEK UNIT 2 ARCHITECTURAL CONTROL COMMITTEE WILL BE RESPONSIBLE FOR MAINTENANCE OF OPEN DITCHES WITHIN DRAINAGE EASEMENTS OR WITHIN THE STREET RIGHT-OF-WAY OF JERUSALEM DRIVE, NAZARETH DRIVE OR MT. ZION DRIVE UPON ANNEXATION INTO THE CITY LIMITS.

No. 877217
FILED FOR RECORD
AT 4:22 O'CLOCK P. M.
SEP 30 1993

ERNEST M. BRIONES
CLERK COUNTY COURT
HUÉSCAR COUNTY, TEXAS
DEPUTY
ERIC TORRES

JOB NO. 20492.0200
DATE: 10-14-1992
SCALE: 1" = 100'
SHEET 2 OF 2



C:\DATA\JN20492\UNIT2PLT.DWG (JUS)



SECTION 31 LAURELES FARM TRACTS
VOL. 3, PGS. 15, M.R.N.C.T.
W. C. BARNARD