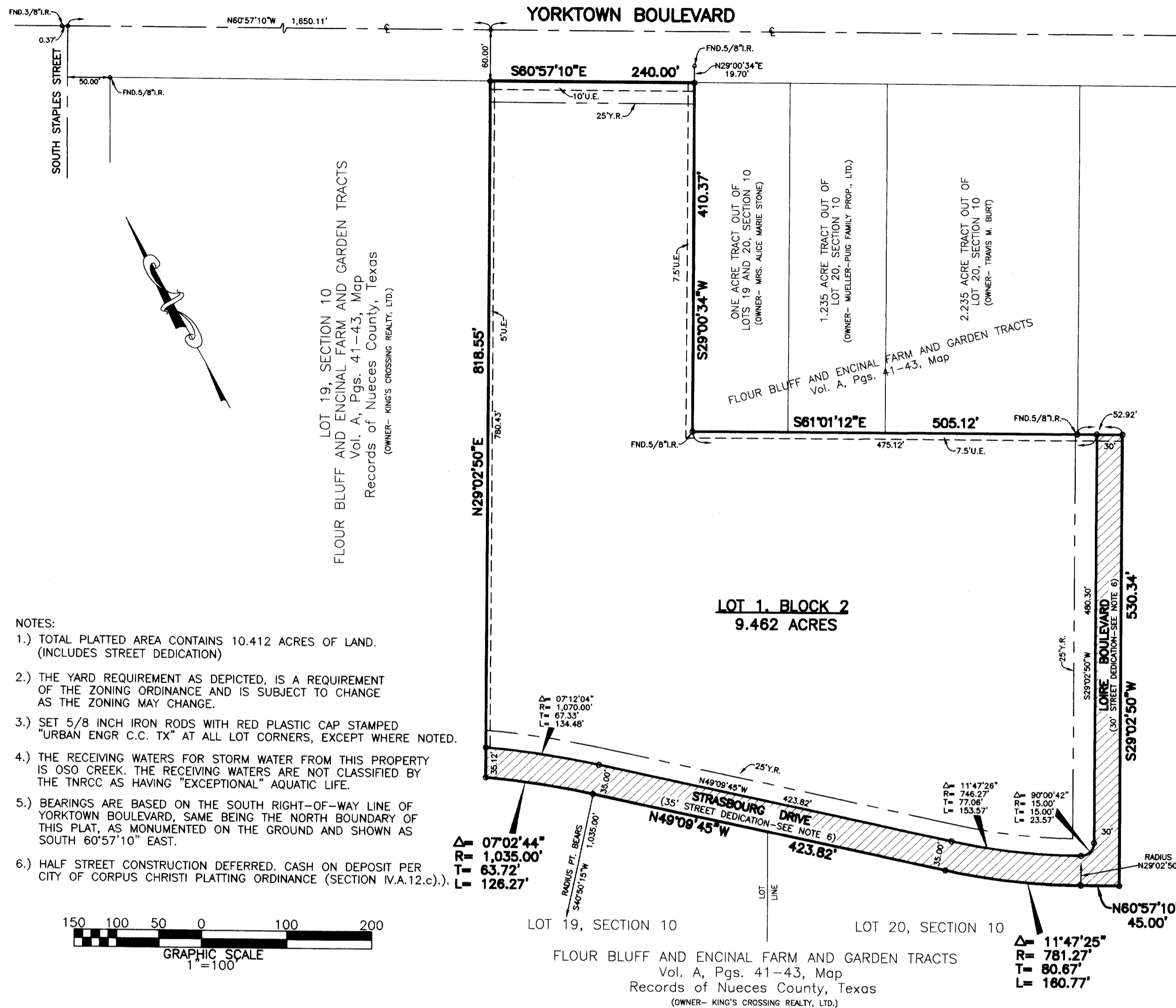


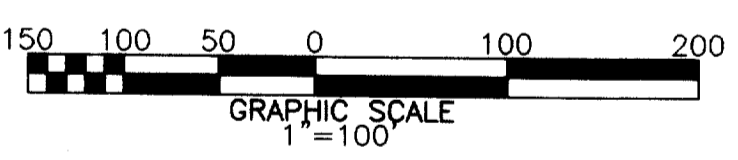
N.E. CORNER OF
LOT 19, BLOCK 2
KING'S CROSSING UNIT 4
Vol. 58, Pg. 126, Map
Records of Nueces County, Texas

Plat Of King's Crossing Unit 13 Block 2, Lot 1

BEING 10.412 ACRES OF LAND OUT OF LOTS 19 AND 20, SECTION 10, FLOUR BLUFF AND ENCINAL FARM AND GARDEN TRACTS, A MAP OF WHICH IS RECORDED IN VOLUME A, PAGES 41-43, MAP RECORDS OF NUECES COUNTY, TEXAS.



- NOTES:
- TOTAL PLATTED AREA CONTAINS 10.412 ACRES OF LAND. (INCLUDES STREET DEDICATION)
 - THE YARD REQUIREMENT AS DEPICTED, IS A REQUIREMENT OF THE ZONING ORDINANCE AND IS SUBJECT TO CHANGE AS THE ZONING MAY CHANGE.
 - SET 5/8 INCH IRON RODS WITH RED PLASTIC CAP STAMPED "URBAN ENGR C.C. TX" AT ALL LOT CORNERS, EXCEPT WHERE NOTED.
 - THE RECEIVING WATERS FOR STORM WATER FROM THIS PROPERTY IS OSO CREEK. THE RECEIVING WATERS ARE NOT CLASSIFIED BY THE TNRCC AS HAVING "EXCEPTIONAL" AQUATIC LIFE.
 - BEARINGS ARE BASED ON THE SOUTH RIGHT-OF-WAY LINE OF YORKTOWN BOULEVARD, SAME BEING THE NORTH BOUNDARY OF THIS PLAT, AS MONUMENTED ON THE GROUND AND SHOWN AS SOUTH 60°57'10" EAST.
 - HALF STREET CONSTRUCTION DEFERRED. CASH ON DEPOSIT PER CITY OF CORPUS CHRISTI PLATTING ORDINANCE (SECTION IV.A.12.c)).



STATE OF TEXAS
COUNTY OF NUECES

KING'S CROSSING REALTY, LTD., A TEXAS LIMITED PARTNERSHIP, HEREBY CERTIFIES THAT IT IS THE OWNER OF THE LANDS EMBRACED WITHIN THE BOUNDARIES OF THE FOREGOING PLAT; THAT IT HAS HAD SAID LANDS SURVEYED AND SUBDIVIDED AS SHOWN; THAT EASEMENTS AS SHOWN ARE DEDICATED TO THE PUBLIC USE FOR THE PURPOSE OF INSTALLATION, OPERATION AND USE OF PUBLIC UTILITIES; AND THAT THIS MAP WAS MADE FOR THE PURPOSE OF DESCRIPTION AND DEDICATION.

THIS THE 27 DAY OF July, 2000

SHELL LAND MANAGEMENT COMPANY, INC., GENERAL PARTNER

B. Wallace
BY: BEN B. WALLACE, PRESIDENT

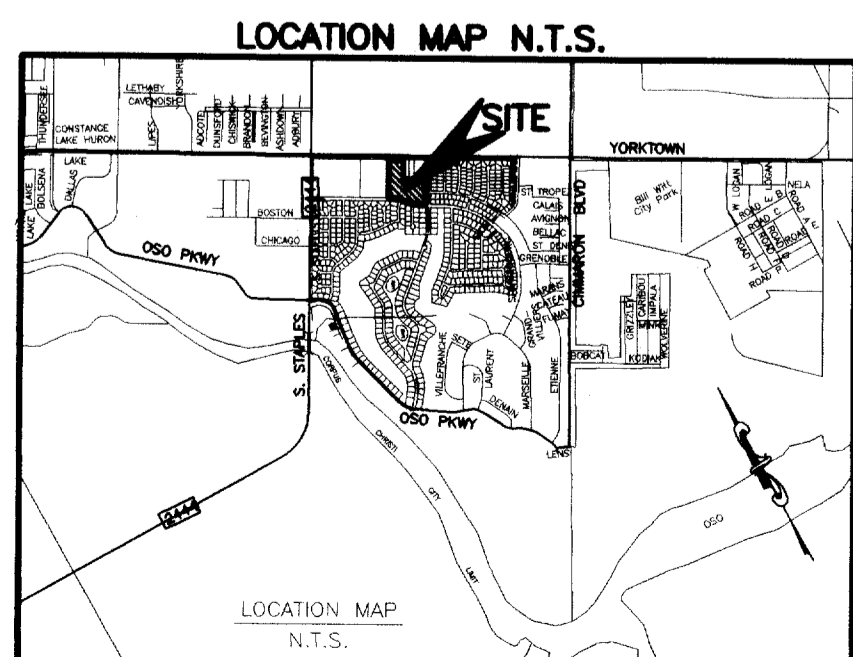
STATE OF TEXAS
COUNTY OF NUECES

THIS INSTRUMENT WAS ACKNOWLEDGED BEFORE ME BY BEN B. WALLACE, PRESIDENT OF SHELL LAND MANAGEMENT COMPANY, INC., GENERAL PARTNER OF KING'S CROSSING REALTY, LTD., A TEXAS LIMITED PARTNERSHIP, ON BEHALF OF SAID LIMITED PARTNERSHIP.

THIS THE 27 DAY OF July, 2000

Ernest Rene Rodriguez
NOTARY PUBLIC IN AND FOR THE STATE OF TEXAS

ERNEST RENE RODRIGUEZ
Notary Public
State of Texas
My Comm. Exp. 04/25/2004



LOT 19, SECTION 10
FLOUR BLUFF AND ENCINAL FARM AND GARDEN TRACTS
Vol. A, Pgs. 41-43, Map
Records of Nueces County, Texas
(OWNER- KING'S CROSSING REALTY, LTD.)

LOT 20, SECTION 10
FLOUR BLUFF AND ENCINAL FARM AND GARDEN TRACTS
Vol. A, Pgs. 41-43, Map
Records of Nueces County, Texas
(OWNER- KING'S CROSSING REALTY, LTD.)

STATE OF TEXAS
COUNTY OF NUECES

I, JUAN J. SALAZAR, REGISTERED PROFESSIONAL LAND SURVEYOR FOR URBAN ENGINEERING, HAVE PREPARED THE FOREGOING MAP FROM A SURVEY MADE ON THE GROUND UNDER MY DIRECTION AND IS TRUE AND CORRECT TO THE BEST OF MY KNOWLEDGE, INFORMATION AND BELIEF; I HAVE BEEN ENGAGED UNDER CONTRACT TO SET ALL LOT AND BLOCK CORNERS AS SHOWN HEREON AND TO COMPLETE SUCH OPERATIONS WITH DUE AND REASONABLE DILIGENCE CONSISTENT WITH SOUND PROFESSIONAL PRACTICE.

THIS THE 27th DAY OF July, 2000

Juan J. Salazar
JUAN J. SALAZAR, R.P.S.
TEXAS LICENSE NO. 4909



STATE OF TEXAS
COUNTY OF NUECES

THIS FINAL PLAT OF THE HEREIN DESCRIBED PROPERTY WAS APPROVED BY THE DEPARTMENT OF ENGINEERING SERVICES OF THE CITY OF CORPUS CHRISTI, TEXAS.

THIS THE 22nd DAY OF Aug, 2000

Angel R. Escobar, P.E.
ANGEL R. ESCOBAR, P.E.
DIRECTOR OF ENGINEERING SERVICES

STATE OF TEXAS
COUNTY OF NUECES

THIS FINAL PLAT OF THE HEREIN DESCRIBED PROPERTY WAS APPROVED ON BEHALF OF THE CITY OF CORPUS CHRISTI, TEXAS BY THE PLANNING COMMISSION.

THIS THE 16th DAY OF February, 2000

Michael N. Gunning
MICHAEL N. GUNNING
SECRETARY

David Berlanga Sr.
DAVID BERLANGA SR., CHAIRMAN

00-076

STATE OF TEXAS
COUNTY OF NUECES

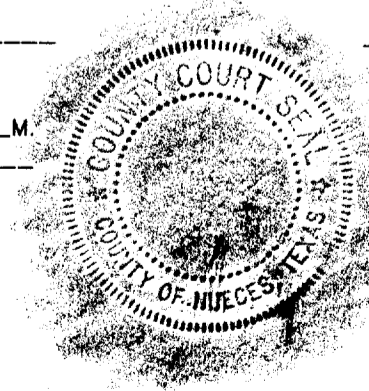
I, ERNEST BRIONES, CLERK OF THE COUNTY COURT IN AND FOR SAID COUNTY, DO HEREBY CERTIFY THAT THE FOREGOING INSTRUMENT DATED THE 27 DAY OF July, 2000, WITH ITS CERTIFICATE OF AUTHENTICATION WAS FILED FOR RECORD IN MY OFFICE THE 1 DAY OF September, 2000 AT 3:34 O'CLOCK P.M. AND DULY RECORDED THE 1 DAY OF September, 2000, AT 3:34 O'CLOCK P.M., IN SAID COUNTY IN VOLUME 60, PAGE 164, MAP RECORDS.

WITNESS MY HAND AND SEAL OF THE COUNTY COURT, IN AND FOR SAID COUNTY, AT OFFICE IN CORPUS CHRISTI, TEXAS, THE DAY AND YEAR LAST WRITTEN.

NO. 2000035155
FILED FOR RECORD

AT 3:34 O'CLOCK P.M.
September 1, 2000

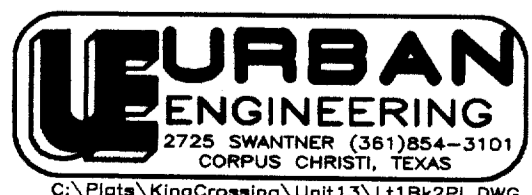
ERNEST BRIONES
CLERK COUNTY COURT
NUECES COUNTY, TEXAS



Ernest Briones
ERNEST BRIONES, COUNTY CLERK
NUECES COUNTY, TEXAS

Juanita Ramirez
DEPUTY
Juanita Ramirez

BY: *Juanita Ramirez*
DEPUTY
Juanita Ramirez



DATE: FEB. 10, 2000
SCALE: 1" = 100'
JOB NO. 20354.13.02
SHEET 1 OF 1