

- C1 $\Delta=23'18'05''$
R=525.00'
T=108.25'
L=213.51'
- C2 $\Delta=23'18'05''$
R=500.00'
T=103.10'
L=203.34'
- C3 $\Delta=23'18'05''$
R=475.00'
T=97.94'
L=193.18'
- C4 $\Delta=34'09'22''$
R=275.00'
T=84.49'
L=163.94'
- C5 $\Delta=34'09'22''$
R=300.00'
T=92.17'
L=178.84'
- C6 $\Delta=34'09'22''$
R=325.00'
T=99.85'
L=193.74'
- C7 $\Delta=23'18'05''$
R=325.00'
T=67.01'
L=132.17'
- C8 $\Delta=34'09'22''$
R=475.00'
T=145.93'
L=283.17'
- C9 $\Delta=73'56'14''$
R=515.00'
T=387.64'
L=664.58'
- C10 $\Delta=73'56'14''$
R=365.00'
T=274.73'
L=471.01'
- C11 $\Delta=73'56'14''$
R=340.00'
T=255.92'
L=438.75'
- C12 $\Delta=73'56'14''$
R=315.00'
T=237.10'
L=406.49'

Lot 1, Block 41
King's Crossing Unit 1 Phase 3
Vol. 59, Pgs. 183-188, Map
Records of Nueces County, Texas

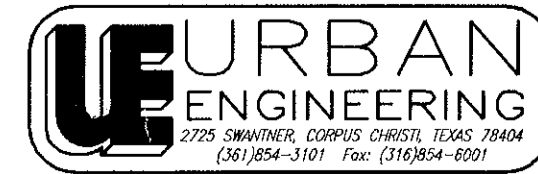
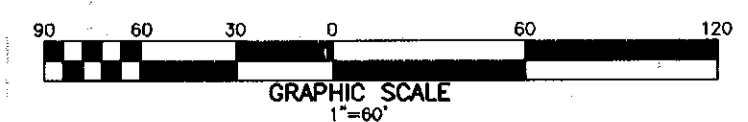
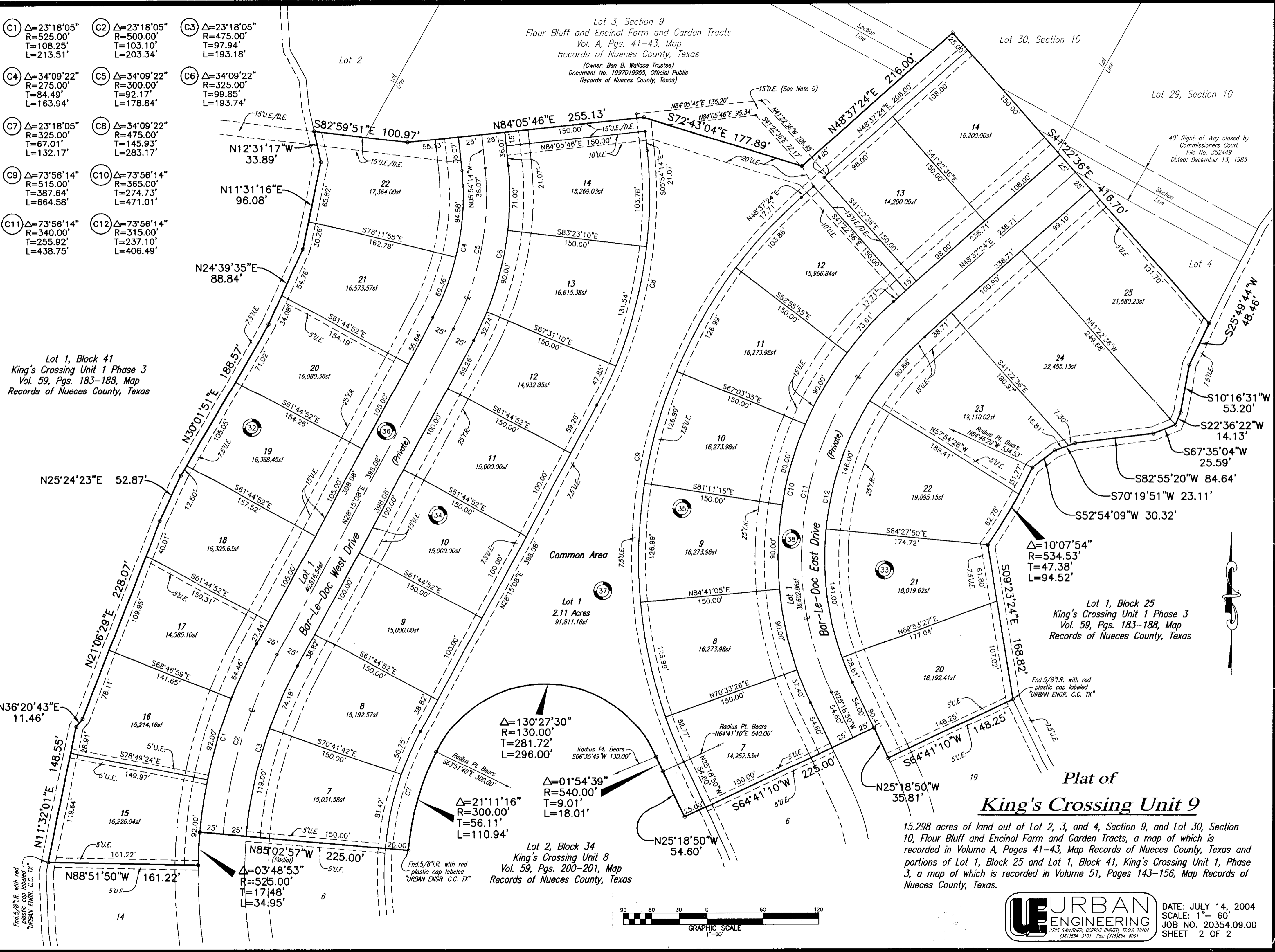
Lot 3, Section 9
Flour Bluff and Encinal Farm and Garden Tracts
Vol. A, Pgs. 41-43, Map
Records of Nueces County, Texas
(Owner: Ben B. Wallace Trustee)
Document No. 1997019955, Official Public
Records of Nueces County, Texas

Lot 1, Block 25
King's Crossing Unit 1 Phase 3
Vol. 59, Pgs. 183-188, Map
Records of Nueces County, Texas

Lot 2, Block 34
King's Crossing Unit 8
Vol. 59, Pgs. 200-201, Map
Records of Nueces County, Texas

Plat of
King's Crossing Unit 9

15.298 acres of land out of Lot 2, 3, and 4, Section 9, and Lot 30, Section 10, Flour Bluff and Encinal Farm and Garden Tracts, a map of which is recorded in Volume A, Pages 41-43, Map Records of Nueces County, Texas and portions of Lot 1, Block 25 and Lot 1, Block 41, King's Crossing Unit 1, Phase 3, a map of which is recorded in Volume 51, Pages 143-156, Map Records of Nueces County, Texas.



DATE: JULY 14, 2004
SCALE: 1" = 60'
JOB NO. 20354.09.00
SHEET 2 OF 2