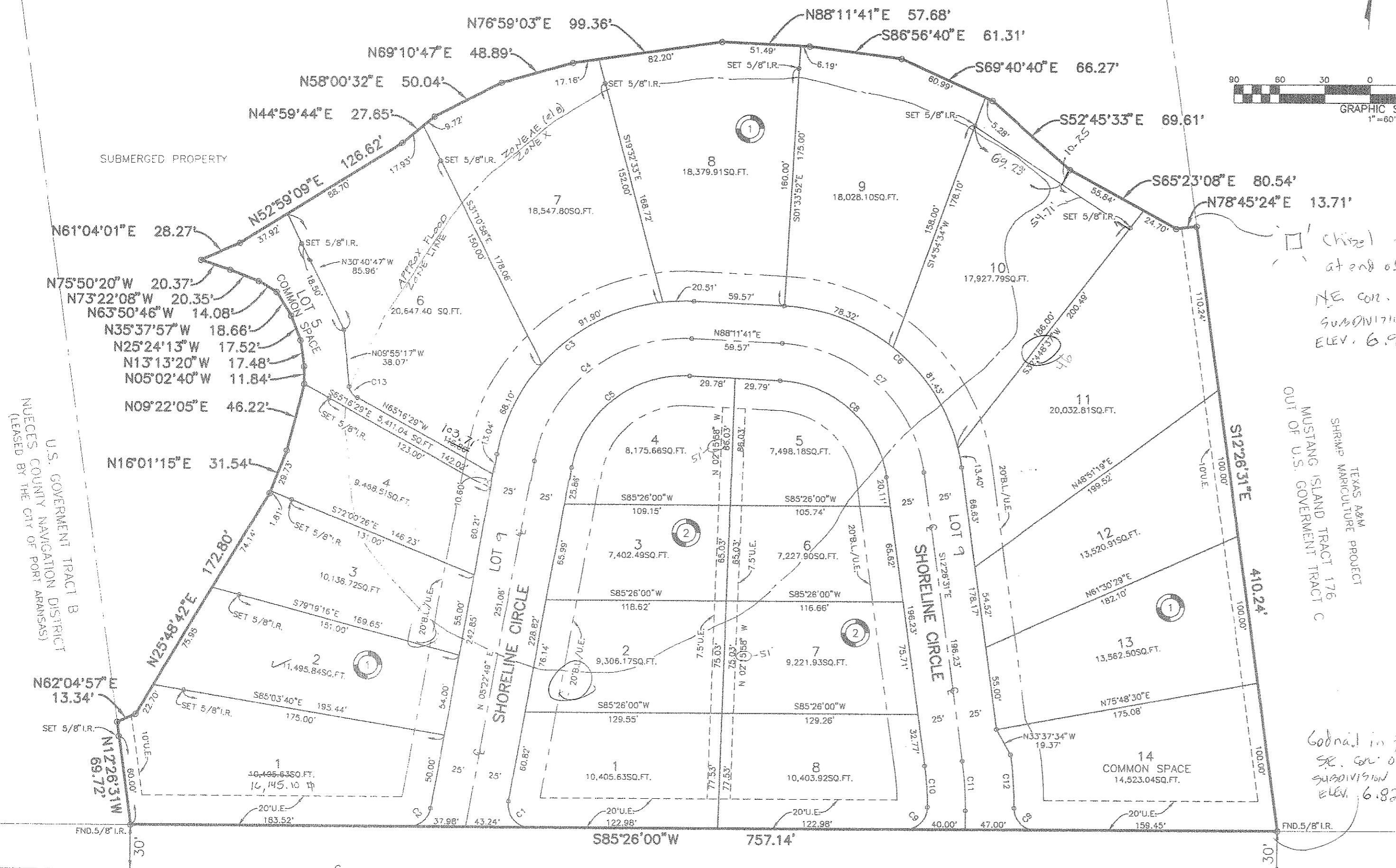
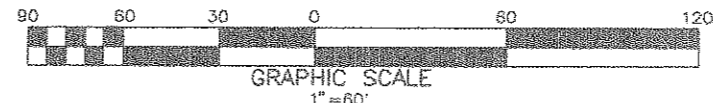
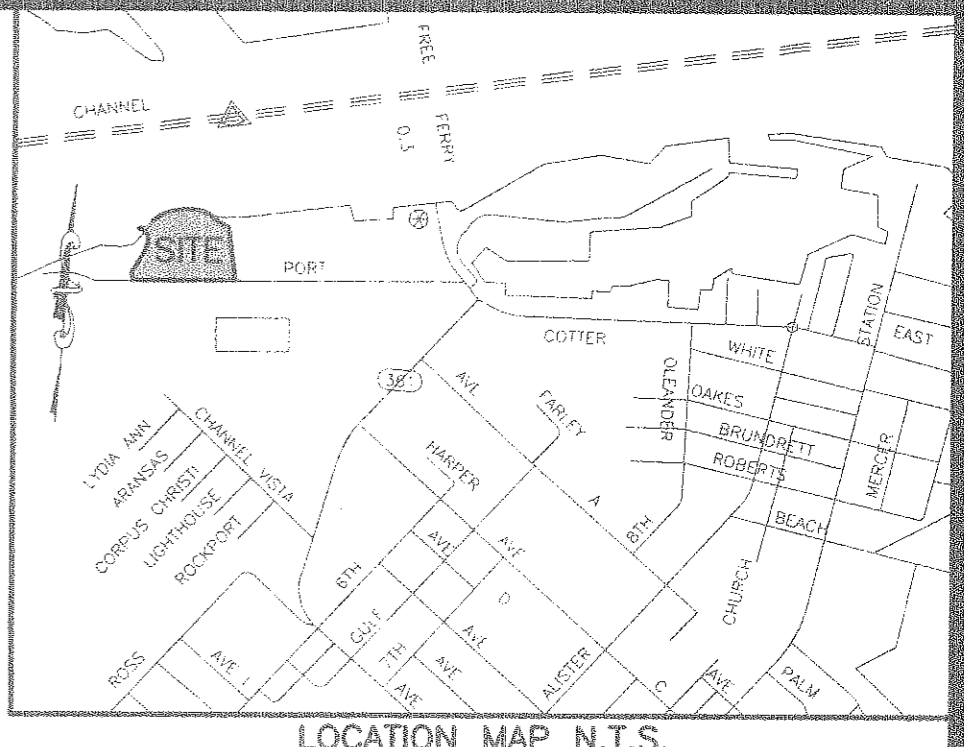


CORPUS CHRISTI SHIP CHANNEL  
PCCA SOUTH BULKHEAD LINE

3.952 ACRES OUT OF U.S. GOVERNMENT TRACT C



AMENDING PLAT OF  
PORPOISE POINT N.U.D.

BEING AN AMENDING PLAT OF PORPOISE POINT N.U.D., A MAP OF WHICH IS RECORDED IN VOLUME 59, PAGE 60, MAP RECORDS OF NUECES COUNTY, TEXAS. THE PURPOSE OF THIS AMENDING PLAT IS TO CORRECT THE 13 FOOT BUILDING LINE/UTILITY EASEMENT TO A 20 FOOT BUILDING LINE/UTILITY EASEMENT.

Chisel Square  
at end of Bulkhead  
NE cor. of  
Subdivision  
Elev. 6.90

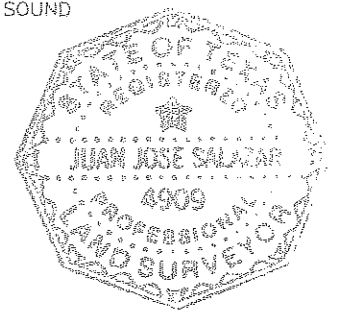
OUT OF U.S. GOVERNMENT TRACT C  
MUSTANG ISLAND TRACT 176  
SHARP MANICULTURE PROJECT  
TEXAS A&M

STATE OF TEXAS  
COUNTY OF NUECES

I, JUAN J. SALAZAR, REGISTERED PROFESSIONAL LAND SURVEYOR FOR URBAN ENGINEERING, HAVE PREPARED THE FOREGOING MAP FROM A SURVEY MADE ON THE GROUND UNDER MY DIRECTION AND IS TRUE AND CORRECT TO THE BEST OF MY KNOWLEDGE, INFORMATION AND BELIEF; I HAVE BEEN ENGAGED UNDER CONTRACT TO SET ALL LOT AND BLOCK CORNERS AS SHOWN HEREON AND TO COMPLETE SUCH OPERATIONS WITH DUE AND REASONABLE DILIGENCE CONSISTENT WITH SOUND PROFESSIONAL PRACTICE.

THIS THE 13<sup>th</sup> DAY OF October, 1998

Juan J. Salazar  
JUAN J. SALAZAR, R.P.L.S.  
TEXAS LICENSE NO. 4909



STATE OF TEXAS  
COUNTY OF NUECES

THIS FINAL PLAT OF THE HEREIN DESCRIBED PROPERTY WAS APPROVED ON BEHALF OF THE CITY OF PORT ARANSAS, TEXAS BY THE BUILDING OFFICIAL.

THIS THE 14 DAY OF October, 1998

Stephen Thompson  
CITY BUILDING OFFICIAL, STEPHEN THOMPSON

STATE OF TEXAS  
COUNTY OF NUECES

I, ERNEST BRIONES, CLERK OF THE COUNTY COURT IN AND FOR SAID COUNTY, DO HEREBY CERTIFY THAT THE FOREGOING INSTRUMENT DATED THE 13<sup>th</sup> DAY OF October, 1998, WITH ITS CERTIFICATE OF AUTHENTICATION WAS FILED FOR RECORD IN MY OFFICE ON THE 15<sup>th</sup> DAY OF October, 1998, AT 3:48 O'CLOCK P.M. AND DULY RECORDED THE 14<sup>th</sup> DAY OF October, 1998, AT 3:48 O'CLOCK P.M. IN SAID COUNTY IN VOLUME 59, PAGE 72, MAP RECORDS.

WITNESS MY HAND AND SEAL OF THE COUNTY COURT, IN AND FOR SAID COUNTY, AT OFFICE IN CORPUS CHRISTI, TEXAS, THE DAY AND YEAR LAST WRITTEN.

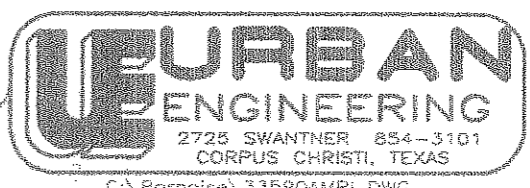
No. 1998046521  
FILED FOR RECORD

AT 3:48 O'CLOCK P.M. October 19, 1998

ERNEST BRIONES  
CLERK COUNTY COURT  
NUECES COUNTY, TEXAS

Ernest Briones  
ERNEST BRIONES, COUNTY CLERK  
NUECES COUNTY, TEXAS  
Sandra H. Mendez  
DEPUTY

BY Sandra H. Mendez  
Sandra H. Mendez



DATE: OCT. 13, 1998  
SCALE: 1" = 60'  
JOB NO. 33590.00.00

C1 Δ = 99°56'49"	C2 Δ = 80°03'11"	C13 Δ = 55°21'13"
R = 15.00	R = 15.00	R = 10.00'
T = 17.86'	T = 12.50'	T = 5.24'
L = 26.17'	L = 20.96'	L = 9.66'
C3 Δ = 82°48'52"	C4 Δ = 82°48'52"	
R = 125.00	R = 100.00	
T = 110.23'	T = 88.18'	
L = 180.67'	L = 144.54'	
C5 Δ = 82°48'52"	C6 Δ = 79°21'48"	
R = 75.00	R = 75.00	
T = 66.14'	T = 62.23'	
L = 108.40'	L = 173.14'	
C7 Δ = 79°21'48"	C8 Δ = 79°21'48"	
R = 100.00	R = 75.00	
T = 82.97'	T = 62.23'	
L = 138.52'	L = 103.89'	
C9 Δ = 90°00'00"	C10 Δ = 07°52'31"	
R = 15.00	R = 219.25'	
T = 15.00'	T = 15.09'	
L = 23.56'	L = 30.14'	
C11 Δ = 07°52'31"	C12 Δ = 07°52'31"	
R = 244.25'	R = 276.25'	
T = 16.81'	T = 19.02'	
L = 33.57'	L = 37.97'	

- NOTES:
- TOTAL PLATTED AREA CONTAINS 7.345 ACRES OF LAND.
  - 5' SIDE YARD REQUIRED UNLESS OTHERWISE SHOWN ON PLAT.
  - SET 5/8 INCH IRON RODS AT ALL LOT CORNERS, EXCEPT WHERE NOTED.
  - BEARINGS BASED ON RECORDED PLAT OF NUECES COUNTY NAVIGATION DISTRICT SURVEY, ABSTRACT NO. 2684, CITY OF PORT ARANSAS, A MAP OF WHICH IS RECORDED IN VOLUME 455, PAGE 596, DEED RECORDS OF NUECES COUNTY, TEXAS.
  - THE COMBINED R.O.W. OF THE PRIVATE STREET SHALL BE DESIGNATED LOT 9, CONTAINING 42,453.8 SQ.FT.
  - CAMPANILLA INVESTMENTS, IN RECORDING THIS PLAT OF PORPOISE POINT N.U.D., HAS DEDICATED ALL LAND, SAVE AND EXCEPT LOTS 1 THRU 4, LOTS 6 THRU 14, BLOCK 1, AND LOTS 1-8, BLOCK 2, AS COMMON SPACE TO THE PORPOISE POINT HOMEOWNER'S ASSOCIATION.
  - IT IS TO CERTIFY THAT I HAVE CONSULTED THE FEDERAL FLOOD HAZARD MAP DATED SEPTEMBER 30, 1992, AND FOUND THAT THE PROPERTY DESCRIBED HEREIN IS LOCATED IN A SPECIAL FLOOD HAZARD AREA, ZONE (SEE MAP), BASE FLOOD ELEVATION (SEE MAP), COMUNITY PANEL NUMBER 485498 0003F.

STATE OF TEXAS  
COUNTY OF NUECES  
CAMPANILLA INVESTMENTS, GENERAL PARTNER, HEREBY CERTIFIES THAT IT IS THE OWNER OF THE LANDS EMBRACED WITHIN THE BOUNDARIES OF THE FOREGOING PLAT; THAT IT HAS HAD SAID LANDS SURVEYED AND SUBDIVIDED AS SHOWN; THAT STREETS SHOWN ARE DEDICATED TO THE PUBLIC USE FOREVER; THAT EASEMENTS AS SHOWN ARE DEDICATED TO THE PUBLIC USE FOR THE INSTALLATION, OPERATION AND USE OF PUBLIC UTILITIES; AND THAT THIS MAP WAS MADE FOR THE PURPOSE OF DESCRIPTION AND DEDICATION.

THIS THE 14<sup>th</sup> DAY OF October, 1998

CAMPANILLA INVESTMENTS, GENERAL PARTNER  
Melvin M. Littleton  
MELVIN M. LITTLETON, PARTNER

STATE OF TEXAS  
COUNTY OF NUECES  
THIS INSTRUMENT WAS ACKNOWLEDGED BEFORE ME BY MELVIN M. LITTLETON, PARTNER OF CAMPANILLA INVESTMENTS.

THIS THE 14<sup>th</sup> DAY OF October, 1998

Stephen Thompson  
NOTARY PUBLIC IN AND FOR THE STATE OF TEXAS

