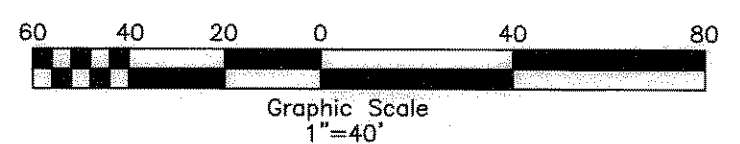
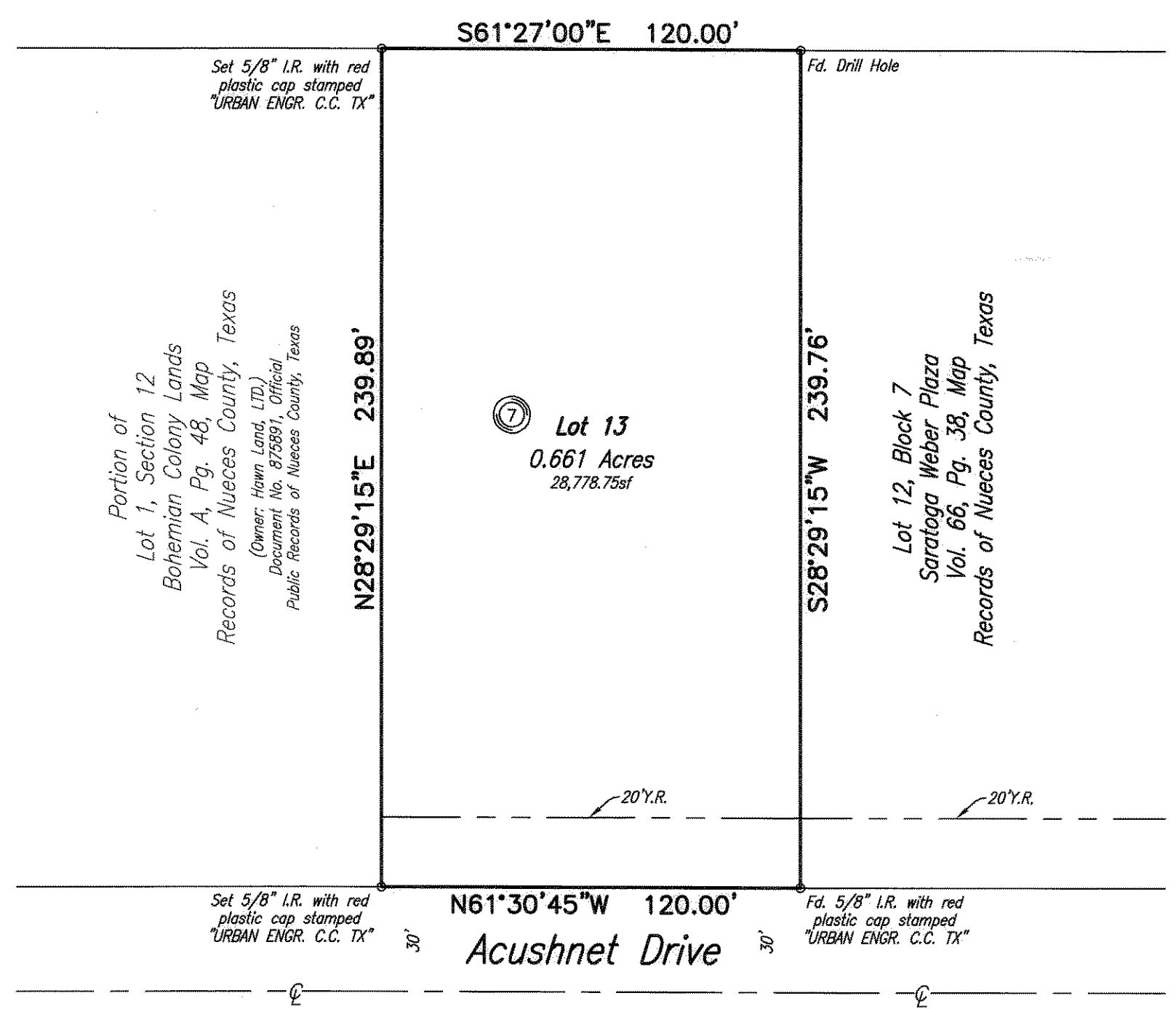


Lot 3, Block 7
Saratoga Weber Plaza
Vol. 62, Pg. 22, Map
Records of Nueces County, Texas



Plat of
Saratoga Weber Plaza
Block 7, Lot 13

0.661 acres of land out of Lot 1, Section 12, Bohemian Colony Lands, a map of which is recorded in Volume A, Page 48, Map Records of Nueces County, Texas.

State of Texas
County of Nueces

SHELL LAND MANAGEMENT COMPANY, INC., a Texas Corporation, hereby certifies that it is the owner of the lands embraced within the boundaries of the foregoing plat; that it has had said lands surveyed and subdivided as shown; that streets shown are dedicated to the public use forever; that easements as shown are dedicated to the public use for the installation, operation and use of public utilities; and that this map was made for the purpose of description and dedication.

This the 21st day of November, 2006.

By: SHELL LAND MANAGEMENT COMPANY, INC., a Texas Corporation

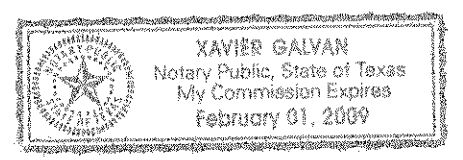
By: [Signature]
JOHN WALLACE, Vice-President

State of Texas
County of Nueces

This instrument was acknowledged before me by JOHN WALLACE, as Vice-President of SHELL LAND MANAGEMENT COMPANY, INC., a Texas Corporation, on behalf of said corporation.

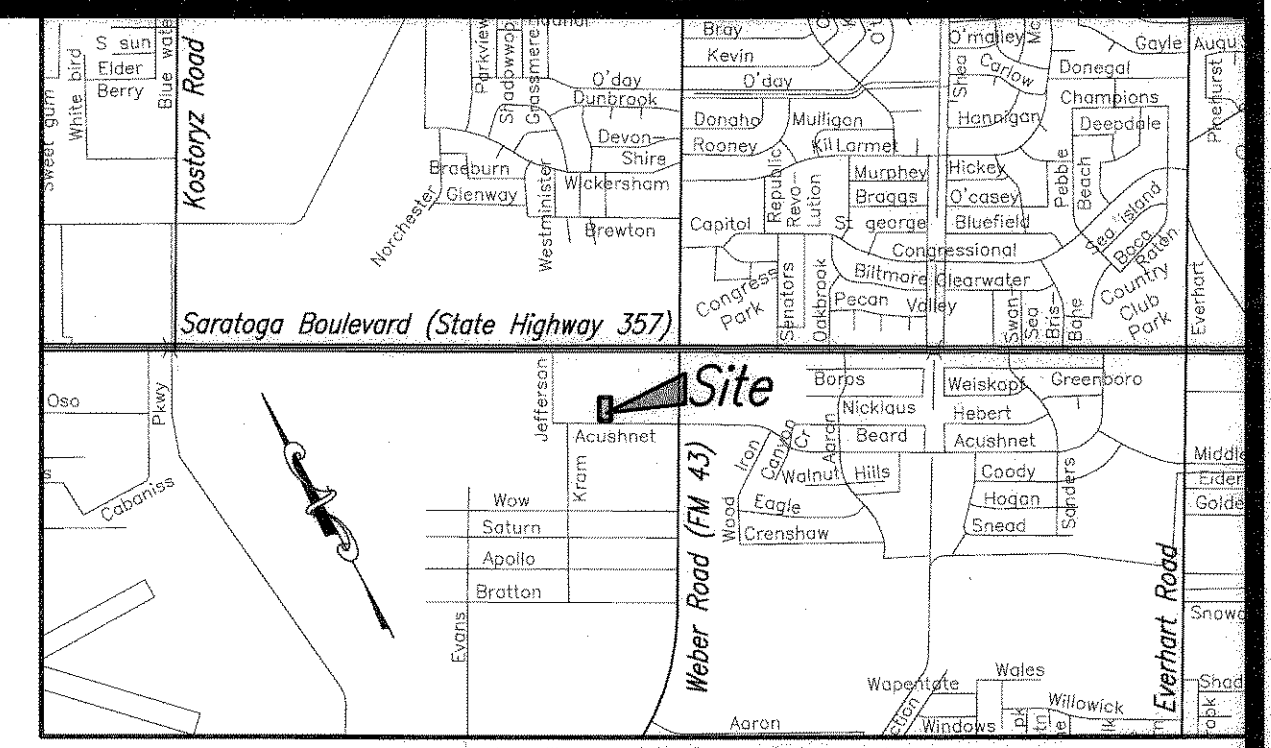
This the 21st day of November, 2006.

[Signature]
Notary Public in and for the State of Texas



Notes:

- 1.) Total platted area contains 0.661 acres of land.
- 2.) Set 5/8 inch iron rods with red plastic cap stamped "URBAN ENGR C.C. TX" at all Lot corners, except where noted.
- 3.) The receiving waters for storm water runoff is the Oso Creek Basin. The TCEQ has not classified the aquatic life use for the Oso Creek, but it is recognized as an environmentally sensitive area. The Oso Creek flows directly into the Oso Bay. The TCEQ has classified the aquatic life use for Oso Bay as "exceptional" and "oyster waters" and categorized the receiving water as "contact recreation" use.
- 4.) Bearings are based on the recorded plat of Saratoga Weber Plaza, Block 11, Lot 7, a map of which is recorded in Volume 65, Page 148, Map Records of Nueces County, Texas.
- 5.) By graphic plotting only, this property is in Zone "C" on Flood Insurance Rate Map, Community Panel No. 485464 0283 C, City of Corpus Christi, Texas, which bears an effective date of July 18, 1985 and is not in a Special Flood Hazard Area.
- 6.) If any lot develops with residential uses, a park settlement fee will be assessed during the permitting phase of the development.



State of Texas
County of Nueces

I, Juan J. Salazar, a Registered Professional Land Surveyor for Urban Engineering, have prepared the foregoing map from a survey made on the ground under my direction and is true and correct to the best of my knowledge, information and belief; I have been engaged under contract to set all Lot and Block corners as shown hereon and to complete such operations with due and reasonable diligence consistent with sound professional practice.

This the 21st day of November, 2006

[Signature]
Juan J. Salazar, R.P.L.S.
Texas License No. 4909



State of Texas
County of Nueces

This final plat of the herein described property was approved by the Department of Development Services of the City of Corpus Christi, Texas.

This the 28 day of NOVEMBER, 2006

[Signature]
Mary Frances Teniente, P.E.
Development Services Engineer

State of Texas
County of Nueces

This final plat of the herein described property was approved on behalf of the City of Corpus Christi, Texas by the Planning Commission.

This the 15th day of NOVEMBER, 2006

[Signature] [Signature]
Faryce Goode-Macon Secretary
R. Bryan Stone, Chairman

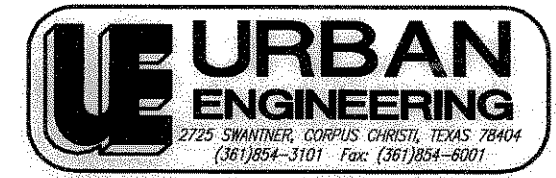
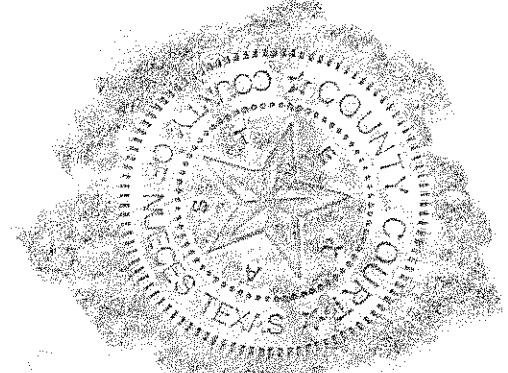
State of Texas
County of Nueces

I, Diana T. Barrera, Clerk of the County Court in and for said County, do hereby certify that the foregoing instrument dated the 28 day of NOVEMBER, 2006, with its certificate of authentication was filed for record in my office the 28 day of NOVEMBER, 2006, at 12:06 O'clock P.M., and duly recorded the 28 day of NOVEMBER, 2006, at 12:06 O'clock P.M. in said County in Volume 66, Page 54, Map Records.

Witness my hand and seal of the County Court, in and for said County, at office in Corpus Christi, Texas, the day and year last written.

No. 2006060567
Filed for Record
at 12:06 O'clock P.M.
November 28, 2006

[Signature]
Diana T. Barrera, County Clerk
Nueces County, Texas
By: [Signature]
Deputy



DATE: Oct. 27, 2006
SCALE: 1"=40'
JOB NO.: 23775.A6.02
SHEET: 1 of 1
DRAWN BY: XG
© 2006 by Urban Engineering

Vol. 66 Pg 54