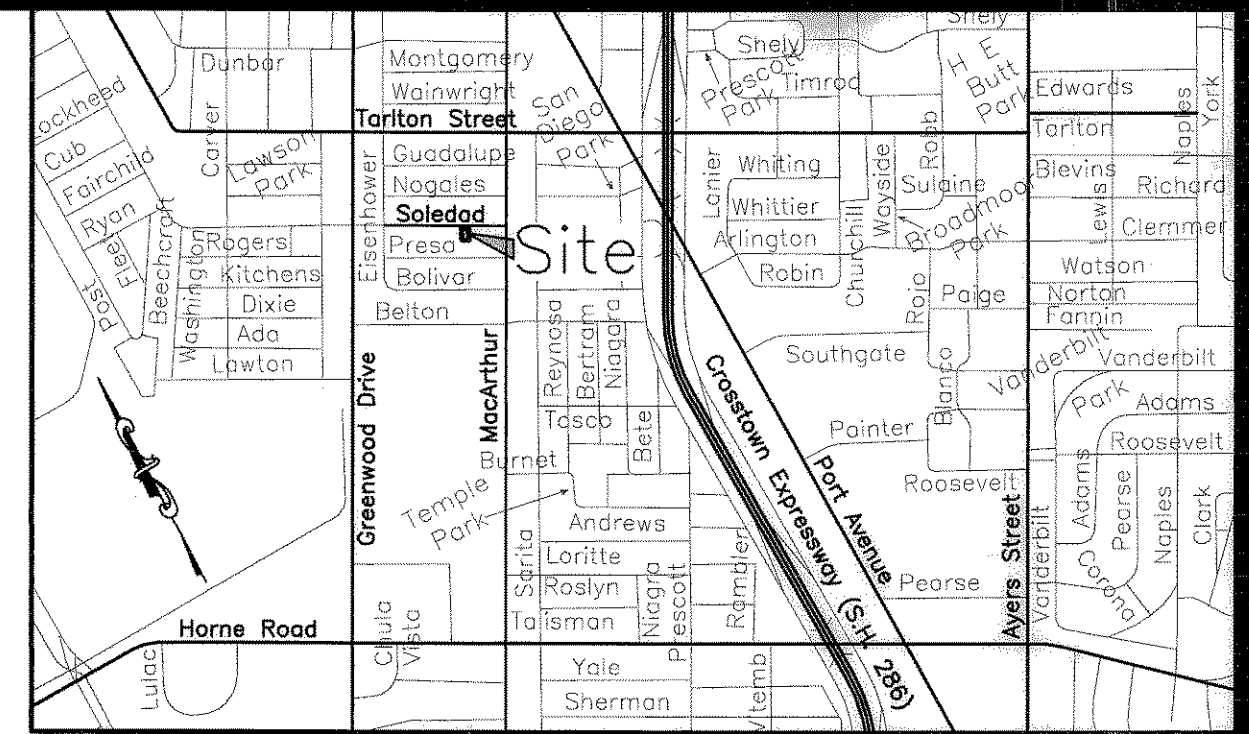
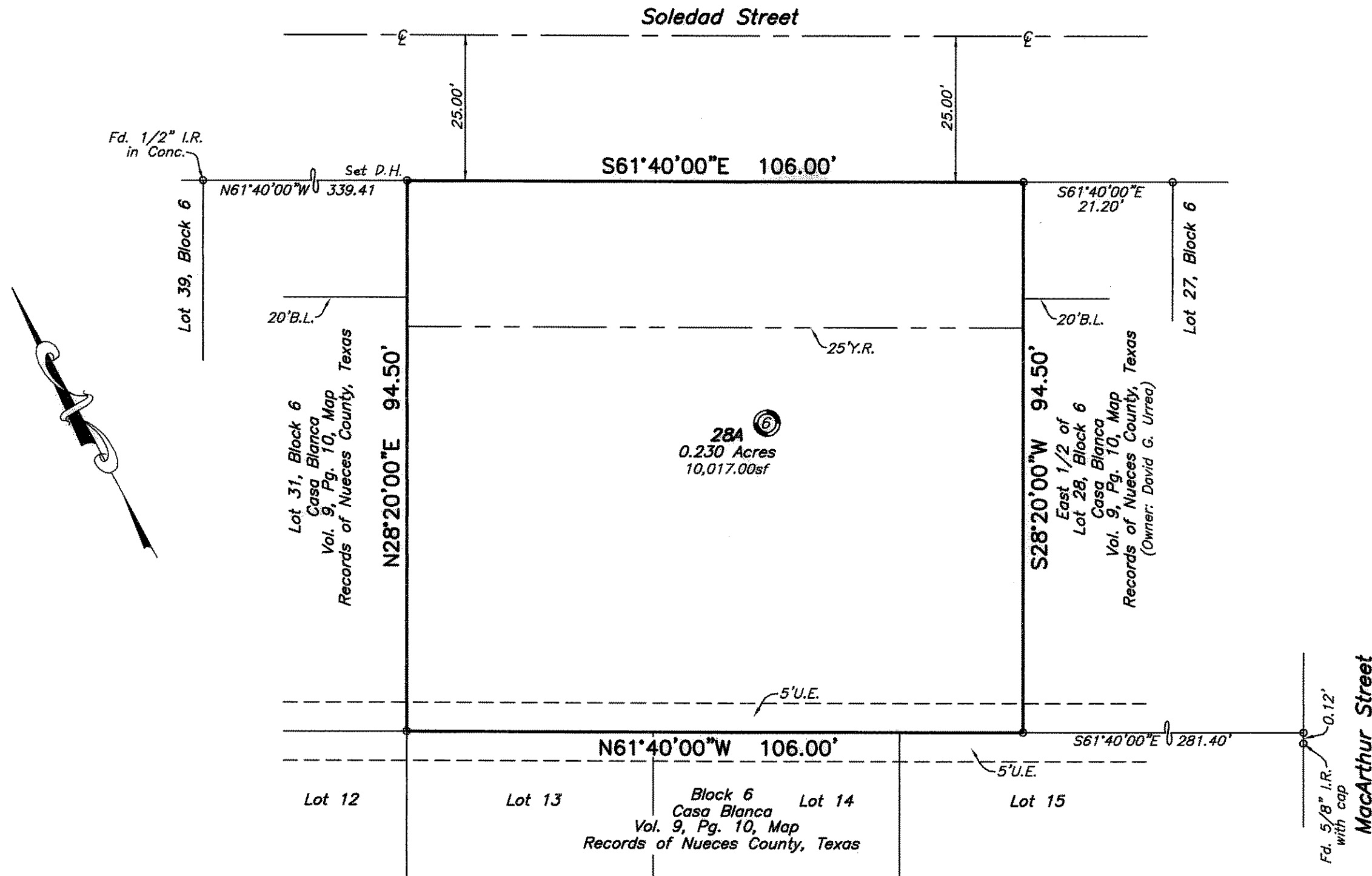


Notes:

- 1.) Total platted area contains 0.230 acres of land.
- 2.) Set 5/8 inch iron rods with red plastic cap stamped "URBAN ENGR C.C. TX" at all Lot corners, except where noted.
- 3.) The receiving water for storm water runoff is the Corpus Christi Bay. The TCEQ has classified the aquatic life use for the Corpus Christi Bay as "exceptional" and "oyster waters" and also categorized the Corpus Christi Bay as "contact recreation" use.
- 4.) Bearings are based on the recorded plat of Casa Blanca, a map of which is recorded in Volume 9, Page 10, Map Records of Nueces County, Texas.
- 5.) By graphic plotting only, this property is in Zone "C" on Flood Insurance Rate Map, Community Panel No. 485464 0168 C, City of Corpus Christi, Texas, which bears an effective date of July 18, 1985 and is not in a Special Flood Hazard Area.



LOCATION MAP N.T.S.



State of Texas
County of Nueces

I, Dan L. Urban, a Registered Professional Land Surveyor for Urban Engineering, have prepared the foregoing map from a survey made on the ground under my direction and is true and correct to the best of my knowledge, information and belief; I have been engaged under contract to set all Lot and Block corners as shown hereon and to complete such operations with due and reasonable diligence consistent with sound professional practice.

This the 12TH day of NOVEMBER, 2007

Dan L. Urban
Dan L. Urban, R.P.L.S.
Texas License No. 4710



State of Texas
County of Nueces

This final plat of the herein described property was approved by the Department of Development Services of the City of Corpus Christi, Texas.

This the 21ST day of November, 2007

Juan Perales, Jr.
Juan Perales, Jr., P.E.
Development Services Engineer

State of Texas
County of Nueces

This final plat of the herein described property was approved on behalf of the City of Corpus Christi, Texas by the Director of Planning.

This the 21ST day of NOVEMBER, 2007

Faryce Goode-Macon
Faryce Goode-Macon
Acting Assistant Director of Planning
1107147-NPD98A30

State of Texas
County of Nueces

I, Diana T. Barrera, Clerk of the County Court in and for said County, do hereby certify that the foregoing instrument dated the 16TH day of November, 2007, with its certificate of authentication was filed for record in my office the 21ST day of NOVEMBER, 2007, at 3:32 O'clock P.M., and duly recorded the 21ST day of November, 2007, at 3:32 O'clock P.M., in said County in Volume 67, Page 68, Map Records.

Witness my hand and seal of the County Court, in and for said County, at office in Corpus Christi, Texas, the day and year last written.

No. 2007058517
Filed for Record
at 3:32 O'clock P.M.
November 21, 2007

Diana T. Barrera
Diana T. Barrera, County Clerk
Nueces County, Texas
By: *Edwina Ramirez*
Deputy

State of Texas
County of Nueces

The Most Reverend Edmond Carmody, D.D., Bishop of the Diocese of Corpus Christi, a Corporate Sole, and his successors in office, hereby certifies that it is the owner of the lands embraced within the boundaries of the foregoing plat; that it has had said lands surveyed and subdivided as shown; that streets shown are dedicated to the public use forever; that easements as shown are dedicated to the public use for the installation, operation and use of public utilities; and that this map was made for the purpose of description and dedication.

This the 16TH day of November, 2007

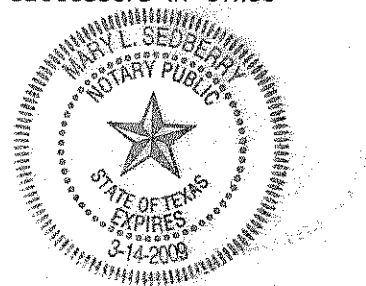
By: *Edmond Carmody*
The Most Reverend Edmond Carmody, D.D., Bishop of the Diocese of Corpus Christi, a Corporate Sole, and his successors in office

State of Texas
County of Nueces

This instrument was acknowledged before me by The Most Reverend Edmond Carmody, D.D., Bishop of the Diocese of Corpus Christi, a Corporate Sole, and his successors in office

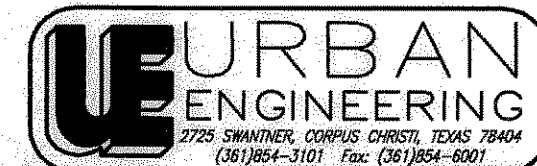
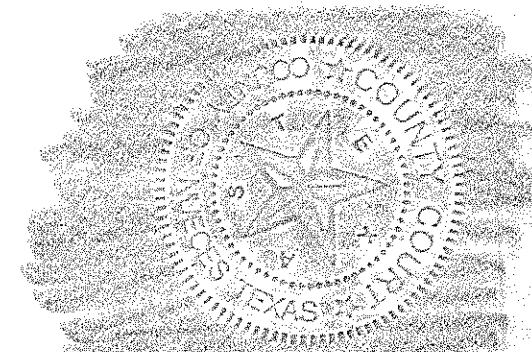
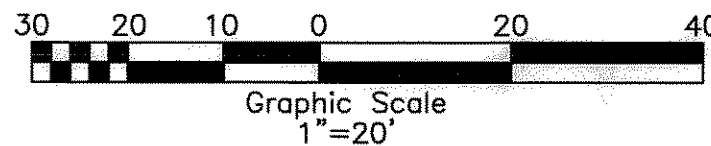
This the 16TH day of November, 2007

Mary L. Sullivan
Notary Public in and for the State of Texas



**Plat of
Casa Blanca
Block 6, Lot 28A**

being a replat of the west 1/2 of Lot 28 and all of Lots 29 and 30, Block 6, Casa Blanca, a map of which is recorded in Volume 9, Page 10, Map Records of Nueces County, Texas.



DATE: October 26, 2007
SCALE: 1"=20'
JOB NO.: 41309.00.00
SHEET: 1 of 1
DRAWN BY: XG