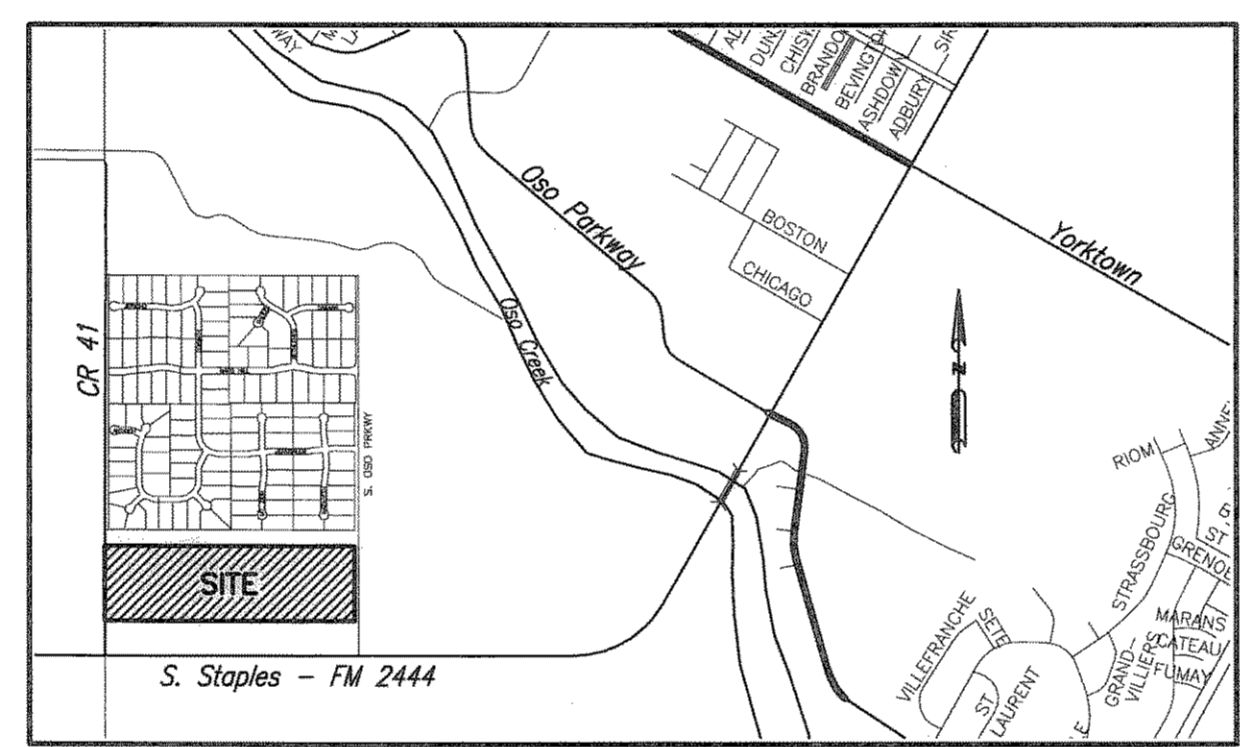


Amending Plat of Country Creek Unit 6

Being an amending plat of Country Creek Unit 6, a map of which is recorded in Volume 64, Pages 227 and 228, Map Records of Nueces County, Texas, same being the 46.531 acres of land out of the south half of Section A and the north half of Section 31, Laureles Farm Tracts, a map of which is recorded in Volume 3, Page 15, Map Records of Nueces County, Texas.



LOCATION MAP N.T.S.

State of Texas
County of Nueces

I, Juan J. Salazar, a Registered Professional Land Surveyor for Urban Engineering, have prepared the foregoing map from a survey made on the ground under my direction and is true and correct to the best of my knowledge, information and belief; I have been engaged under contract to set all Lot and Block corners as shown hereon and to complete such operations with due and reasonable diligence consistent with sound professional practice.

This the 7th day of September, 2005

Juan J. Salazar
Juan J. Salazar, R.P.L.S.
Texas License No. 4909



State of Texas
County of Nueces

This final plat of the herein described property was approved by the Department of Engineering Services of the City of Corpus Christi, Texas.

This the 18th day of Oct, 2005

Angel R. Escobar, P.E.
Angel R. Escobar, P.E./R.P.L.S.
Director of Engineering Services

State of Texas
County of Nueces

This final plat of the herein described property was approved on behalf of the City of Corpus Christi, Texas by the Director of Planning.

This the 18th day of OCTOBER, 2005

Michael N. Gunning, A.I.C.P.
Michael N. Gunning, A.I.C.P.
Director of Planning

State of Texas
County of Nueces

I, Diana T. Barrera, Clerk of the County Court in and for said County, do hereby certify that the foregoing instrument dated the 13th day of October, 2005, with its certificate of authentication was filed for record in my office the 18th day of October, 2005. At 1:53 O'clock P.M., and duly recorded the 18th day of October, 2005, at 1:53 O'clock P.M., in said County in Volume 64, Page 250-251, Map Records.

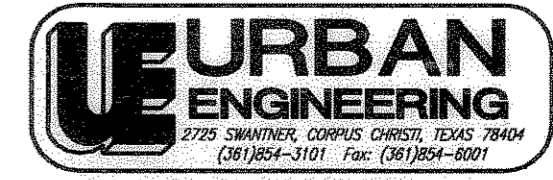
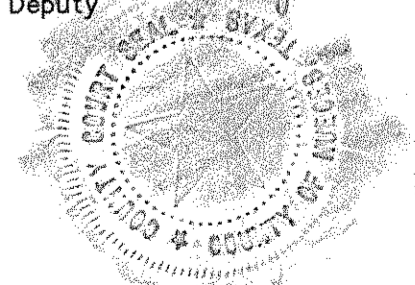
Witness my hand and seal of the County Court, in and for said County, at office in Corpus Christi, Texas, the day and year last written.

No. 2005054187
Filed for Record
at 1:53 O'clock P.M.
October 18, 2005

Diana T. Barrera
Diana T. Barrera, County Clerk
Nueces County, Texas
By: Ramela B. Arriaga
Deputy

Diana T. Barrera
Clerk County Court
Nueces County, Texas

Ramela B. Arriaga
Deputy



DATE: Sept. 7, 2005
SCALE: 1" = 200'
JOB NO.: 20492.06.00
SHEET: 1 OF 2
DRAWN BY: RR

State of Texas
County of Nueces

I, GENE GRAHAM, hereby certify that I am the owner of the lands embraced within the boundaries of the foregoing plat; that I have had said lands surveyed and subdivided as shown; that streets shown are dedicated to the public use forever; that easements as shown are dedicated to the public use for the installation, operation and use of public utilities; and that this map was made for the purpose of description and dedication.

This the 13th day of October, 2005

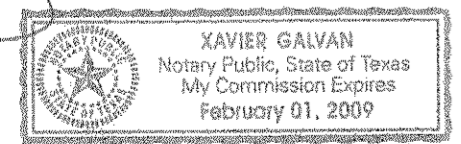
Gene Graham
GENE GRAHAM

State of Texas
County of Nueces

This instrument was acknowledged before me by GENE GRAHAM.

This the 13th day of October, 2005

Xavier Galvan
Notary Public, in and for the State of Texas



State of Texas
County of Nueces

This final plat approved by the Corpus Christi Nueces County Health Unit, any private water supply and/or sewage system shall be approved by the Corpus Christi-Nueces County Health Department prior to installation.

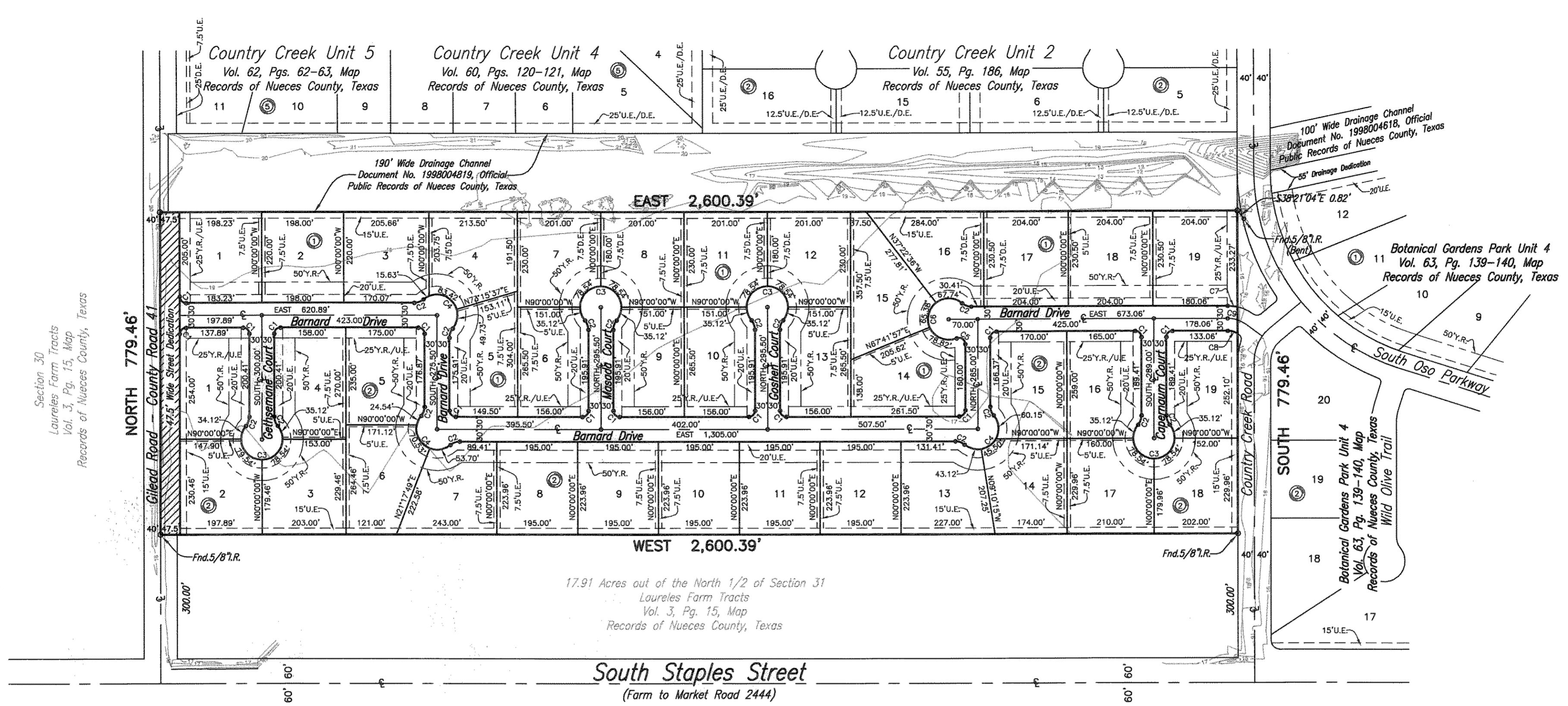
This the 13 day of October, 2005

Lawrence A. Jones
Lawrence A. Jones, R.S. Manager
Public Health Engineer
Corpus Christi, Nueces County, Texas

Notes:

- 1.) Total platted area contains 46.531 acres of land.
- 2.) Set 5/8 inch iron rods with red plastic cap stamped "URBAN ENGR C.C. TX" at all Lot corners, except where noted.
- 3.) The receiving waters for storm water runoff is the Oso Creek Basin. The TCEQ has not classified the aquatic life use for the Oso Creek, but it is recognized as an environmentally sensitive area. The Oso Creek flows directly into the Oso Bay. The TCEQ has classified the aquatic life use for Oso Bay as "exceptional" and "oyster waters" and categorized the receiving water as "contact recreation" use.
- 4.) Bearings are based on the recorded plat of Country Creek Unit 5, a map of which is recorded in Volume 62, Pages 62-63, Map Records of Nueces County, Texas.
- 5.) By graphic plotting only, this property is in Zone "B" on Flood Insurance Rate Map, Community Panel No. 485494 0520 D, Nueces County, Texas, which bears an effective date of June 4, 1987 and is not in a Special Flood Hazard Area.
- 6.) No driveway access to permitted along County Road 41 and South Oso Parkway.
- 7.) Country Creek Unit 6 Architectural Control Committee and the individual property owners are jointly and severally responsible for maintenance of open ditches within drainage easements and/or within the street right-of-ways. The City shall pay no expense on any future improvements relating to underground storm sewer curb and gutter, sidewalks and wastewater systems.

Vol. 64 pg: 250



Section 30
Laureles Farm Tracts
Vol. 3, Pg. 15, Map
Records of Nueces County, Texas

Country Creek Unit 5
Vol. 62, Pgs. 62-63, Map
Records of Nueces County, Texas

Country Creek Unit 4
Vol. 60, Pgs. 120-121, Map
Records of Nueces County, Texas

Country Creek Unit 2
Vol. 55, Pg. 186, Map
Records of Nueces County, Texas

100' Wide Drainage Channel
Document No. 1998004618, Official
Public Records of Nueces County, Texas

Botanical Gardens Park Unit 4
Vol. 63, Pg. 139-140, Map
Records of Nueces County, Texas

17.91 Acres out of the North 1/2 of Section 31
Laureles Farm Tracts
Vol. 3, Pg. 15, Map
Records of Nueces County, Texas

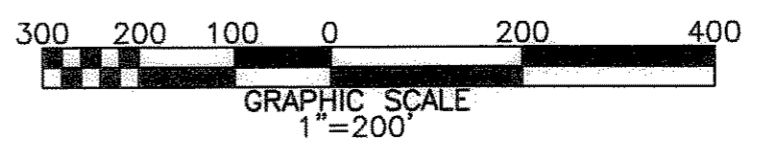


LOT	BLOCK	AREA LOT
1	1	43,561.62SF
2	1	43,560.00SF
3	1	45,019.02SF
4	1	45,180.97SF
5	1	45,077.59SF
6	1	44,769.42SF
7	1	44,266.50SF
8	1	44,266.50SF
9	1	44,769.42SF
10	1	44,769.42SF
11	1	44,266.50SF
12	1	44,266.50SF
13	1	44,769.42SF
14	1	50,059.64SF
15	1	45,524.16SF
16	1	44,114.03SF
17	1	47,022.00SF
18	1	47,022.00SF
19	1	47,043.97SF
1	2	44,500.44SF
2	2	43,591.98SF
3	2	44,617.37SF
4	2	46,078.92SF
5	2	44,225.04SF
6	2	43,590.60SF
7	2	43,774.30SF
8	2	43,672.66SF
9	2	43,672.66SF
10	2	43,672.66SF
11	2	43,672.66SF
12	2	43,672.66SF
13	2	46,080.38SF
14	2	43,624.44SF
15	2	46,851.74SF
16	2	45,988.92SF
17	2	46,328.60SF
18	2	44,488.90SF
19	2	43,863.63SF

Notes:

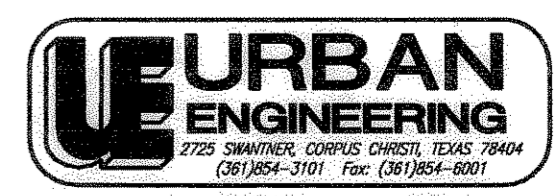
- Total platted area contains 46.531 acres of land.
- Set 5/8 inch iron rods with red plastic cap stamped "URBAN ENGR C.C. TX" at all Lot corners, except where noted.
- The receiving waters for storm water runoff is the Oso Creek Basin. The TCEQ has not classified the aquatic life use for the Oso Creek, but it is recognized as an environmentally sensitive area. The Oso Creek flows directly into the Oso Bay. The TCEQ has classified the aquatic life use for Oso Bay as "exceptional" and "oyster waters" and categorized the receiving water as "contact recreation" use.
- Bearings are based on the recorded plat of Country Creek Unit 5, a map of which is recorded in Volume 62, Pages 62-63, Map Records of Nueces County, Texas.
- By graphic plotting only, this property is in Zone "B" on Flood Insurance Rate Map, Community Panel No. 485494 0520 D, Nueces County, Texas, which bears an effective date of June 4, 1987 and is not in a Special Flood Hazard Area.
- No driveway access to permitted along County Road 41 and South Oso Parkway.
- Country Creek Unit 6 Architectural Control Committee and the individual property owners are jointly and severally responsible for maintenance of open ditches within drainage easements and/or within the street right-of-ways. The City shall pay no expense on any future improvements relating to underground storm sewer curb and gutter, sidewalks and wastewater systems.

CURVE	DELTA ANGLE	RADIUS	TANGENT	ARC LENGTH
C1	90°00'00"	15.00'	15.00'	23.56'
C2	40°14'34"	34.50'	12.64'	24.23'
C3	260°29'08"	50.00'	59.08'	227.32'
C4	170°29'08"	50.00'	600.82'	148.78'
C5	112°37'12"	15.00'	22.50'	29.48'
C6	242°51'46"	50.00'	81.81'	211.94'
C7	13°11'06"	104.98'	12.13'	24.16'
C8	32°10'03"	44.98'	12.97'	25.25'
C9	18°37'29"	74.98'	12.29'	24.37'



Amending Plat of Country Creek Unit 6

Being an amending plat of Country Creek Unit 6, a map of which is recorded in Volume 64, Pages 227 and 228, Map Records of Nueces County, Texas, same being the 46.531 acres of land out of the south half of Section A and the north half of Section 31, Laureles Farm Tracts, a map of which is recorded in Volume 3, Page 15, Map Records of Nueces County, Texas.



DATE: Sept. 7, 2005
SCALE: 1" = 200'
JOB NO.: 20492.06.00
SHEET: 2 OF 2
DRAWN BY: RR

Vol:64 Pg:251