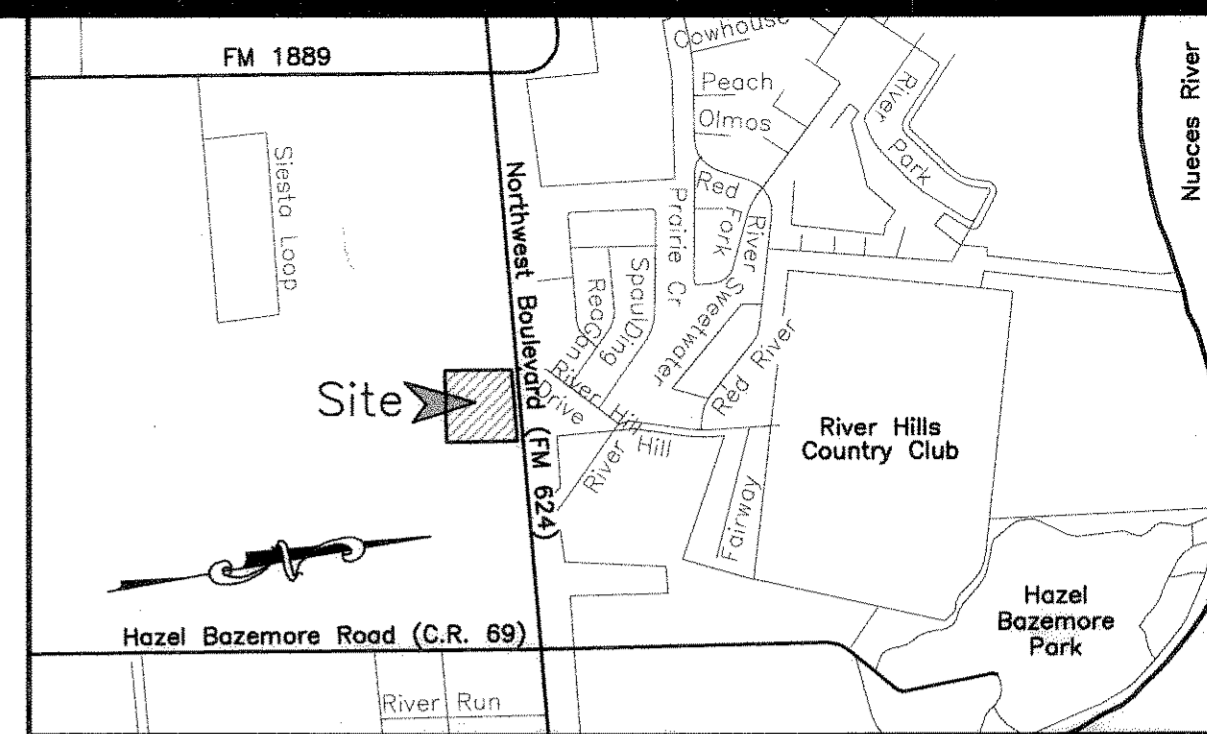


Notes:

- 1.) Total platted area contains 6.862 acres of land. (Includes Street Dedication)
- 2.) Set 5/8 inch iron rods with red plastic cap stamped "URBAN ENGR C.C. TX" at all Lot corners, except where noted.
- 3.) The receiving waters for storm water runoff is the Nueces River upstream of the Calallen Salt Water Intrusion Dam located 1.1 miles from Nueces Bay. The TCEQ has classified the aquatic life use for this segment of the Nueces River as "high" and TCEQ also categorized the Nueces River as "contact recreation" use. Additional water quality protection measures must be observed for this receiving water due to the TCEQ designated as a "public water supply".
- 4.) Bearings based on the recorded plat of Nueces River Irrigation Park, a map of which is recorded in Volume A, Page 54, Map Records of Nueces County, Texas.
- 5.) By graphic plotting only, this property is in Zone "C" of the Flood Insurance Rate Map, Community Panel Number 485494 0257 C, City of Corpus Christi, Texas, which bears an effective date of March 18, 1985 and is not in a Special Flood Hazard Area.
- 6.) The private drainage easement and detention pond will be maintained by the owner of Lot 2A.
- 7.) All property within the boundary of this plat is subject to a Sanitary Sewer Connection Agreement recorded with the plat and executed by the owner and the City of Corpus Christi. (Document No. 2009046895, O.R.N.C.T.)

Plat of
Nueces River Irrigation Park
Block 2, Lot 2A

6.862 acres out of Lot 2, Block 2, Nueces River Irrigation Park, a map of which is recorded in Volume A, Page 54, Map Records of Nueces County, Texas.



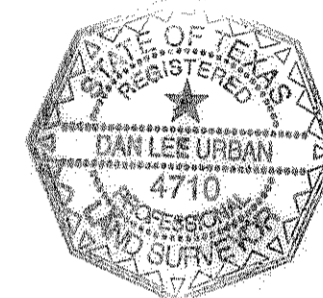
LOCATION MAP N.T.S.

State of Texas
County of Nueces

I, Dan L. Urban, a Registered Professional Land Surveyor for Urban Engineering, have prepared the foregoing map from a survey made on the ground under my direction and is true and correct to the best of my knowledge, information and belief; I have been engaged under contract to set all Lot and Block corners as shown herein and to complete such operations with due and reasonable diligence consistent with sound professional practice.

This the 17th day of NOVEMBER, 2009

Dan L. Urban
Dan L. Urban, R.P.L.S.
Texas License No. 4710



State of Texas
County of Nueces

This final plat of the herein described property was approved by the Department of Development Services of the City of Corpus Christi, Texas.

This the 6th day of JANUARY, 2010

Juan Perales Jr.
Juan Perales, Jr., P.E.
Development Services Engineer

State of Texas
County of Nueces

This final plat of the herein described property was approved on behalf of the City of Corpus Christi, Texas by the Planning Commission.

This the 10th day of JUNE, 2009

Faryce Goode-Macon *Rudy Garza*
Faryce Goode-Macon Rudy Garza, Chairman
Secretary 0609022-P006 (09-22000005)

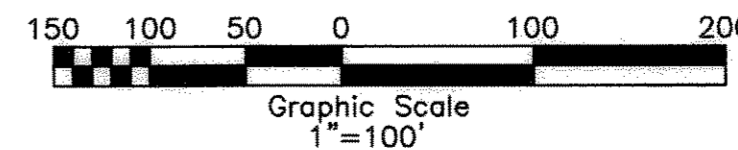
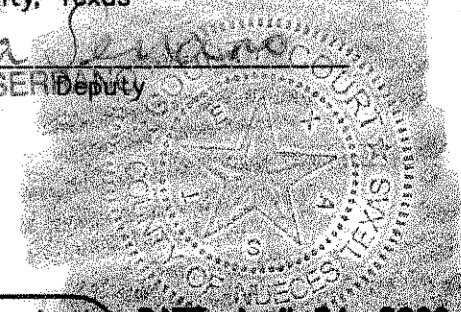
State of Texas
County of Nueces

I, Diana T. Barrera, Clerk of the County Court in and for said County, do hereby certify that the foregoing instrument dated the 6th day of JANUARY, 2010, with its certificate of authentication was filed for record in my office the 6th day of JANUARY, 2010 at 3:15 O'clock P.M., and duly recorded the 6th day of JANUARY, 2010, at 3:15 O'clock P.M., in said County in Volume 67, Page 355, Map Records.

Witness my hand and seal of the County Court, in and for said County, at office in Corpus Christi, Texas, the day and year last written.

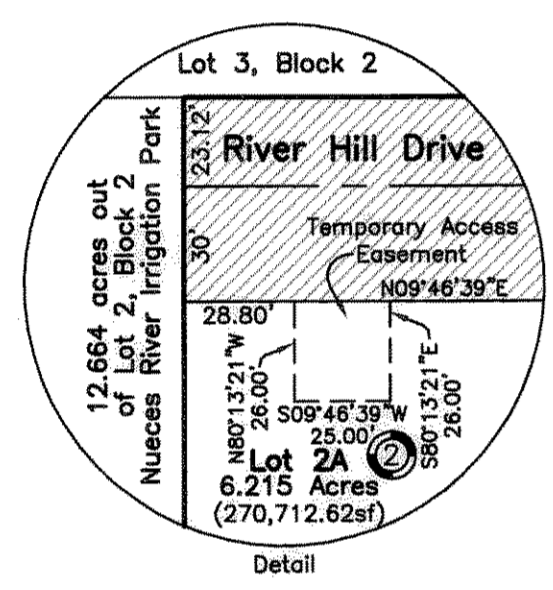
No. 2010000399
Filed for Record
at 3:15 O'clock P.M.
JANUARY 6, 2010

Diana T. Barrera
Diana T. Barrera, County Clerk
Nueces County, Texas
By: *Sylvia Serber*
SYLVIA SERBER Deputy

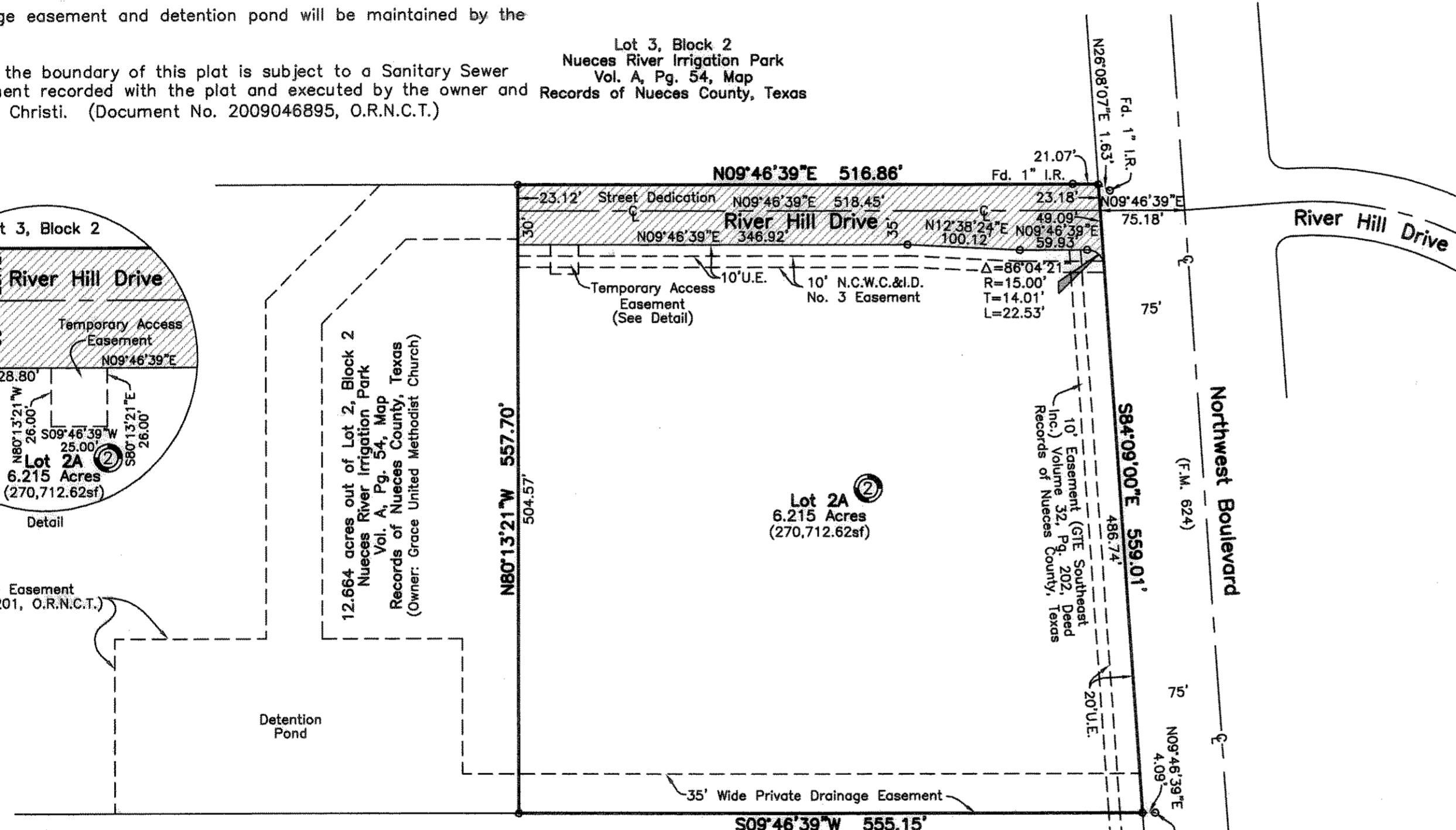


URBAN ENGINEERING
2729 SWINTNER, CORPUS CHRISTI, TEXAS 78404
(361)854-3101 Fax: (361)854-6001

DATE: April 24, 2009
SCALE: 1"=100'
JOB NO.: 32318.A9.01
SHEET: 1 of 1
DRAWN BY: XG



Private Drainage Easement
(Doc. No. 2009051201, O.R.N.C.T.)



State of Texas
County of Nueces

Grace United Methodist Church, hereby certifies that it is the owner of the lands embraced within the boundaries of the foregoing plat; that it has had said lands surveyed and subdivided as shown; that streets shown are dedicated to the public use forever; that easements as shown are dedicated to the public use for the installation, operation and use of public utilities; and that this map was made for the purpose of description and dedication.

5 acres out of Lot 2, Block 2
Nueces River Irrigation Park
Vol. A, Pg. 54, Map
Records of Nueces County, Texas
(Owner: John J. and Gertrude Vicknair)

This the 5 day of November, 2009

By: *Richard Shirley*
Richard Shirley, Board of Trustees Chairman

State of Texas
County of Nueces

This instrument was acknowledged before me by Richard Shirley, as the Board of Trustees Chairman of Grace United Methodist Church.

This the 5 day of November, 2009

Dannette Ott
DANNETTE OTT
Notary Public, State of Texas
My Commission Expires 01-21-2012

State of Texas
County of Nueces

This final plat approved by the Corpus Christi Nueces County Health Unit, any private water supply and/or sewage system shall be approved by the Corpus Christi-Nueces County Health Department prior to installation.

This the 17 day of November, 2009

Ray D. King

VOL. 67 PG 355