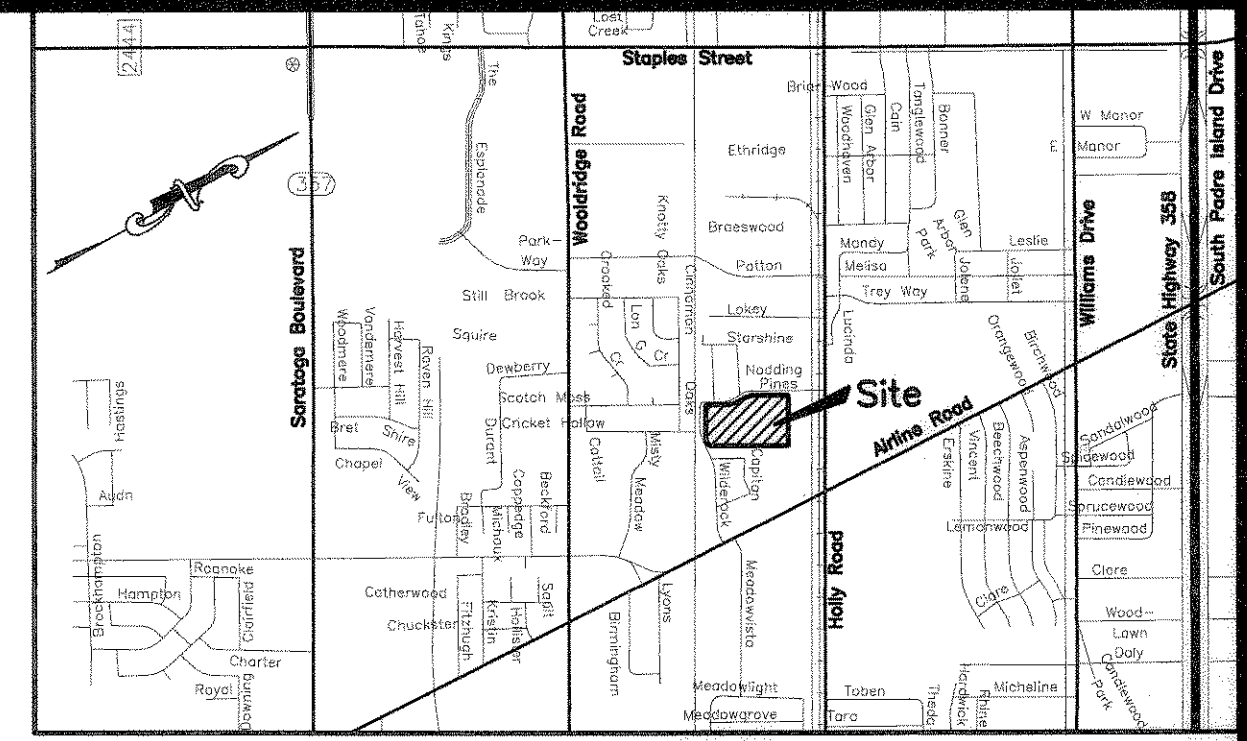


Plat of Wooldridge Creek Unit 8 Block 1, Lots 1A and 1B

20.750 acres of land being a portion of Lot 1, Block 1, Wooldridge Creek Unit 8, a map of which is recorded in Volume 50, Page 100, Map Records of Nueces County, Texas and a portion of Lots 6 and 7, Section 12, Flour Bluff and Encinal Farm and Garden Tracts, a map of which is recorded in Volume A, Pages 41-43, Map Records of Nueces County, Texas.



LOCATION MAP N.T.S.

State of Texas
County of Nueces

The Morris L. Lichtenstein, Jr. Medical Research Foundation, hereby certifies that it is the owner of Lot 1B as shown on the foregoing plat; that it has had said lands surveyed and subdivided as shown; that streets shown are dedicated to the public use forever; that easements as shown are dedicated to the public use for the installation, operation and use of public utilities; and that this map was made for the purpose of description and dedication.

This the 11th day of September, 2009.

By: Morris L. Lichtenstein, Jr. Medical Research Foundation

By: Charles W. Thomasson
Charles W. Thomasson, President

State of Texas
County of Nueces

This instrument was acknowledged before me by Charles W. Thomasson, as President of the Morris L. Lichtenstein, Jr. Medical Research Foundation.

This the 11th day of September, 2009.

Kandice Walton
Notary Public in and for the State of Texas

State of Texas
County of Nueces

Corpus Christi Athletic Club Inc., hereby certifies that it is the owner of the lands embraced within the boundaries of Lot 1A as shown on the foregoing plat; that it has had said lands surveyed and subdivided as shown; that streets shown are dedicated to the public use forever; that easements as shown are dedicated to the public use for the installation, operation and use of public utilities; and that this map was made for the purpose of description and dedication.

This the 11th day of September, 2009.

By: Corpus Christi Athletic Club Inc.

By: Charles W. Thomasson
Charles W. Thomasson, Chairman/CEO

State of Texas
County of Nueces

This instrument was acknowledged before me by Charles W. Thomasson, as Chairman/CEO of Corpus Christi Athletic Club Inc.

This the 11th day of September, 2009.

Kandice Walton
Notary Public in and for the State of Texas

State of Texas
County of Nueces

American Bank, N.A., hereby certifies that it holds a lien on the property owned by Corpus Christi Athletic Club Inc., as shown on the foregoing map and it approves of the subdivision and dedication for the purposes and considerations therein expressed.

This the 11 day of September, 2009.

By: American Bank, N.A.

By: Patsy Boone
Patsy Boone, Senior Lending Officer

State of Texas
County of Nueces

This instrument was acknowledged before me by Patsy Boone, as Senior Lending Officer of American Bank, N.A.

This the 11th day of September, 2009.

Kandice Walton
Notary Public in and for the State of Texas

Notes:

- 1.) Total platted area contains 20.750 acres of land.
- 2.) Set 5/8 inch iron rods with red plastic cap stamped "URBAN ENGR C.C. TX" at all Lot corners, except where noted.
- 3.) The receiving water for storm water runoff is the Oso Bay Basin. The TCEQ has classified the aquatic life use for the Oso Bay as "exceptional" and "oyster waters" and also categorized the receiving water as "contact recreation" use.
- 4.) Bearings are based on the recorded plat of Lot 1, Block 1, Wooldridge Creek Unit 8, a map of which is recorded in Volume 50, Page 100, Map Records of Nueces County, Texas.
- 5.) By graphic plotting only, this property is in Zone "C" on Flood Insurance Rate Map, Community Panel No. 485464 0303 C, City of Corpus Christi, Texas, which bears an effective date of July 18, 1985 and is not in a Special Flood Hazard Area.

State of Texas
County of Nueces

I, Juan J. Salazar, a Registered Professional Land Surveyor for Urban Engineering, have prepared the foregoing map from a survey made on the ground under my direction and is true and correct to the best of my knowledge, information and belief; I have been engaged under contract to set all Lot and Block corners as shown herein and to complete such operations with due and reasonable diligence consistent with sound professional practice.

This the 8th day of September, 2009.

Juan J. Salazar
Juan J. Salazar, P.L.S.
Texas License No. 4909



State of Texas
County of Nueces

This final plat of the herein described property was approved by the Department of Development Services of the City of Corpus Christi, Texas.

This the 17th day of September, 2009.

Juan Perales, Jr.
Juan Perales, Jr., P.E.
Development Services Engineer

State of Texas
County of Nueces

This final plat of the herein described property was approved on behalf of the City of Corpus Christi, Texas by the Planning Commission.

This the 24th day of JUNE, 2009.

Faryce Goode-Macon
Faryce Goode-Macon
Secretary
0409016-NP016 (09-21000007)

Rudy Garza
Rudy Garza, Chairman

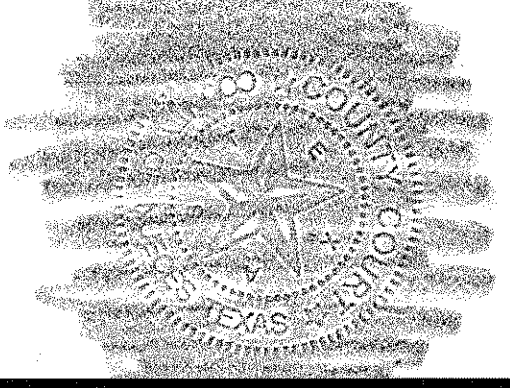
State of Texas
County of Nueces

I, Diana T. Barrera, Clerk of the County Court in and for said County, do hereby certify that the foregoing instrument dated the 11th day of September, 2009, with its certificate of authentication was filed for record in my office the 17th day of September, 2009, at 3:35 O'clock P.M., and duly recorded the 17th day of September, 2009, at 3:35 O'clock P.M., in said County in Volume 67, Page 3244-325, Map Records.

Witness my hand and seal of the County Court, in and for said County, at office in Corpus Christi, Texas, the day and year last written.

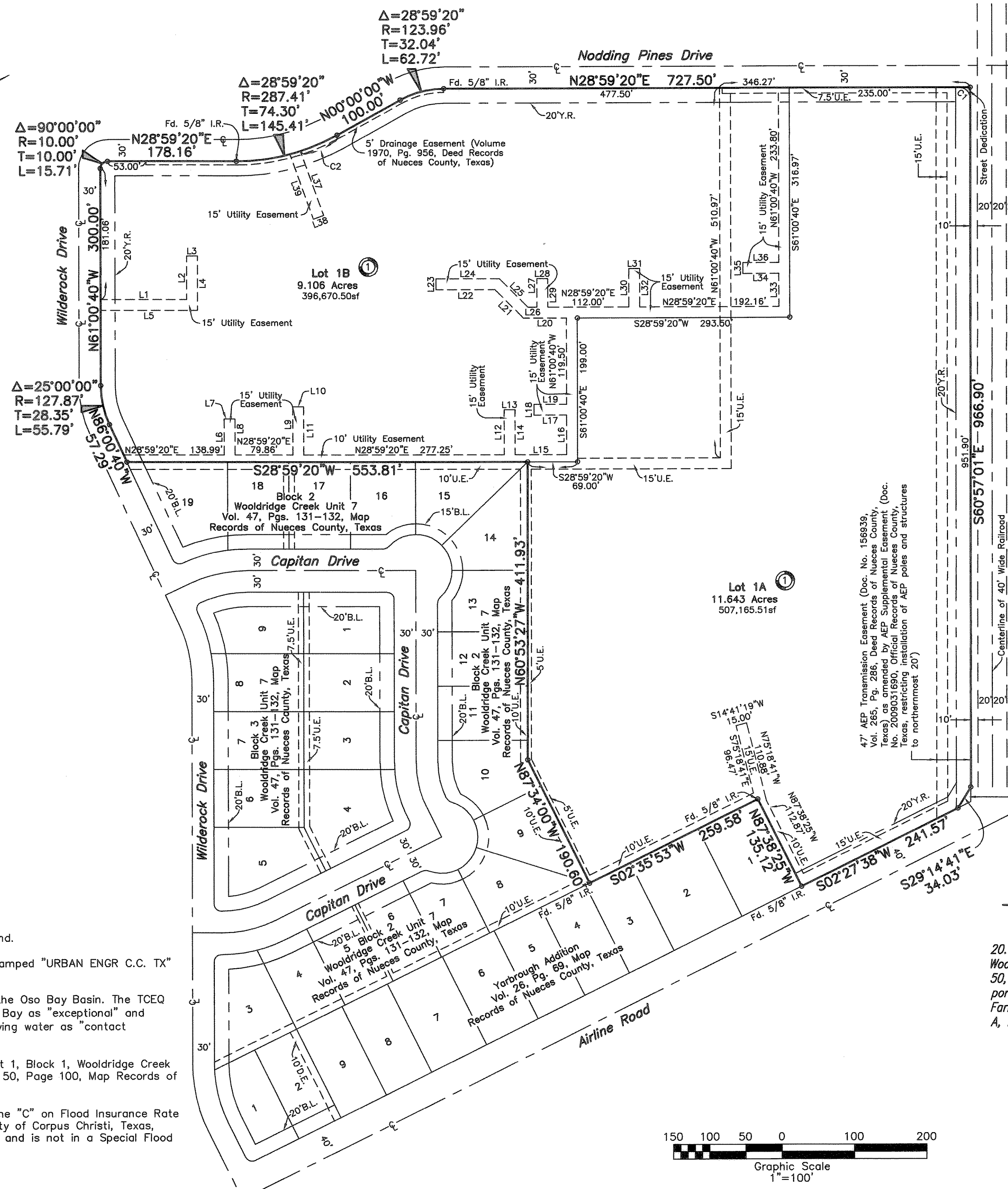
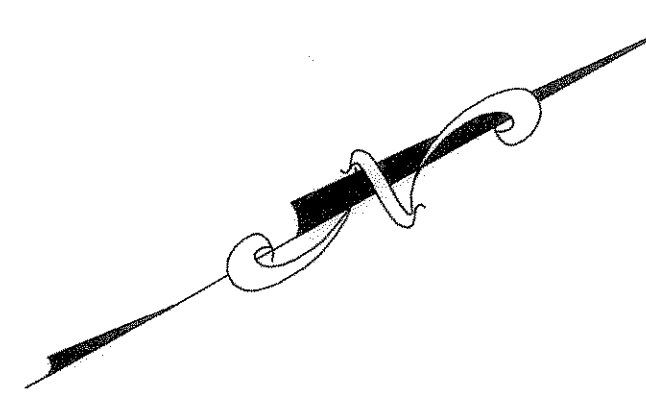
No. 2009037869
Filed for Record
at 3:35 O'clock P.M.
September 17, 2009

Diana T. Barrera
Diana T. Barrera, County Clerk
Nueces County, Texas
By: Sylvia Serrano
Sylvia Serrano, Deputy



URBAN ENGINEERING
2725 SWANWATER, CORPUS CHRISTI, TEXAS 78404
(361)854-3101 Fax: (361)854-8001

DATE: March 13, 2009
SCALE: 1"=100'
JOB NO.: 07550.A9.00
SHEET: 1 of 2
DRAWN BY: XG



CURVE	DELTA ANGLE	RADIUS	TANGENT	ARC LENGTH
C1	90°03'39"	15.00'	15.02'	23.58'
C2	10°59'50"	287.41'	27.67'	55.17'

LINE	BEARING	DISTANCE
L1	N28°59'20"E	119.00'
L2	N61°00'40"W	60.05'
L3	N28°59'20"E	15.00'
L4	S61°00'40"E	75.05'
L5	S28°59'20"W	134.00'
L6	N61°00'40"W	49.45'
L7	N28°59'20"E	15.00'
L8	N61°00'40"E	49.45'
L9	N61°00'40"W	66.65'
L10	N28°59'20"E	15.00'
L11	S61°00'40"E	66.65'
L12	N61°00'40"W	62.23'
L13	N28°59'20"E	15.00'
L14	S61°00'40"E	62.23'
L15	N28°59'20"E	71.37'
L16	N61°00'40"W	54.50'
L17	S28°59'20"W	45.00'
L18	N61°00'40"W	15.00'
L19	N28°59'20"E	45.00'
L20	S28°59'20"W	59.41'
L21	S73°59'20"W	55.54'
L22	S28°59'20"W	81.31'
L23	N61°00'40"W	15.00'
L24	N28°59'20"E	87.53'
L25	N73°59'20"E	55.54'
L26	N28°59'20"E	12.53'
L27	N61°00'40"W	39.40'
L28	N28°59'20"E	15.00'
L29	S61°00'40"E	39.40'
L30	N61°00'40"W	53.00'
L31	N28°59'20"E	15.00'
L32	S61°00'40"E	53.00'
L33	N61°00'40"W	45.67'
L34	S28°59'20"W	49.72'
L35	N61°00'40"W	15.00'
L36	N28°59'20"E	49.72'
L37	S80°41'59"E	94.40'
L38	S09°18'01"W	15.00'
L39	N80°41'59"W	95.24'

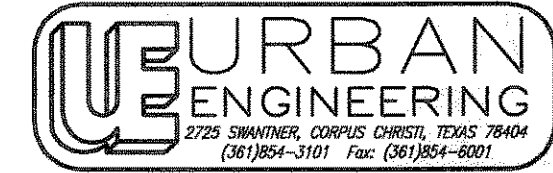
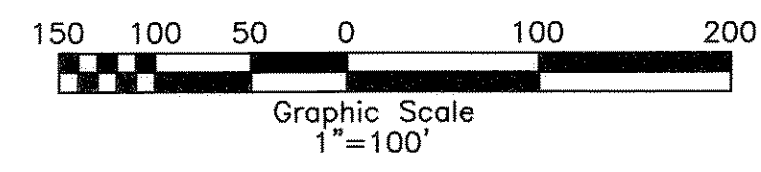
47' AEP Transmission Easement (Doc. No. 156639, Vol. 265, Pg. 286, Deed Records of Nueces County, Texas) as amended by AEP Supplemental Easement (Doc. No. 2009031890, Official Records of Nueces County, Texas, restricting installation of AEP poles and structures to northernmost 20')

178.90 Square Foot R.O.W. (Doc. No. 1997003227, O.R.N.C.T.)

Plat of
Wooldridge Creek Unit 8
Block 1, Lots 1A and 1B

20.750 acres of land being a portion of Lot 1, Block 1, Wooldridge Creek Unit 8, a map of which is recorded in Volume 50, Page 100, Map Records of Nueces County, Texas and a portion of Lots 6 and 7, Section 12, Flour Bluff and Encinal Farm and Garden Tracts, a map of which is recorded in Volume A, Pages 41-43, Map Records of Nueces County, Texas.

- Notes:
- 1.) Total platted area contains 20.750 acres of land.
 - 2.) Set 5/8 inch iron rods with red plastic cap stamped "URBAN ENGR C.C. TX" at all Lot corners, except where noted.
 - 3.) The receiving water for storm water runoff is the Oso Bay Basin. The TCEQ has classified the aquatic life use for the Oso Bay as "exceptional" and "oyster waters" and also categorized the receiving water as "contact recreation" use.
 - 4.) Bearings are based on the recorded plat of Lot 1, Block 1, Wooldridge Creek Unit 8, a map of which is recorded in Volume 50, Page 100, Map Records of Nueces County, Texas.
 - 5.) By graphic plotting only, this property is in Zone "C" on Flood Insurance Rate Map, Community Panel No. 485464 0303 C, City of Corpus Christi, Texas, which bears an effective date of July 18, 1985 and is not in a Special Flood Hazard Area.



DATE: March 13, 2009
SCALE: 1"=100'
JOB NO.: 07550.A9.00
SHEET: 2 of 2
DRAWN BY: XG

VOL 67 Pg 325